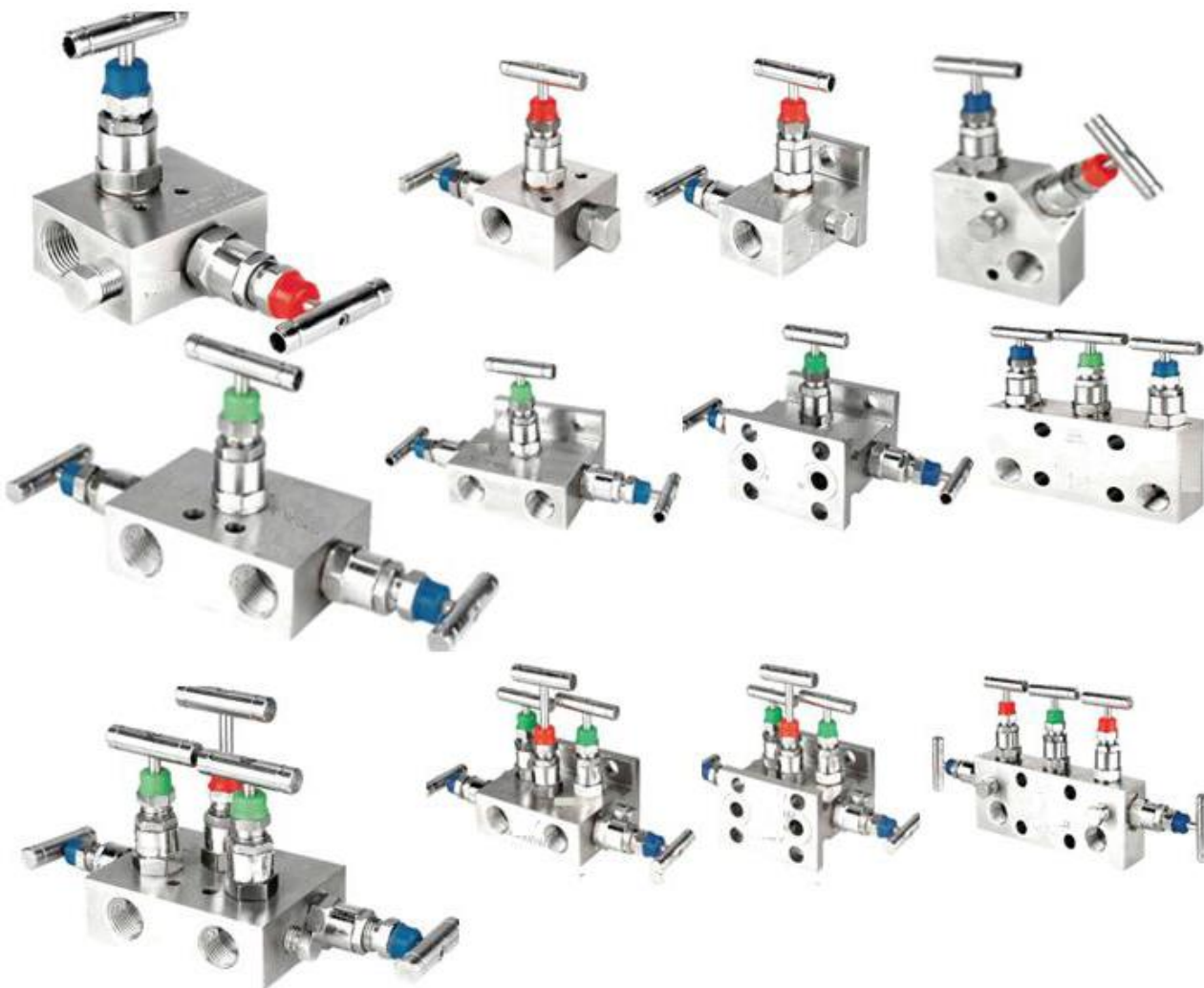




METALOK MANIFOLD VALVES

M
E
T
A
L
O
K

I
N
D
U
S
T
R
I
E
S



Dimensions are for reference only and subject to change without notice.

Warning for Your Safety

The system designer and user have the sole responsibility to select products suitable for their special application requirements to ensure the proper installation. Operation and maintenance of the product. Application details, material compatibility and product ratings should all be considered in the individual selection. Improper selection or use of products can cause property damage or personal injury. METALOK accepts no liability for any improper selection, installation, operation or maintenance.

METALOK INDUSTRIES

sales@metalokindustries.com



1



2



3

2 WAY MANIFOLD VALVES, R2,TYPE 1

2 WAY MANIFOLD VALVES, R2,TYPE 2

2 WAY MANIFOLD VALVES, R2,TYPE 3



4



5



6

2 WAY MANIFOLD VALVES, R2,TYPE 4

2 WAY MANIFOLD VALVES, R2,TYPE 5

2 WAY MANIFOLD VALVES, R2,TYPE 6



7



8



9

2 WAY MANIFOLD VALVES,T2, TYPE 7 DIRECT MOUNTING

2 WAY MANIFOLD VALVES, T2,TYPE 8 DIRECT MOUNTING

2 WAY MANIFOLD VALVES, R2,TYPE 9 REMOTE MOUNTING



10



11



12

3 WAY MANIFOLD VALVES, R3,TYPE 1

3 WAY MANIFOLD VALVES, R3,TYPE 2 DIRECT MOUNTING

3 WAY MANIFOLD VALVES,T3,TYPE 3 DIRECT MOUNTING



13



14



15

3 WAY MANIFOLD VALVES,H3, TYPE 4 DIRECT MOUNTING

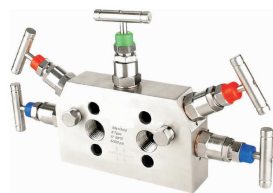
5 WAY MANIFOLD VALVES, R5,TYPE 1

5 WAY MANIFOLD VALVES,R5,TYPE 2 DIRECT MOUNTING

Dimensions are for reference only and subject to change without notice.

Warning for Your Safety

The system designer and user have the sole responsibility to select products suitable for their special application requirements to ensure the proper installation. Operation and maintenance of the product. Application details, material compatibility and product ratings should all be considered in the individual selection. Improper selection or use of products can cause property damage or personal injury. METALOK accepts no liability for any improper selection, installation, operation or maintenance.



16

**5 WAY MANIFOLD VALVES,R5,TYPE 3
DIRECT MOUNTING**



17

**5 WAY MANIFOLD VALVES,R5,
TYPE 4 COPLANAR MOUNTING**



18

**5 WAY MANIFOLD VALVES,T5,TYPE 5
DIRECT MOUNTING**



19

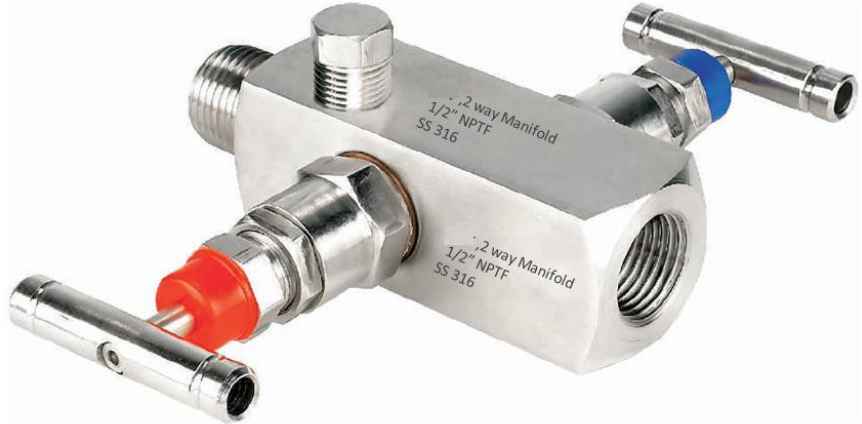
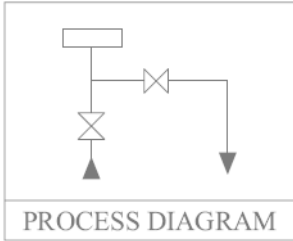
**5 WAY MANIFOLD VALVES,
H5,TYPE 6 DIRECT MOUNTING**

Dimensions are for reference only and subject to change without notice.

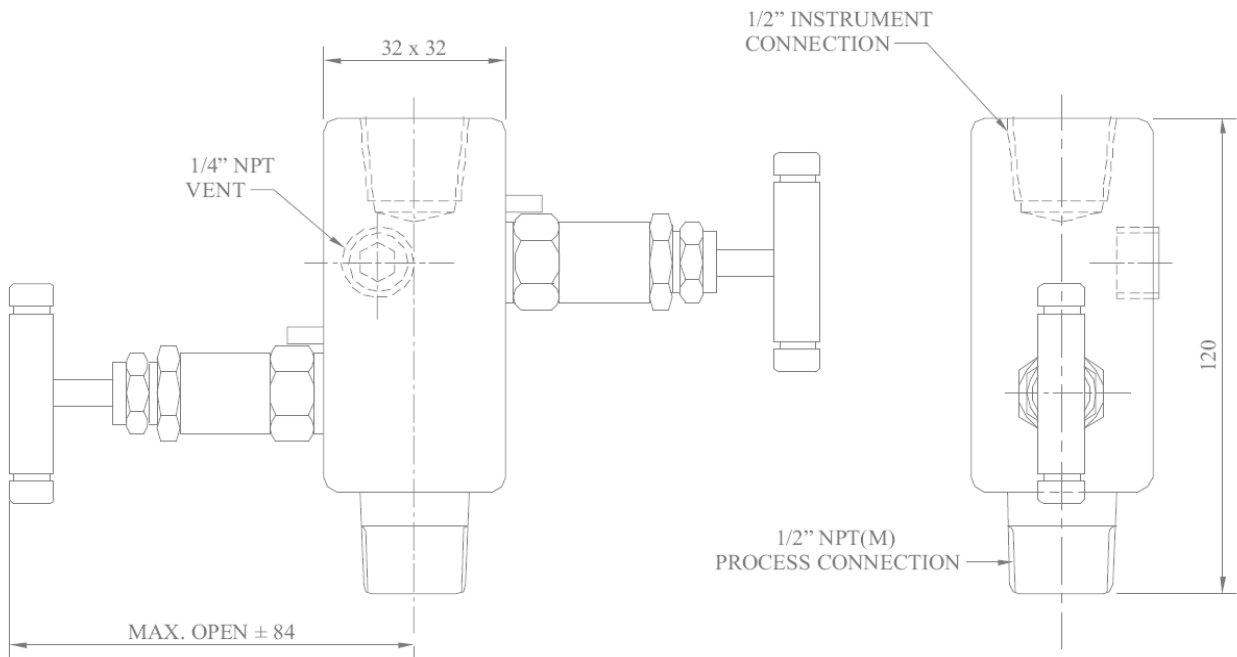
Warning for Your Safety

The system designer and user have the sole responsibility to select products suitable for their special application requirements to ensure the proper installation. Operation and maintenance of the product. Application details, material compatibility and product ratings should all be considered in the individual selection. Improper selection or use of products can cause property damage or personal injury. METALOK accepts no liability for any improper selection, installation, operation or maintenance.

2 WAY MANIFOLD VALVES,R2,TYPE 1



Orifice : 4 mm
 Approximate Weight : 1.0 kg.
 Pressure : up to 6000 psi.
 Temperature: up to 400 c
 All dimension in Millimeter

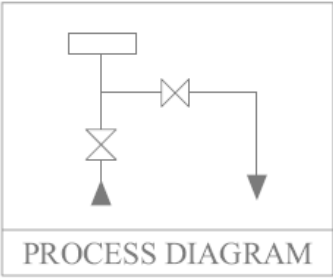


Dimensions are for reference only and subject to change without notice.

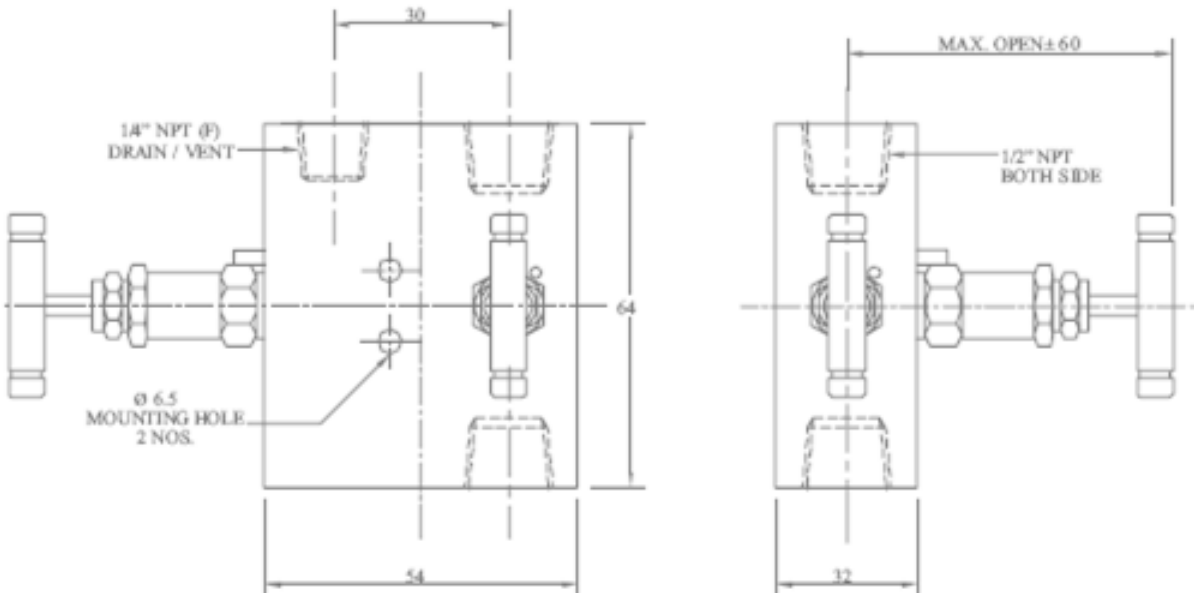
Warning for Your Safety

The system designer and user have the sole responsibility to select products suitable for their special application requirements to ensure the proper installation. Operation and maintenance of the product. Application details, material compatibility and product ratings should all be considered in the individual selection. Improper selection or use of products can cause property damage or personal injury. METALOK accepts no liability for any improper selection, installation, operation or maintenance.

2 WAY MANIFOLD VALVES,R2,TYPE 2



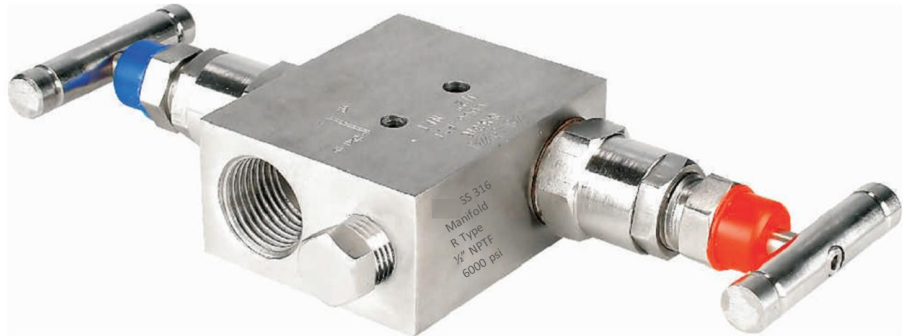
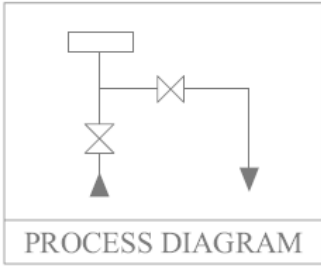
Orifice : 4 mm
Approximate Weight : 1.0 kg.
Pressure : up to 6000 psi.
Temperature: up to 400 c
All dimension in Millimeter



Dimensions are for reference only and subject to change without notice.

Warning for Your Safety

The system designer and user have the sole responsibility to select products suitable for their special application requirements to ensure the proper installation. Operation and maintenance of the product. Application details, material compatibility and product ratings should all be considered in the individual selection. Improper selection or use of products can cause property damage or personal injury. METALOK accepts no liability for any improper selection, installation, operation or maintenance.



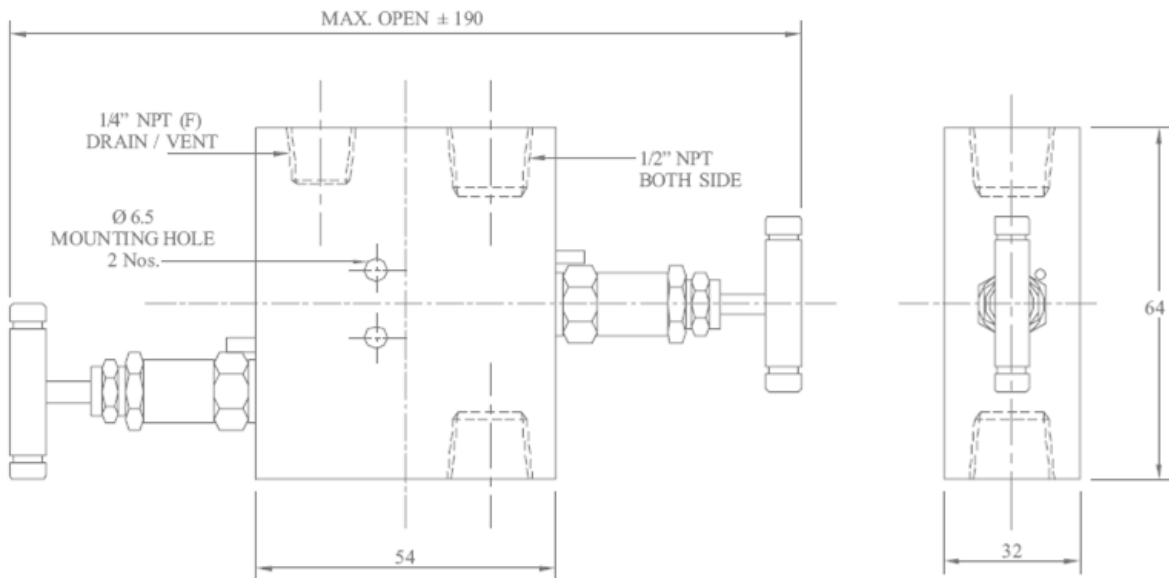
Orifice : 4 mm

Approximate Weight : 1.0 kg.

Pressure : up to 6000 psi.

Temperature: up to 400 c

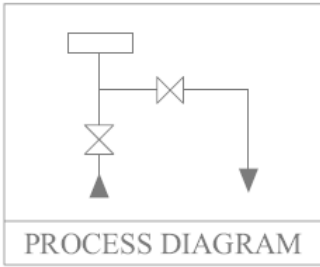
All dimension in Millimeter



Dimensions are for reference only and subject to change without notice.

Warning for Your Safety

The system designer and user have the sole responsibility to select products suitable for their special application requirements to ensure the proper installation. Operation and maintenance of the product. Application details, material compatibility and product ratings should all be considered in the individual selection. Improper selection or use of products can cause property damage or personal injury. METALOK accepts no liability for any improper selection, installation, operation or maintenance.



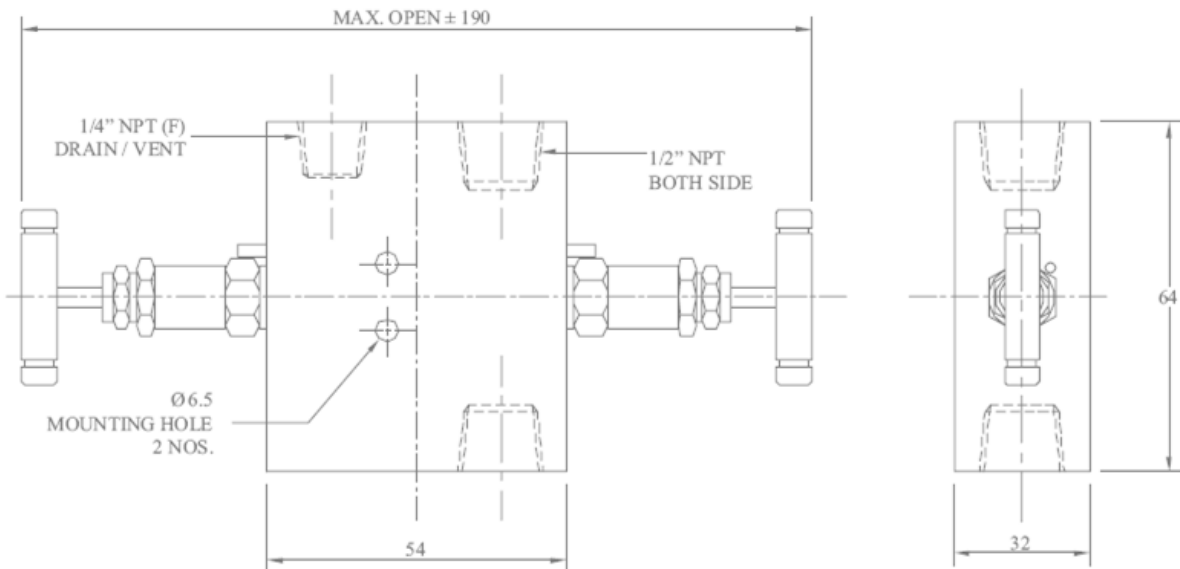
Orifice : 4 mm

Approximate Weight : 1.0 kg.

Pressure : up to 6000 psi.

Temperature: up to 400 c

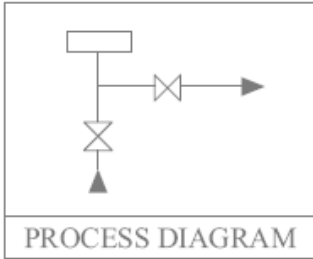
All dimension in Millimeter



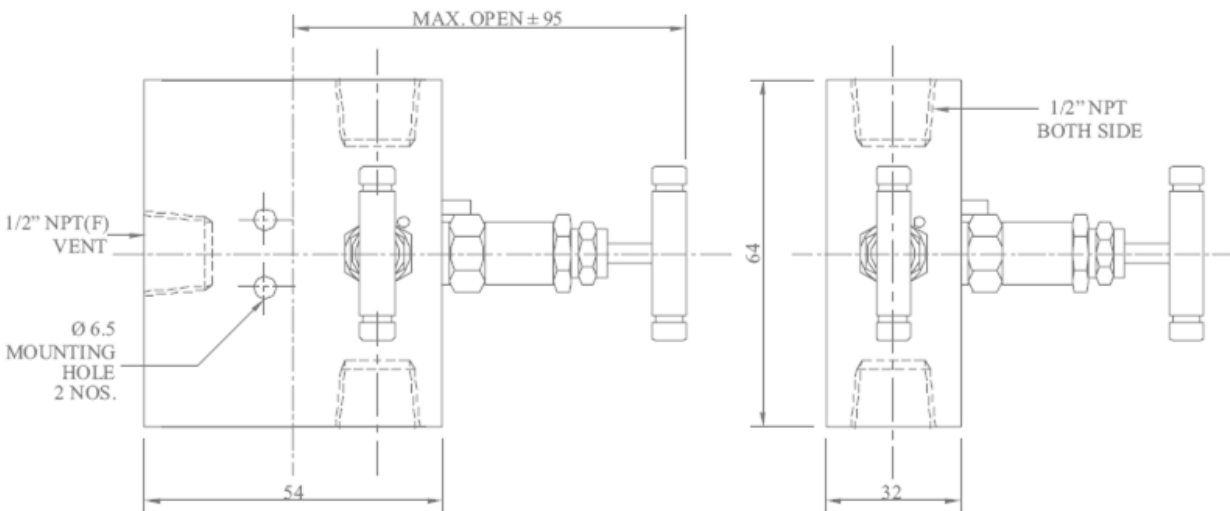
Dimensions are for reference only and subject to change without notice.

Warning for Your Safety

The system designer and user have the sole responsibility to select products suitable for their special application requirements to ensure the proper installation. Operation and maintenance of the product. Application details, material compatibility and product ratings should all be considered in the individual selection. Improper selection or use of products can cause property damage or personal injury. METALOK accepts no liability for any improper selection, installation, operation or maintenance.



Orifice : 4 mm
 Approximate Weight : 1.0 kg.
 Pressure : up to 6000 psi.
 Temperature: up to 400 c
 All dimension in Millimeter

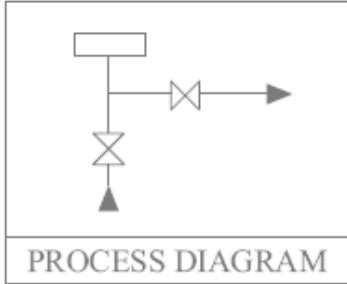


Dimensions are for reference only and subject to change without notice.

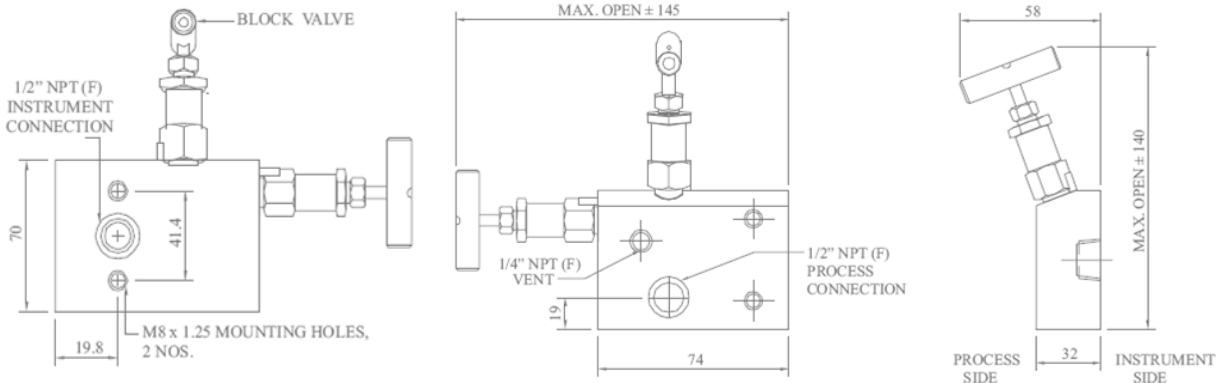
Warning for Your Safety

The system designer and user have the sole responsibility to select products suitable for their special application requirements to ensure the proper installation. Operation and maintenance of the product. Application details, material compatibility and product ratings should all be considered in the individual selection. Improper selection or use of products can cause property damage or personal injury. METALOK accepts no liability for any improper selection, installation, operation or maintenance.

2 WAY MANIFOLD VALVES,R2,TYPE 6



Orifice : 4 mm
 Approximate Weight : 1.2 kg.
 Pressure : up to 6000 psi.
 Temperature: up to 400 c
 All dimension in Millimeter

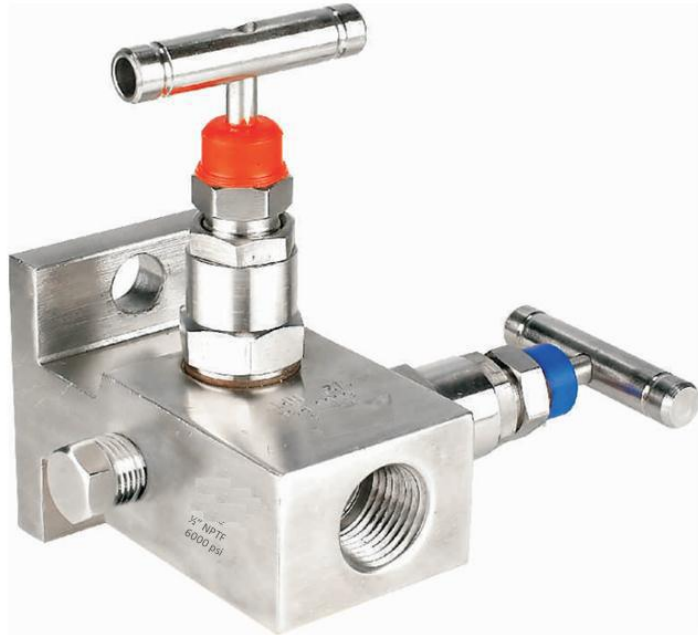
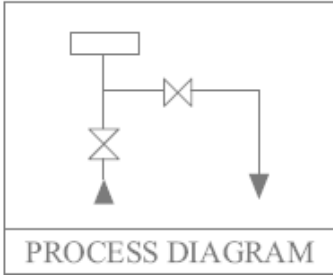


Dimensions are for reference only and subject to change without notice.

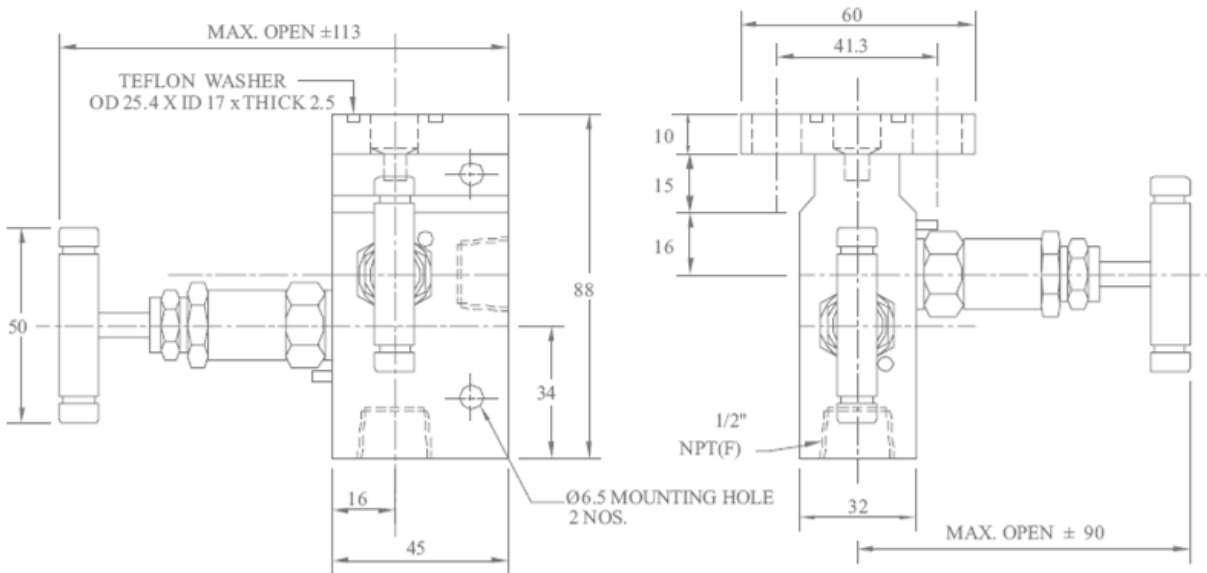
Warning for Your Safety

The system designer and user have the sole responsibility to select products suitable for their special application requirements to ensure the proper installation. Operation and maintenance of the product. Application details, material compatibility and product ratings should all be considered in the individual selection. Improper selection or use of products can cause property damage or personal injury. METALOK accepts no liability for any improper selection, installation, operation or maintenance.

**2 WAY MANIFOLD VALVES,T2,TYPE 7
DIRECT MOUNTING**



Orifice : 4 mm
 Approximate Weight : 1.2 kg.
 Pressure : up to 6000 psi.
 Temperature: up to 400 c
 All dimension in Millimeter



Dimensions are for reference only and subject to change without notice.

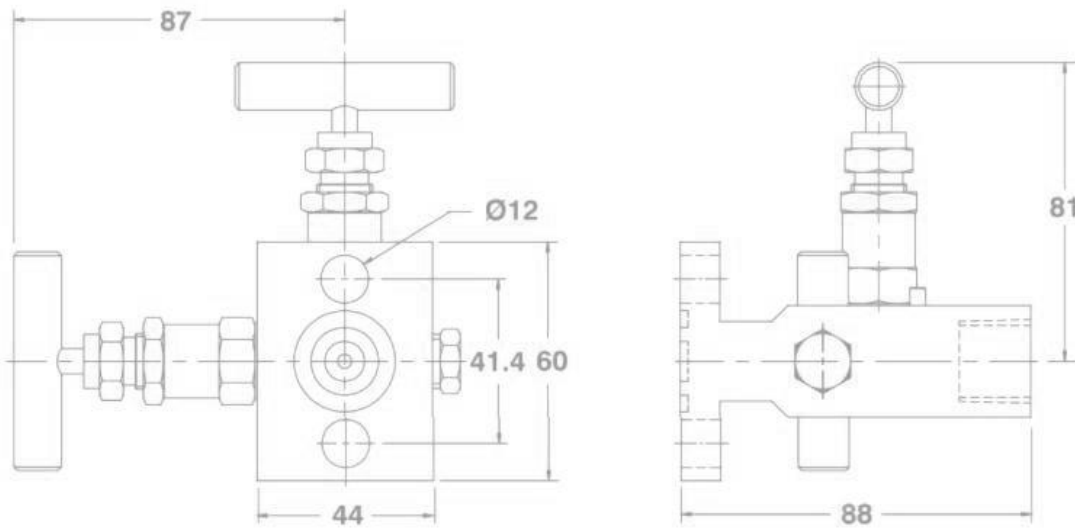
Warning for Your Safety

The system designer and user have the sole responsibility to select products suitable for their special application requirements to ensure the proper installation. Operation and maintenance of the product. Application details, material compatibility and product ratings should all be considered in the individual selection. Improper selection or use of products can cause property damage or personal injury. METALOK accepts no liability for any improper selection, installation, operation or maintenance.

**2 WAY MANIFOLD VALVES,T2,TYPE 8
DIRECT MOUNTING**



Orifice : 4 mm
 Approximate Weight : 1.5 kg.
 Pressure : up to 6000 psi.
 Temperature: up to 400 c
 All dimension in Millimeter



Dimensions are for reference only and subject to change without notice.

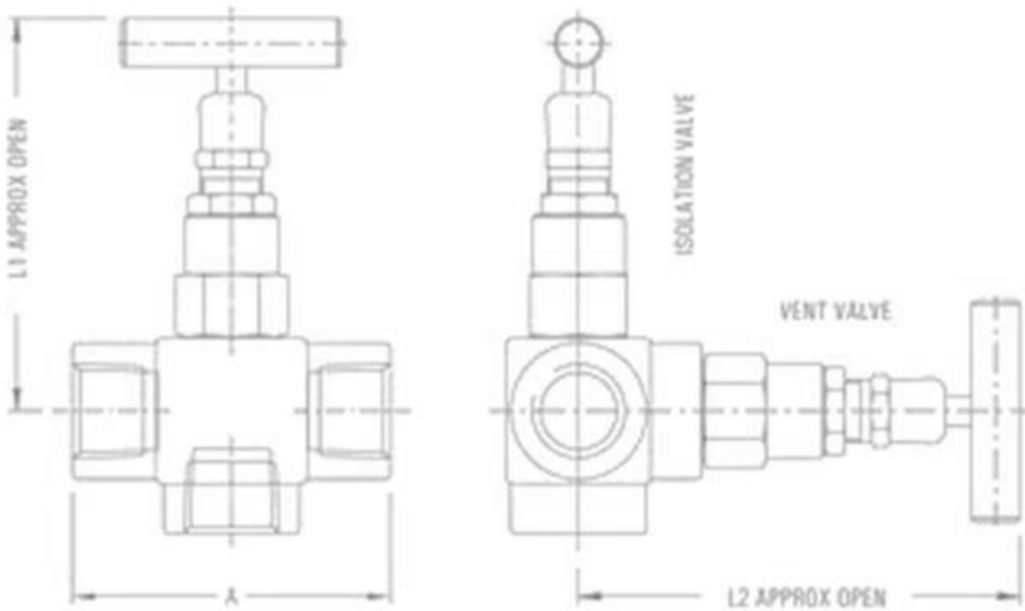
Warning for Your Safety

The system designer and user have the sole responsibility to select products suitable for their special application requirements to ensure the proper installation. Operation and maintenance of the product. Application details, material compatibility and product ratings should all be considered in the individual selection. Improper selection or use of products can cause property damage or personal injury. METALOK accepts no liability for any improper selection, installation, operation or maintenance.

2 WAY MANIFOLD VALVES,R2,TYPE 9 REMOTE MOUNTING



Orifice : 4 mm
Approximate Weight : 1.2 kg.
Pressure : up to 6000 psi.
Temperature: up to 400 c
All dimension in Millimeter

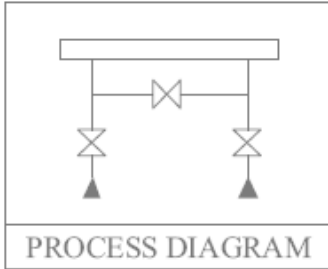


Dimensions are for reference only and subject to change without notice.

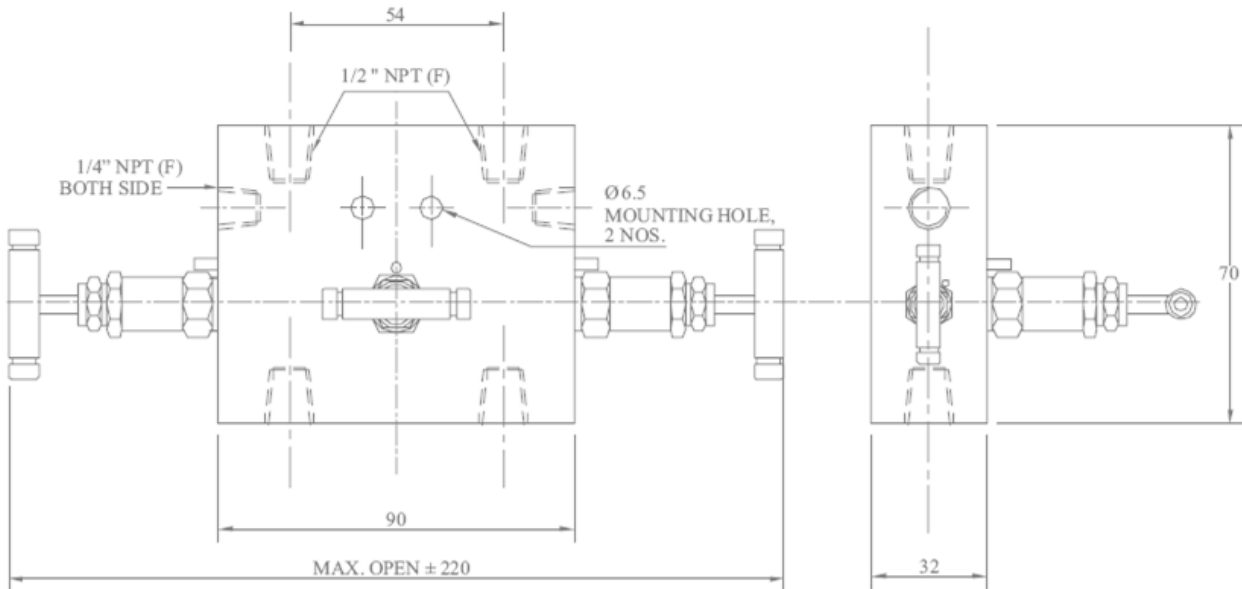
Warning for Your Safety

The system designer and user have the sole responsibility to select products suitable for their special application requirements to ensure the proper installation. Operation and maintenance of the product. Application details, material compatibility and product ratings should all be considered in the individual selection. Improper selection or use of products can cause property damage or personal injury. METALOK accepts no liability for any improper selection, installation, operation or maintenance.

3 WAY MANIFOLD VALVES, R3, TYPE 1



Orifice : 4 mm
 Approximate Weight : 1.5 kg.
 Pressure : up to 6000 psi.
 Temperature: up to 400 c
 All dimension in Millimeter



Dimensions are for reference only and subject to change without notice.

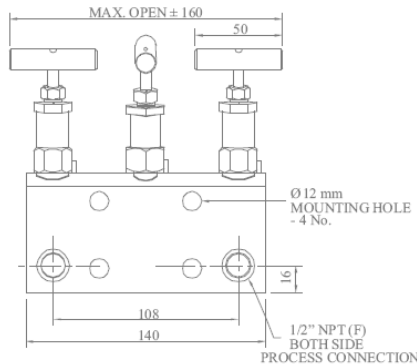
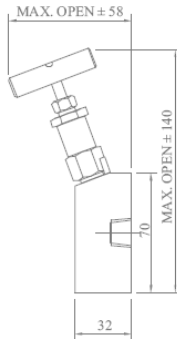
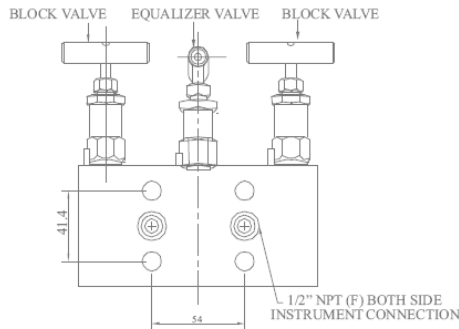
Warning for Your Safety

The system designer and user have the sole responsibility to select products suitable for their special application requirements to ensure the proper installation. Operation and maintenance of the product. Application details, material compatibility and product ratings should all be considered in the individual selection. Improper selection or use of products can cause property damage or personal injury. METALOK accepts no liability for any improper selection, installation, operation or maintenance.

**3 WAY MANIFOLD VALVES,R3,TYPE 2
DIRECT MOUNTING**



Orifice : 4 mm
 Approximate Weight : 1.5 kg.
 Pressure : up to 6000 psi.
 Temperature: up to 400 c
 All dimension in Millimeter

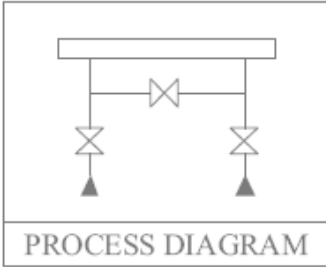


Dimensions are for reference only and subject to change without notice.

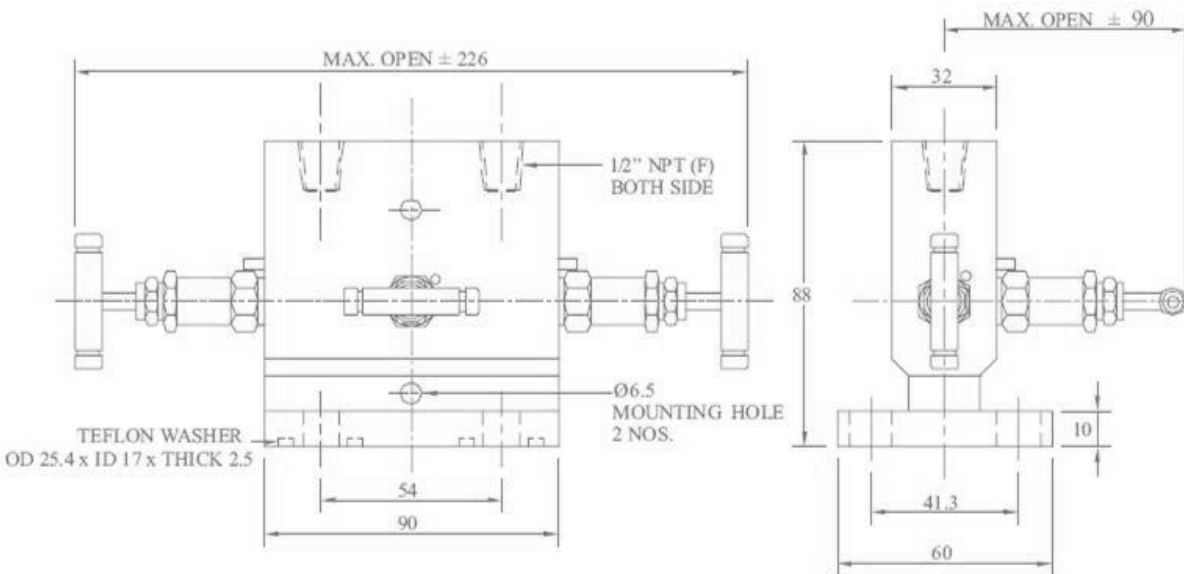
Warning for Your Safety

The system designer and user have the sole responsibility to select products suitable for their special application requirements to ensure the proper installation. Operation and maintenance of the product. Application details, material compatibility and product ratings should all be considered in the individual selection. Improper selection or use of products can cause property damage or personal injury. METALOK accepts no liability for any improper selection, installation, operation or maintenance.

3 WAY MANIFOLD VALVES, T3, TYPE 3 DIRECT MOUNTING



Orifice : 4 mm
 Approximate Weight : 1.5 kg.
 Pressure : up to 6000 psi.
 Temperature: up to 400 c
 All dimension in Millimeter

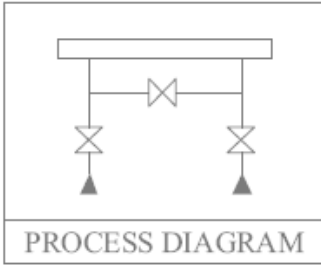


Dimensions are for reference only and subject to change without notice.

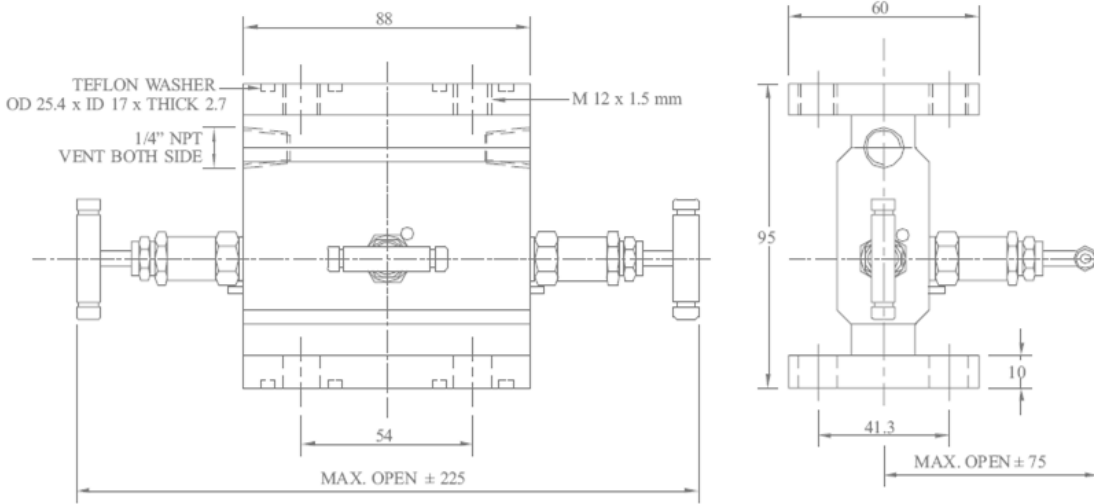
Warning for Your Safety

The system designer and user have the sole responsibility to select products suitable for their special application requirements to ensure the proper installation. Operation and maintenance of the product. Application details, material compatibility and product ratings should all be considered in the individual selection. Improper selection or use of products can cause property damage or personal injury. METALOK accepts no liability for any improper selection, installation, operation or maintenance.

3 WAY MANIFOLD VALVES, H3, TYPE 4 DIRECT MOUNTING



Orifice : 4 mm
 Approximate Weight : 2.6 kg.
 Pressure : up to 6000 psi.
 Temperature: up to 400 c
 All dimension in Millimeter

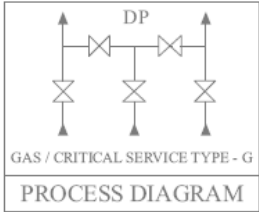
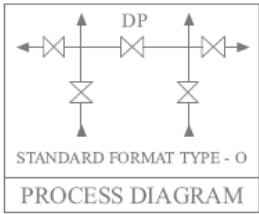


Dimensions are for reference only and subject to change without notice.

Warning for Your Safety

The system designer and user have the sole responsibility to select products suitable for their special application requirements to ensure the proper installation. Operation and maintenance of the product. Application details, material compatibility and product ratings should all be considered in the individual selection. Improper selection or use of products can cause property damage or personal injury. METALOK accepts no liability for any improper selection, installation, operation or maintenance.

5 WAY MANIFOLD VALVES, R5, TYPE 1



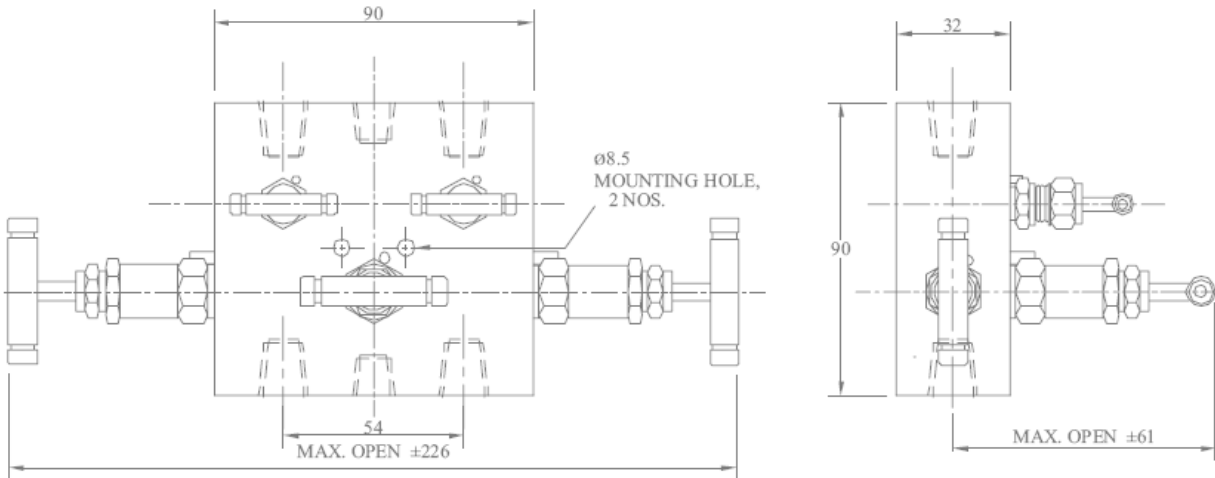
Orifice : 4 mm

Approximate Weight : 2.2 kg.

Pressure : up to 6000 psi.

Temperature: up to 400 c

All dimension in Millimeter

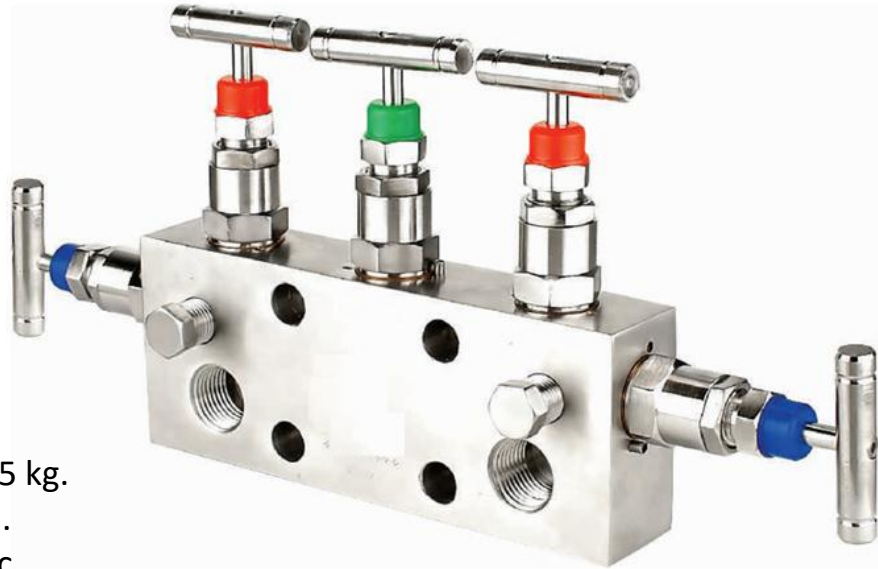
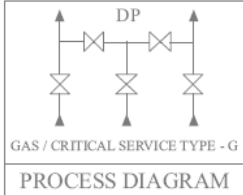
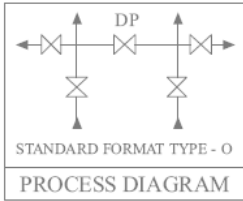


Dimensions are for reference only and subject to change without notice.

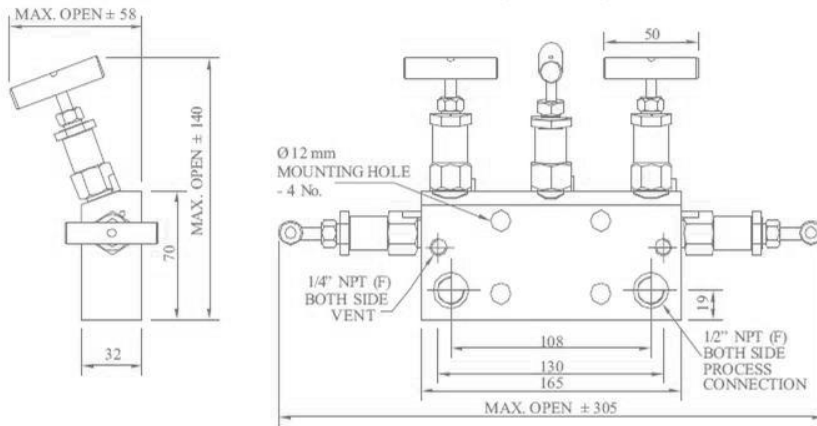
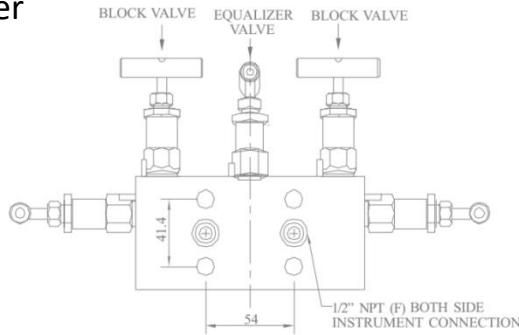
Warning for Your Safety

The system designer and user have the sole responsibility to select products suitable for their special application requirements to ensure the proper installation. Operation and maintenance of the product. Application details, material compatibility and product ratings should all be considered in the individual selection. Improper selection or use of products can cause property damage or personal injury. METALOK accepts no liability for any improper selection, installation, operation or maintenance.

5 WAY MANIFOLD VALVES, R5, TYPE 2 DIRECT MOUNTING



Orifice : 4 mm
 Approximate Weight : 1.5 kg.
 Pressure : up to 6000 psi.
 Temperature: up to 400 c
 All dimension in Millimeter

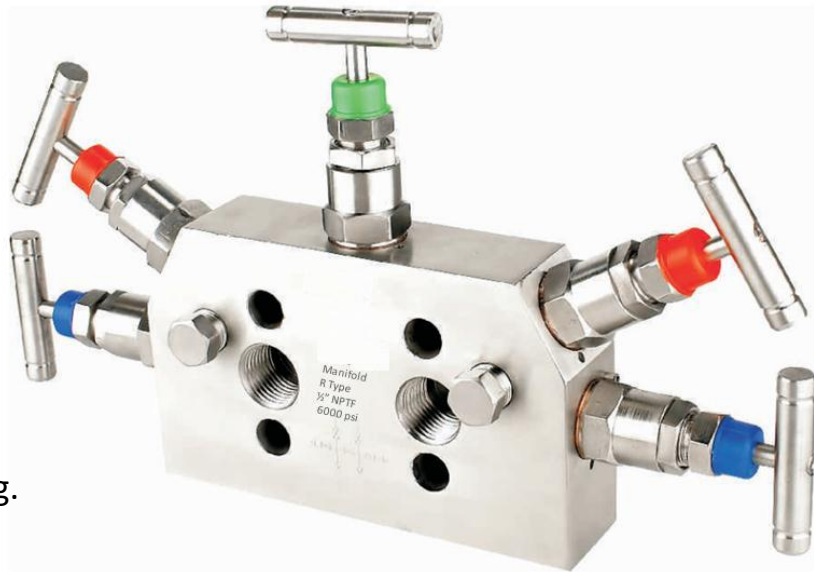
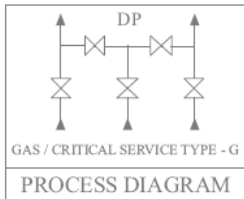
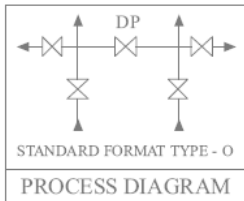


Dimensions are for reference only and subject to change without notice.

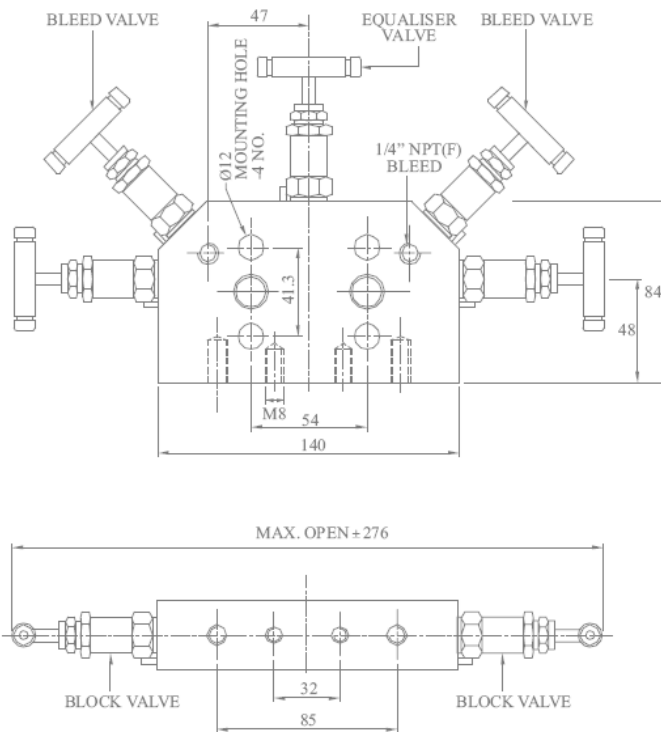
Warning for Your Safety

The system designer and user have the sole responsibility to select products suitable for their special application requirements to ensure the proper installation. Operation and maintenance of the product. Application details, material compatibility and product ratings should all be considered in the individual selection. Improper selection or use of products can cause property damage or personal injury. METALOK accepts no liability for any improper selection, installation, operation or maintenance.

5 WAY MANIFOLD VALVES, R5, TYPE 3 DIRECT MOUNTING



Orifice : 4 mm
 Approximate Weight : 1.5 kg.
 Pressure : up to 6000 psi.
 Temperature: up to 400 c
 All dimension in Millimeter

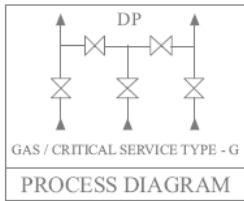
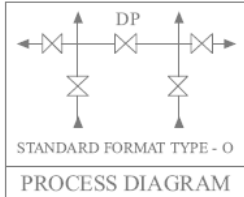


Dimensions are for reference only and subject to change without notice.

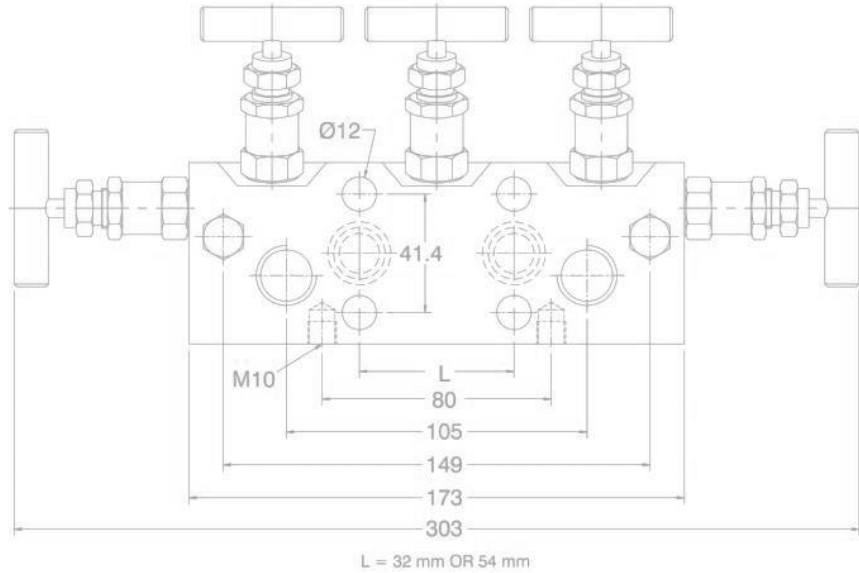
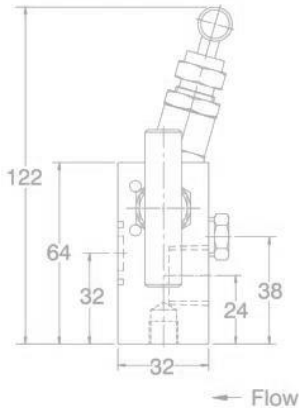
Warning for Your Safety

The system designer and user have the sole responsibility to select products suitable for their special application requirements to ensure the proper installation. Operation and maintenance of the product. Application details, material compatibility and product ratings should all be considered in the individual selection. Improper selection or use of products can cause property damage or personal injury. METALOK accepts no liability for any improper selection, installation, operation or maintenance.

5 WAY MANIFOLD VALVES, R5, TYPE 4 COPLANAR MOUNTING



Orifice : 4 mm
 Approximate Weight : 1.5 kg.
 Pressure : up to 6000 psi.
 Temperature: up to 400 c
 All dimension in Millimeter



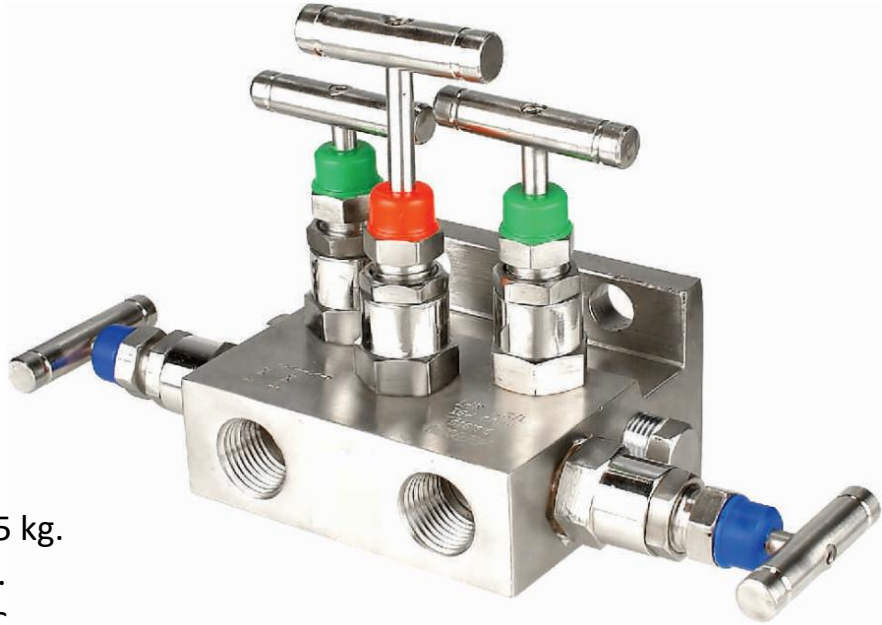
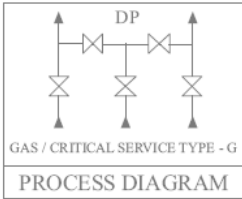
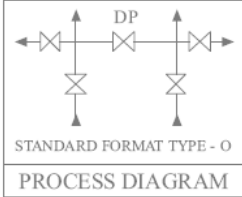
Dimensions are for reference only and subject to change without notice.

Warning for Your Safety

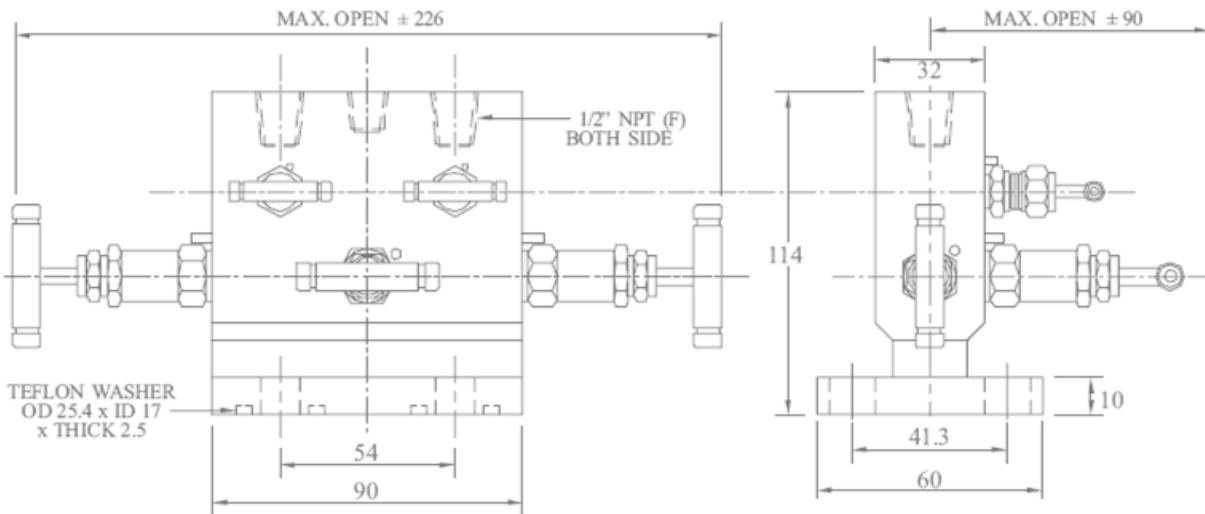
The system designer and user have the sole responsibility to select products suitable for their special application requirements to ensure the proper installation. Operation and maintenance of the product. Application details, material compatibility and product ratings should all be considered in the individual selection. Improper selection or use of products can cause property damage or personal injury. METALOK accepts no liability for any improper selection, installation, operation or maintenance.



5 WAY MANIFOLD VALVES, T5, TYPE 5 DIRECT MOUNTING



Orifice : 4 mm
 Approximate Weight : 2.5 kg.
 Pressure : up to 6000 psi.
 Temperature: up to 400 c
 All dimension in Millimeter

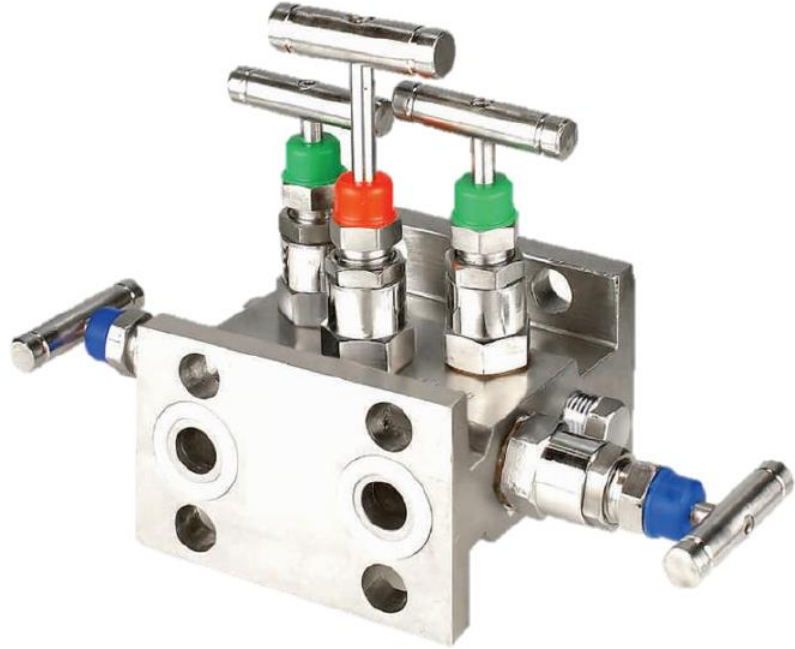
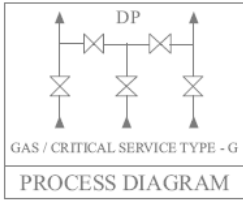
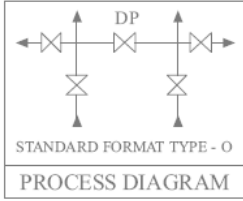


Dimensions are for reference only and subject to change without notice.

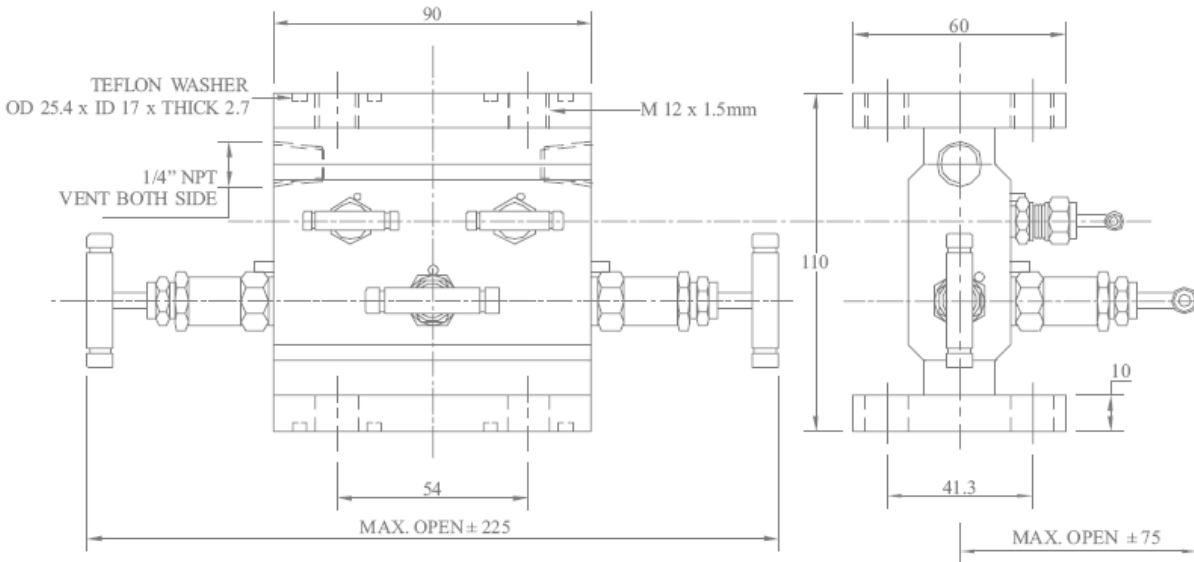
Warning for Your Safety

The system designer and user have the sole responsibility to select products suitable for their special application requirements to ensure the proper installation. Operation and maintenance of the product. Application details, material compatibility and product ratings should all be considered in the individual selection. Improper selection or use of products can cause property damage or personal injury. METALOK accepts no liability for any improper selection, installation, operation or maintenance.

5 WAY MANIFOLD VALVES, H5, TYPE 6 DIRECT MOUNTING



Orifice : 4 mm
 Approximate Weight : 3.2 kg.
 Pressure : up to 6000 psi.
 Temperature: up to 400 c
 All dimension in Millimeter



Dimensions are for reference only and subject to change without notice.

Warning for Your Safety

The system designer and user have the sole responsibility to select products suitable for their special application requirements to ensure the proper installation. Operation and maintenance of the product. Application details, material compatibility and product ratings should all be considered in the individual selection. Improper selection or use of products can cause property damage or personal injury. METALOK accepts no liability for any improper selection, installation, operation or maintenance.



Our Total customer satisfaction results in A True Partnership.



CUSTOMER BASE

More than three decades of experience, expertise and dedication ensures world class quality and excellent performance of METALOK products resulted in establishing worldwide customer base.

GRATITUDE

We at METALOK always appreciated and thankful to all our Valued Customers for undaunted support and faith reposed on us which motivates us to perform better all the time

EDGE

Our in-house Design, manufacturing and Testing facilities only emphasizes that METALOK Fitting and Valves are one of the Best, versatile, safe, compatible, easy for installation and operation in Instrumentation, Hydraulic and Industrial applications.

OUR GOAL

Our company's vision is to understand our customers requirements and meet them fully to their entire satisfaction by way of high quality, timely delivery, competitive price and prompt service.



www.metalokindustries.com



METALOK INDUSTRIES
(AN ISO 9001: 2008 Certified Company)

Regd Office & Unit : G-16 & 21, Nikisha Industrial Estate , Near Pandurang wadi, Western Express Highway, Mira Road East, Thane 401 107.



+91 22 28453235
+91 9869552950 (Hassan Shaikh)
+91 9892277161 (Rehan Shaikh)



metalokindustries@gmail.com
sales@metalokindustries.com
metalok@live.com



www.metalokindustries.com

METALOK INDUSTRIES

sales@metalokindustries.com



M
E
T
A
L
O
K

I
N
D
U
S
T
R
I
E
S