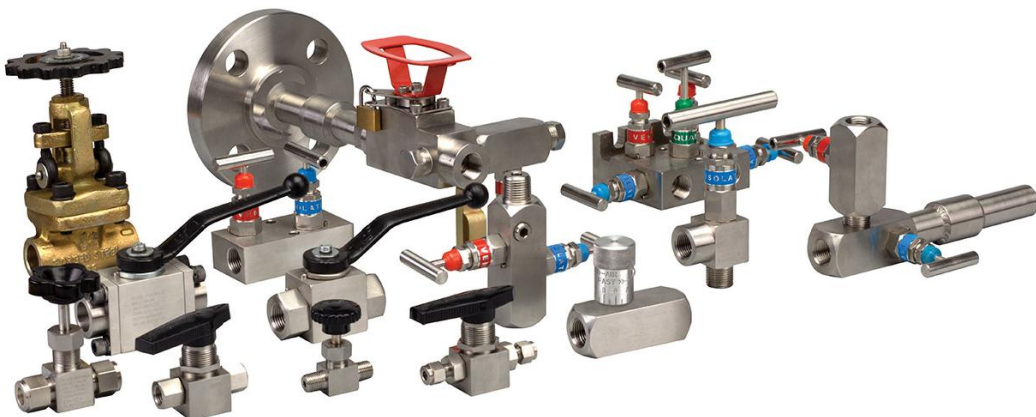




METALOK INDUSTRIES
(AN ISO 9001: 2008 Certified Company)

**Manufacturer of wide range of
Fittings and Valves
For Instrumentation, Hydraulic
& Precise Industrial Applications**



METALOK INDUSTRIES

sales@metalokindustries.com



M
E
T
A
L
O
K

I
N
D
U
S
T
R
I
E
S



M
E
T
A
L
O
K

I
N
D
U
S
T
R
I
E
S

METALOK HOSE FITTINGS



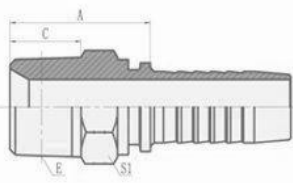
Dimensions are for reference only and subject to change without notice.

Warning for Your Safety

The system designer and user have the sole responsibility to select products suitable for their special application requirements to ensure the proper installation. Operation and maintenance of the product. Application details, material compatibility and product ratings should all be considered in the individual selection. Improper selection or use of products can cause property damage or personal injury. METALOK accepts no liability for any improper selection, installation, operation or maintenance.

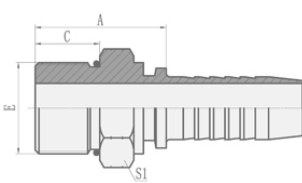
METALOK INDUSTRIES

sales@metalokindustries.com



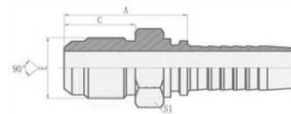
1

NPTF/SAE Male Hose Fittings



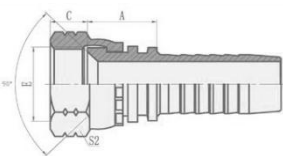
2

SAE O-RING Male Hose Fittings



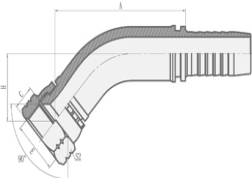
3

SAE MALE 90° CONE Hose Fittings



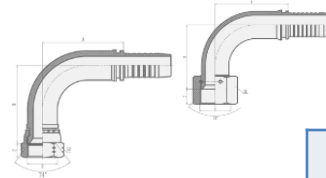
4

SAE FEMALE 90° CONE Hose Fittings



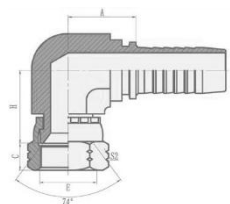
5

45° SAE FEMALE 90° CONE Hose Fittings



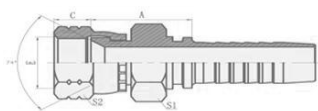
6

90 JIC Female 74 Cone Seat Hose Fittings



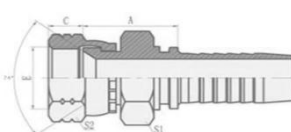
7

90 JIC Compact Female 74 Cone Hose Fittings



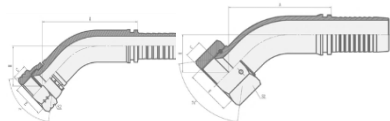
8

JIC Female 74 Cone Seat Double Hexagon- SAE Hose Fittings



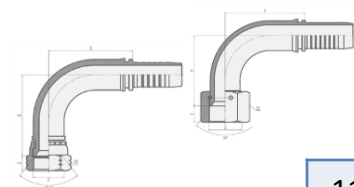
9

JIC Female 74 Cone Seat Double Hexagon - SAE Hose Fittings



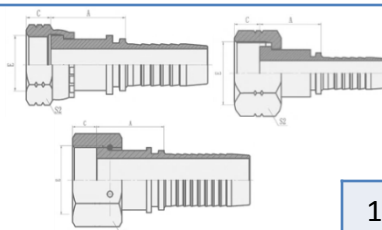
10

45 JIC Female 74 Cone- SAE Hose Fittings



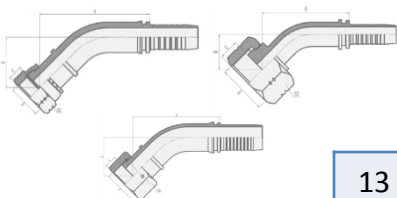
11

90 Female 74 Cone SEAT- SAE Hose Fittings



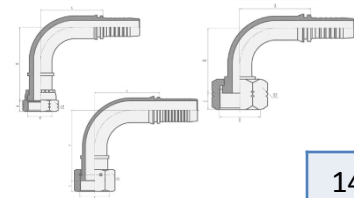
12

ORFS FEMALE FLAT SEAT- SAE Hose Fittings



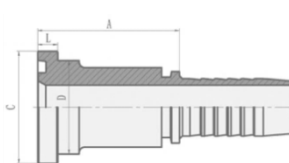
13

45 ORFS FEMALE FLAT SEAT- SAE Hose Fittings



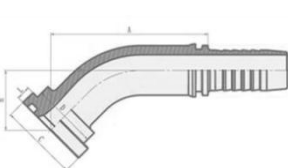
14

90 ORFS FEMALE FLAT SEAT- SAE Hose Fittings



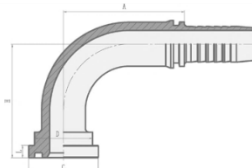
15

SAE Flange 3000 PSI Hose Fittings



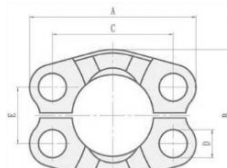
16

FSFTP 45 SAE FLANGE 3000 PSI Hose Fittings



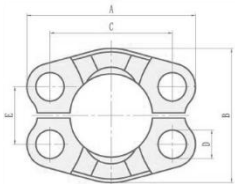
17

90° SAE Flange 3000 PSI Hose Fittings



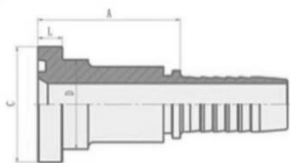
18

FL SAE SPLIT FLANGE CLAMPS 3000 PSI Hose Fittings



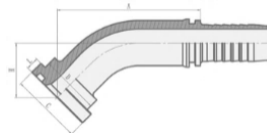
18

**FS SAE SPLIT FLANGE CLAMPS
6000 PSI Hose Fittings**



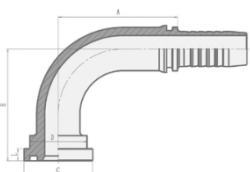
19

**SAE FLANGE 6000 PSI
Hose Fittings**



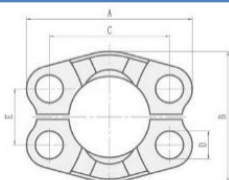
20

**45 SAE FLANGE 6000 PSI
Hose Fittings**



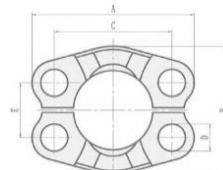
21

**90° SAE Flange 6000 PSI
Hose Fittings**



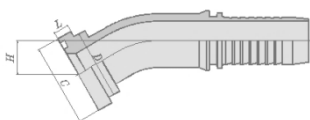
22

**FL SAE SPLIT FLANGE CLAMPS
3000 PSI Hose Fittings**



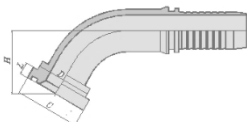
22

**FS SAE SPLIT FLANGE CLAMPS
6000 PSI Hose Fittings**



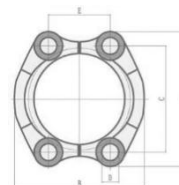
23

**TSFTP 30°SAE FLANGE 3000 PSI
Hose Fittings**



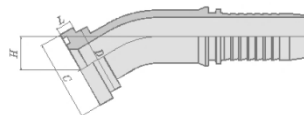
24

**60°SAE FLANGE 3000 PSI
Hose Fittings**



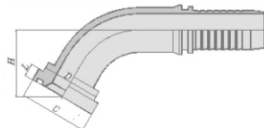
25

**FL-W FLANGE CLAMPS 3000 PSI
Hose Fittings**



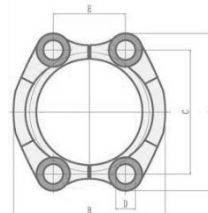
26

**TSFTP 30°SAE FLANGE 6000 PSI
Hose Fittings**



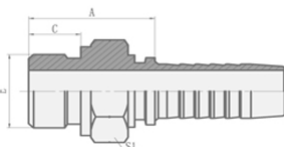
27

**SSFSP 60° SAE Flange 6000 PSI
Hose Fittings**



28

**FS-W FLANGE CLAMPS 6000 PSI
Hose Fittings**



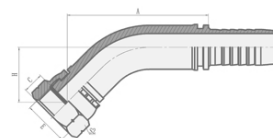
29

**BSP MALE O-RING SEAL
HYDRAULIC HOSE FITTINGS**



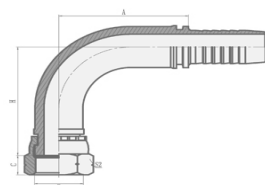
30

**BSP FEMALE FLAT SEAT
HYDRAULIC HOSE FITTINGS**



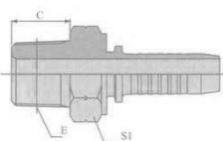
31

**45 BSP FEMALE FLAT SEAT
HYDRAULIC HOSE FITTINGS**



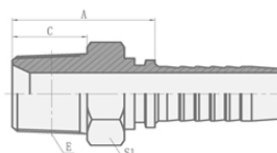
32

**90°BSP FEMALE FLAT SEAT
HYDRAULIC HOSE FITTINGS**



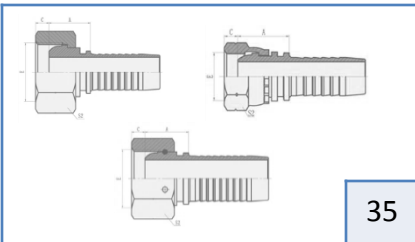
33

**BSPT MALE TAPERED
HYDRAULIC HOSE FITTINGS**



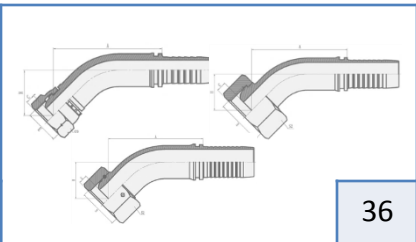
34

**BSPT MALE HYDRAULIC
HOSE FITTINGS**



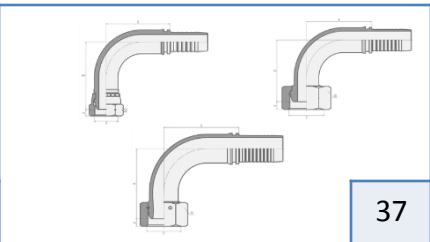
35

BSP FEMALE MULTISEAL HYDRAULIC HOSE FITTINGS



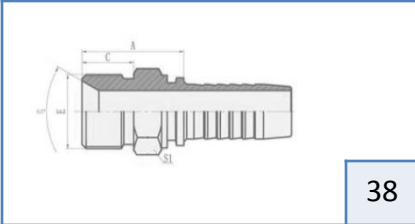
36

BSP FEMALE MULTISEAL HYDRAULIC HOSE FITTINGS



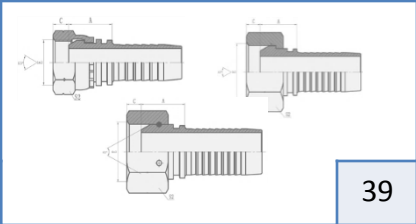
37

90°BSP FEMALE MULTISEAL HYDRAULIC HOSE FITTINGS



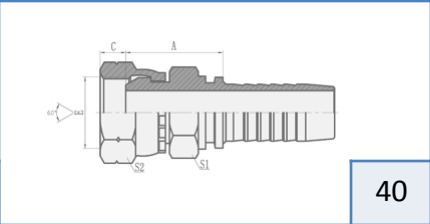
38

BSP MALE 60° CONE SEAT HYDRAULIC HOSE



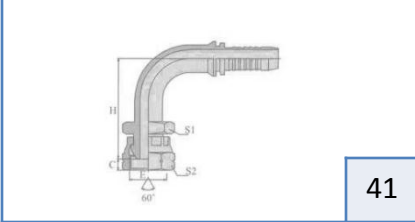
39

BSP FEMALE 60 CONE HYDRAULIC HOSE FITTINGS



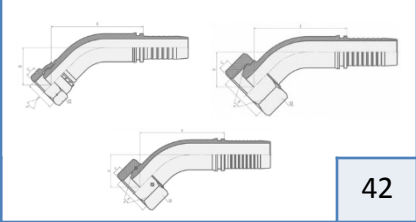
40

BSP FEMALE 60 CONE DOUBLE HEXAGON HYDRAULIC HOSE FITTINGS



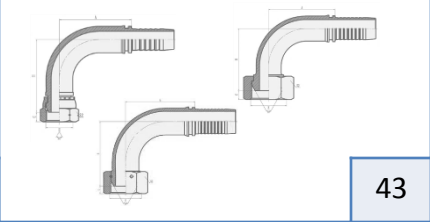
41

90°BSP FEMALE 60° CONE DOUBLE HEXAGON HYDRAULIC HOSE FITTINGS



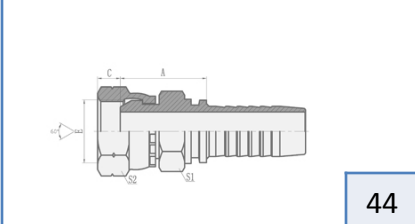
42

45°BSP FEMALE 60° CONE HYDRAULIC HOSE FITTINGS



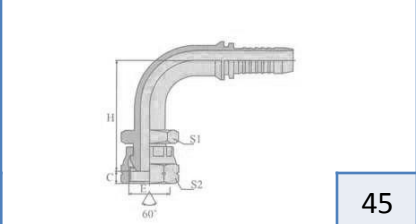
43

90 BSP FEMALE 60 CONE HYDRAULIC HOSE FITTINGS



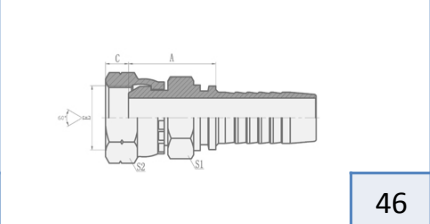
44

BSP FEMALE 60 CONE DOUBLE HEXAGON HYDRAULIC HOSE FITTINGS



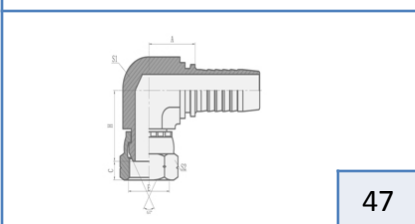
45

90° BSP FEMALE 60° Cone Double Hexagon Hydraulic Hose Fittings



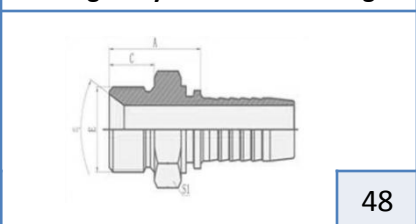
46

BSP FEMALE 60 CONE DOUBLE HEXAGON HYDRAULIC HOSE FITTINGS



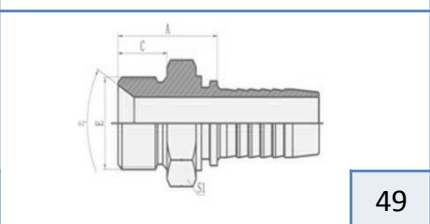
47

BSP FEMALE 60 CONE DOUBLE HEXAGON HYDRAULIC HOSE FITTINGS



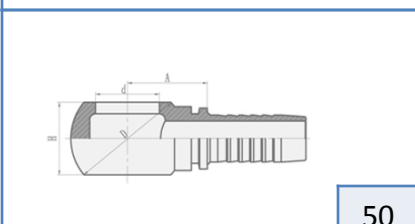
48

BSP MALE DOUBLE USE FOR 60 CONE SEAT HYDRDAULIC HOSE FITTINGS



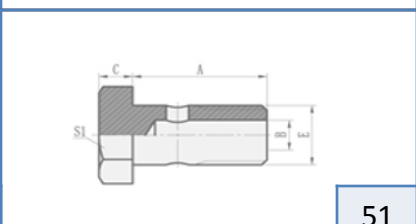
49

BSP MALE OUBLE USE FOR 60 CONE SEAT HYDRDAULIC HOSE FITTINGS



50

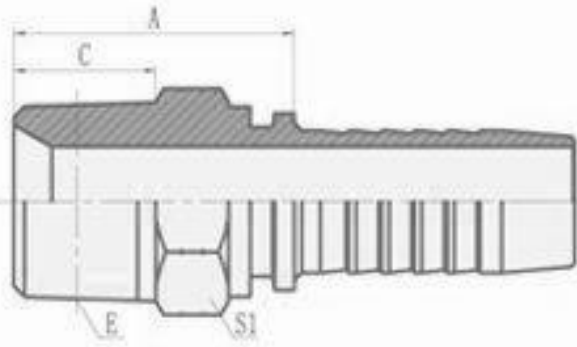
BSP BANJO HYDRAULIC HOSE FITTINGS



51

BSP Bolt Hydraulic Hose Fittings

NPTF/SAE Male Hose Fittings



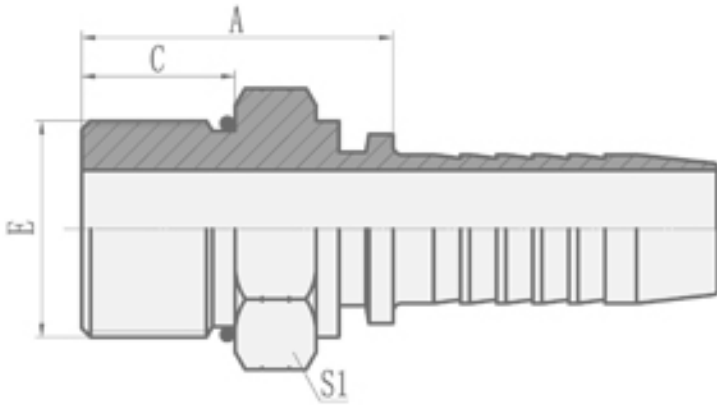
PART NO.	THREAD E	HOSE BORE		DIMENSIONS		
		DN	DASH	A	C	S1
MINSM 02-03	Z1/8"*27	5	3	22.5	10.5	12
MINSM-02-04	Z1/8"*27	6	4	22.5	10.5	12
MINSM-04-03	Z1/4"*18	5	3	22.5	15	17
MINSM-04-04	Z1/4"*18	6	4	28	15	17
MINSM-04-05	Z1/4"*18	8	5	28	15	17
MINSM-04-06	Z1/4"*18	10	6	27	15	17
MINSM-06-04	Z3/8"*18	6	4	28	16	19
MINSM-06-05	Z3/8"*18	8	5	28	16	19
MINSM-06-06	Z3/8"*18	10	6	30	16	19
MINSM-06-08	Z3/8"*18	12	8	30.5	16	19
MINSM-08-06	Z1/2"*14	10	6	34.5	19.5	22
MINSM-08-08	Z1/2"*14	12	8	34.5	19.5	22
MINSM-08-10	Z1/2"*14	16	10	36	19.5	22
MINSM-12-08	Z3/4"*14	12	8	37.5	19.5	27
MINSM-12-10	Z3/4"*14	16	10	38	19.5	27
MINSM-12-12	Z3/4"*14	20	12	38.5	19.5	27
MINSM-12-16	Z3/4"*14	25	16	39.5	19.5	32
MINSM-16-10	Z1"*11.5	16	10	45	25.5	36
MINSM-16-12	Z1"*11.5	20	12	45	25.5	36
MINSM-16-16	Z1"*11.5	25	16	44.5	25.5	36
MINSM-20-16	Z1.1/4"*11.5	25	16	49.5	26.5	46
MINSM-20-20	Z1.1/4"*11.5	32	20	49	26.5	46
MINSM-24-24	Z1.1/4"*11.5	40	24	51	27.5	50
MINSM-32-32	Z2"*11.5	50	32	55	27.5	65

Dimensions are for reference only and subject to change without notice.

Warning for Your Safety

The system designer and user have the sole responsibility to select products suitable for their special application requirements to ensure the proper installation. Operation and maintenance of the product. Application details, material compatibility and product ratings should all be considered in the individual selection. Improper selection or use of products can cause property damage or personal injury. METALOK accepts no liability for any improper selection, installation, operation or maintenance.

SAE O-RING Male Hose Fittings



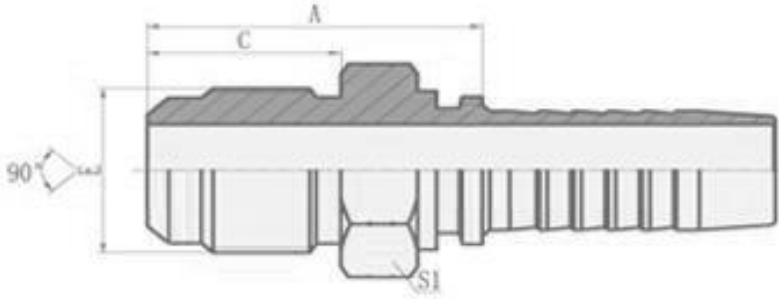
PART NO.	THREAD E	HOSE BORE		O RING	DIMENSIONS		
		DN	DASH		A	C	S1
MISOM-04-04	7/16"*20	6	4	O904	21.5	9.1	14
MISOM-05-04	1/2"*20	6	4	O905	21.5	9.1	17
MISOM-06-05	9/16"*18	8	5	O906	22.5	9.9	17
MISOM-06-06	9/16"*18	10	6	O906	22.5	9.9	17
MISOM-08-06	3/4"*16	10	6	O908	24.5	11.1	22
MISOM-08-08	3/4"*16	12	8	O908	25	11.1	22
MISOM-10-08	7/8"*14	12	8	O910	29.5	12.7	27
MISOM-10-10	7/8"*14	16	10	O910	30.5	12.7	27
MISOM-12-10	1.1/16"*12	16	10	O912	34	15.1	32
MISOM-12-12	1.1/16"*12	20	12	O912	34	15.1	32
MISOM-16-16	1.1/16"*12	25	16	O916	36	15.1	38

Dimensions are for reference only and subject to change without notice.

Warning for Your Safety

The system designer and user have the sole responsibility to select products suitable for their special application requirements to ensure the proper installation. Operation and maintenance of the product. Application details, material compatibility and product ratings should all be considered in the individual selection. Improper selection or use of products can cause property damage or personal injury. METALOK accepts no liability for any improper selection, installation, operation or maintenance.

SAE MALE 90° CONE Hose Fittings



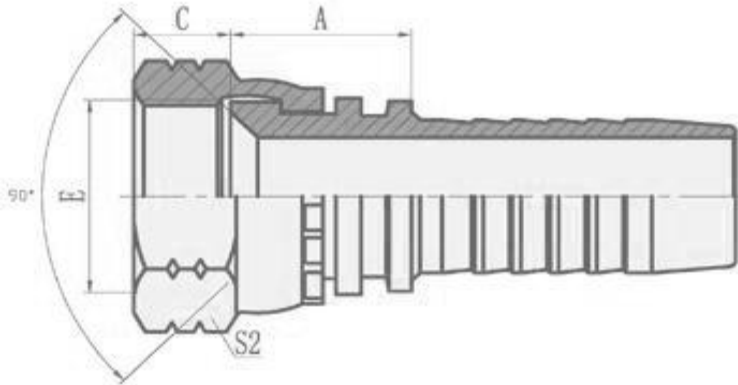
PART NO.	THREAD E	HOSE BORE		DIMENSIONS		
		DN	DASH	A	C	S1
MISMNC-04-04	7/16*20	6	4	25.5	12.7	12
MISMNC-05-05	1/2*20	8	5	27	14.2	14
MISMNC-06-06	5/8*18	10	6	28.5	15.7	17
MISMNC-08-08	3/4"*16	12	8	34	19	22
MISMNC-10-10	7/8"*14	16	10	38.5	22.4	24
MISMNC-12-12	1.1/16"*14	20	12	43.5	25.4	30

Dimensions are for reference only and subject to change without notice.

Warning for Your Safety

The system designer and user have the sole responsibility to select products suitable for their special application requirements to ensure the proper installation. Operation and maintenance of the product. Application details, material compatibility and product ratings should all be considered in the individual selection. Improper selection or use of products can cause property damage or personal injury. METALOK accepts no liability for any improper selection, installation, operation or maintenance.

SAE FEMALE 90° CONE Hose Fittings



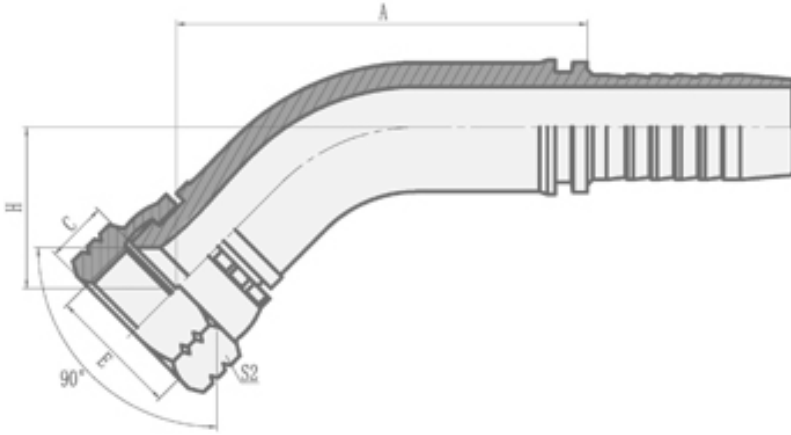
PART NO.	THREAD E	HOSE BORE		DIMENSIONS		
		DN	DASH	A	C	S2
MISFNC-04-03	7/16"*20	5	3	14	9	15
MISFNC-04-04	7/16"*20	6	4	15	9	15
MISFNC-05-05	1/2"*20	8	5	15.5	9.5	17
MISFNC-06-04	5/8"*18	6	4	17	11.3	22
MISFNC-06-05	5/8"*18	6	5	17	11.3	22
MISFNC-06-06	5/8"*18	10	6	17	11.3	22
MISFNC-08-08	3/4"*16	12	8	18	11	24

Dimensions are for reference only and subject to change without notice.

Warning for Your Safety

The system designer and user have the sole responsibility to select products suitable for their special application requirements to ensure the proper installation. Operation and maintenance of the product. Application details, material compatibility and product ratings should all be considered in the individual selection. Improper selection or use of products can cause property damage or personal injury. METALOK accepts no liability for any improper selection, installation, operation or maintenance.

45°SAE FEMALE 90°CONE Hose Fittings



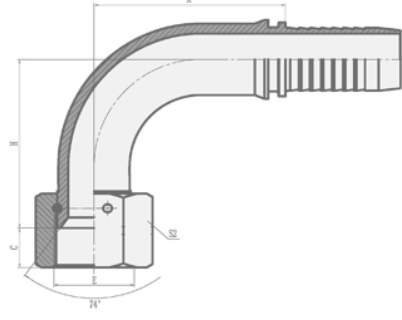
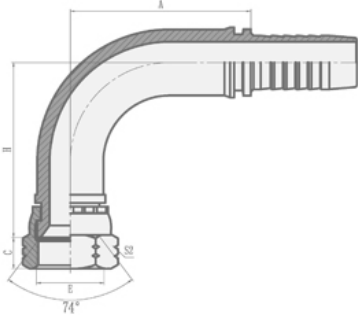
PART NO.	THREAD E	HOSE BORE		DIMENSIONS		
		DN	DASH	A	C	S2
MIFSFNC-04-03	7/16"*20	5	3	37.6	9	15
MIFSFNC-06-04	5/8"*18	6	4	42	11.3	22
MIFSFNC-06-05	5/8"*18	6	5	44.1	11.3	22
MIFSFNC-06-06	5/8"*18	10	6	45.7	11.3	22
MIFSFNC-08-08	3/4"*16	12	8	58.2	11	24
MIFSFNC-10-08	7/8"*14	12	8	58.2	13	27
MIFSFNC-10-10	7/8"*14	16	10	69.4	13	27

Dimensions are for reference only and subject to change without notice.

Warning for Your Safety

The system designer and user have the sole responsibility to select products suitable for their special application requirements to ensure the proper installation. Operation and maintenance of the product. Application details, material compatibility and product ratings should all be considered in the individual selection. Improper selection or use of products can cause property damage or personal injury. METALOK accepts no liability for any improper selection, installation, operation or maintenance.

90 JIC Female 74 Cone Seat Hose Fittings



PART NO.	THREAD E	HOSE BORE		DIMENSIONS			
		DN	DASH	A	C	H	S2
MINJFSC-04-03	7/16"*20	5	3	26.5	9	30.5	15
MINJFSC-04-04	7/16"*20	6	4	30	9	33.5	15
MINJFSC-05-04	1/2"*20	6	4	30	9.5	34	17
MINJFSC-05-05	1/2"*20	8	5	33	9.5	37	17
MINJFSC-05-06	1/2"*20	10	6	33.5	9.5	39.3	17
MINJFSC-06-04	9/16"*18	6	4	30	10.5	34	19
MINJFSC-06-05	9/16"*18	8	5	33	10.5	37	19
MINJFSC-06-06	9/16"*18	10	6	33.5	10.5	39.3	19
MINJFSC-06-08	9/16"*18	12	8	41	10.5	45.5	19
MINJFSC-08-06	3/4"*16	10	6	56.5	11	41.3	24
MINJFSC-08-08	3/4"*16	12	8	41	11	47	24
MINJFSC-08-10	3/4"*16	16	10	56.5	11	51.5	24
MINJFSC-10-08	7/8"*14	12	8	41	13	48	27
MINJFSC-10-10	7/8"*14	16	10	56.5	13	52.5	27
MINJFSC-10-12	7/8"*14	20	12	67	13	64	27
MINJFSC-12-08	1.1/16"*12	12	8	41	15	49.5	32
MINJFSC-12-10	1.1/16"*12	16	10	56.5	15	54	32
MINJFSC-12-12	1.1/16"*12	20	12	65.5	15	63.5	32
MINJFSC-12-16	1.1/16"*12	25	16	76.7	15	70	32
MINJFSC-14-12	1.3/16"*12	20	12	65.5	15	63.5	36
MINJFSC-16-12	1.5/16"*12	20	12	65.5	16	63.5	41
MINJFSC-16-16	1.5/16"*12	25	16	76.7	16	70	41
MINJFSC-16-20	1.5/16"*12	32	20	91.5	16	81	41
MINJFSC-20-20W	1.5/16"*12	32	20	91.5	17	80.5	50
MINJFSC-24-20W	1.7/8"*12	32	20	91.5	20	79.5	55
MINJFSC-24-24W	1.7/8"*12	40	24	109.4	20	94	55
MINJFSC-32-32W	2.1/2"*12	50	32	133.1	23.5	121.8	75

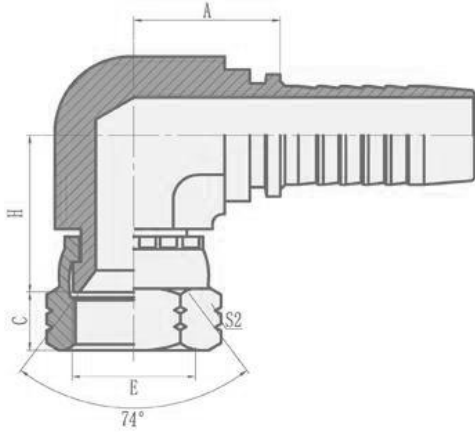
Dimensions are for reference only and subject to change without notice.

Warning for Your Safety

The system designer and user have the sole responsibility to select products suitable for their special application requirements to ensure the proper installation. Operation and maintenance of the product. Application details, material compatibility and product ratings should all be considered in the individual selection. Improper selection or use of products can cause property damage or personal injury. METALOK accepts no liability for any improper selection, installation, operation or maintenance.



90 JIC Compact Female 74 Cone Hose Fittings



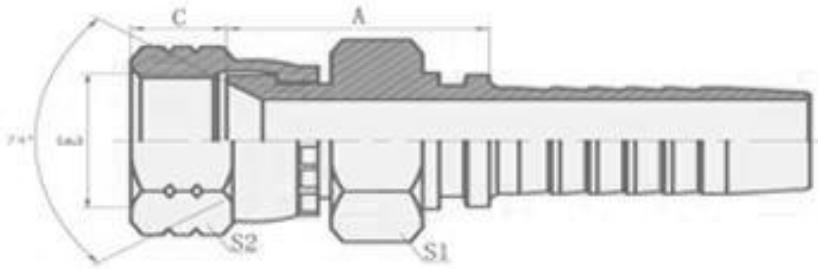
PART NO.	THREAD E	HOSE BORE		DIMENSIONS			
		DN	DASH	A	C	H	S1
MINJCFSC-04-04	7/16"*20	6	4	17.5	9	18	11
MINJCFSC-06-04	9/16"*18	6	4	19	10.5	21	14
MINJCFSC-06-06	9/16"*18	10	6	20	10.5	21	16
MINJCFSC-08-06	3/4"*16	10	6	23	11	25	19
MINJCFSC-08-08	3/4"*16	12	8	23.5	11	25	22
MINJCFSC-10-08	7/8"*14	12	8	23.5	13	27.5	22
MINJCFSC-10-10	7/8"*14	16	10	25	13	27.5	22
MINJCFSC-12-12	1.1/16"*12	20	12	27.5	15	30	27
MINJCFSC-16-16	1.5/16"*12	25	16	43	16	34.3	38

Dimensions are for reference only and subject to change without notice.

Warning for Your Safety

The system designer and user have the sole responsibility to select products suitable for their special application requirements to ensure the proper installation. Operation and maintenance of the product. Application details, material compatibility and product ratings should all be considered in the individual selection. Improper selection or use of products can cause property damage or personal injury. METALOK accepts no liability for any improper selection, installation, operation or maintenance.

**JIC Female 74 Cone Seat Double Hexagon-SAE
Hose Fittings**



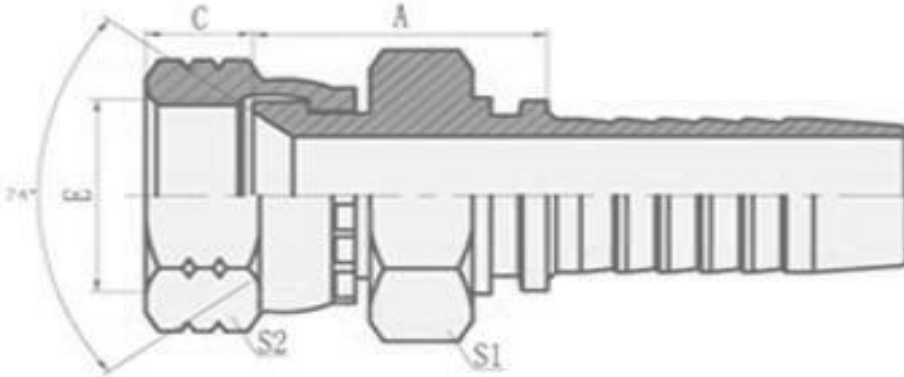
PART NO.	THREAD E	HOSE BORE		DIMENSIONS			
		DN	DASH	A	C	S1	S2
MIJFSCDH-04-04SM	7/16"*20	6	4	20	9	12	15
MIJFSCDH-05-04SM	1/2"*20	6	4	20.5	9.5	12	17
MIJFSCDH-06-04SM	9/16"*18	6	4	21	10.5	14	19
MIJFSCDH-06-06SM	9/16"*18	10	6	21	10.5	17	19
MIJFSCDH-08-06SM	3/4"*16	10	6	25	11	19	24
MIJFSCDH-08-08SM	3/4"*16	12	8	24.5	11	22	24
MIJFSCDH-08-10SM	3/4"*16	16	10	25.5	11	22	24
MIJFSCDH-10-08SM	7/8"*14	12	8	24	13	22	27
MIJFSCDH-10-10SM	7/8"*14	16	10	27	13	22	27
MIJFSCDH-12-12SM	1.1/16"*12	20	12	31.5	15	27	32
MIJFSCDH-16-12SM	1.5/16"*12	20	12	31.5	16	32	41
MIJFSCDH-16-16SM	1.5/16"*12	25	16	32.5	16	32	41
MIJFSCDH-20-20SM	1.7/16"*12	32	20	37	17	41	50

Dimensions are for reference only and subject to change without notice.

Warning for Your Safety

The system designer and user have the sole responsibility to select products suitable for their special application requirements to ensure the proper installation. Operation and maintenance of the product. Application details, material compatibility and product ratings should all be considered in the individual selection. Improper selection or use of products can cause property damage or personal injury. METALOK accepts no liability for any improper selection, installation, operation or maintenance.

JIC Female 74 Cone Seat Double Hexagon -SAE Hose Fittings



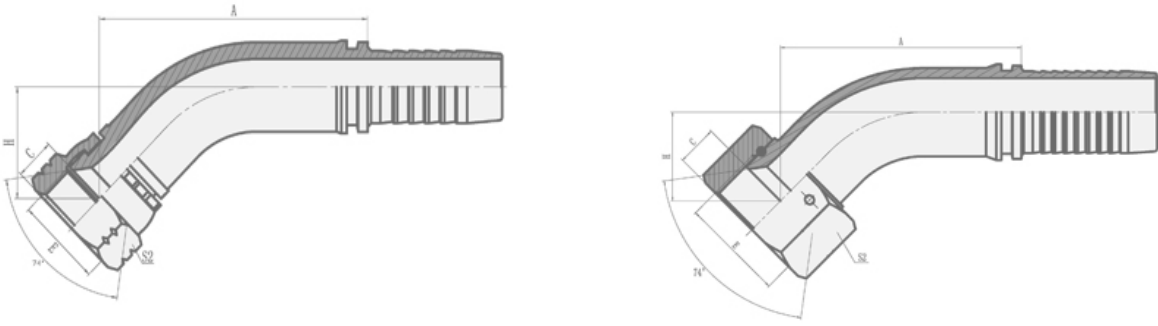
PART NO.	THREAD E	HOSE BORE		DIMENSIONS			
		DN	DASH	A	C	S1	S2
MIJFSCDHS-04-04	7/16"*20	6	4	20	9	15	15
MIJFSCDHS-05-04	1/2"*20	6	4	20.5	9.5	17	17
MIJFSCDHS-06-04	9/16"*18	6	4	21	10.5	19	19
MIJFSCDHS-06-06	9/16"*18	10	6	21	10.5	19	19
MIJFSCDHS-08-06	3/4"*16	10	6	25	11	24	24
MIJFSCDHS-08-08	3/4"*16	12	8	24.5	11	24	24
MIJFSCDHS-08-10	3/4"*16	16	10	24.5	11	24	24
MIJFSCDHS-10-08	7/8"*14	12	8	28	13	27	27
MIJFSCDHS-10-10	7/8"*14	16	10	29	13	27	27
MIJFSCDHS-12-12	1.1/16"*12	20	12	31.5	15	32	32
MIJFSCDHS-16-12	1.5/16"*12	20	12	33.5	16	41	41
MIJFSCDHS-16-16	1.5/16"*12	25	16	34.5	16	41	41
MIJFSCDHS-16-20	1.5/16"*12	32	20	36.5	16	41	41
MIJFSCDHS-20-20	1.7/16"*12	32	20	39	17	50	50

Dimensions are for reference only and subject to change without notice.

Warning for Your Safety

The system designer and user have the sole responsibility to select products suitable for their special application requirements to ensure the proper installation. Operation and maintenance of the product. Application details, material compatibility and product ratings should all be considered in the individual selection. Improper selection or use of products can cause property damage or personal injury. METALOK accepts no liability for any improper selection, installation, operation or maintenance.

45 JIC Female 74 Cone- SAE Hose Fittings



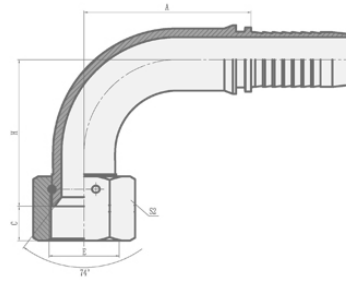
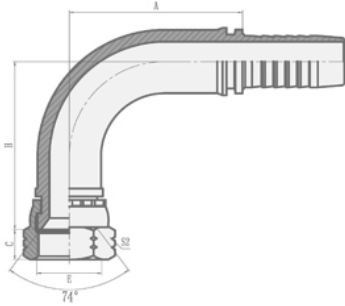
PART NO.	THREAD E	HOSE BORE		DIMENSIONS			
		DN	DASH	A	C	H	S2
MIFJFSCS-04-03	7/16"*20	5	3	37.6	9	17.2	15
MIFJFSCS-04-04	7/16"*20	6	4	40.2	9	18.1	15
MIFJFSCS-05-04	1/2"*20	6	4	40.5	9.5	18.5	17
MIFJFSCS-05-05	1/2"*20	8	5	42.7	9.5	19.3	17
MIFJFSCS-05-06	1/2"*20	10	6	44.6	9.5	20.3	17
MIFJFSCS-06-04	9/16"*18	6	4	40.5	10.5	18.5	19
MIFJFSCS-06-05	9/16"*18	8	5	42.7	10.5	19.3	19
MIFJFSCS-06-06	9/16"*18	10	6	44.3	10.5	20	19
MIFJFSCS-06-08	9/16"*18	12	8	56.8	10.5	21.9	19
MIFJFSCS-08-06	3/4"*16	10	6	45.7	11	21.4	24
MIFJFSCS-08-08	3/4"*16	12	8	58.6	11	23.5	24
MIFJFSCS-10-08	7/8"*14	12	8	58.9	13	24	27
MIFJFSCS-10-10	7/8"*14	16	10	70.1	13	25.3	27
MIFJFSCS-10-12	7/8"*14	20	12	77	13	28.9	27
MIFJFSCS-12-08	1.1/16"*12	12	8	60	15	25	32
MIFJFSCS-12-10	1.1/16"*12	16	10	71.2	15	26.4	32
MIFJFSCS-12-12	1.1/16"*12	20	12	77.4	15	30	32
MIFJFSCS-12-16	1.1/16"*12	25	16	85.3	15	31	32
MIFJFSCS-14-12	1.3/16"*12	20	12	77.4	15	30	36
MIFJFSCS-16-12	1.5/16"*12	20	12	77.4	16	30	41
MIFJFSCS-16-16	1.5/16"*12	25	16	85.7	16	31.5	41
MIFJFSCS-16-20	1.5/16"*12	32	20	96.3	16	35.5	41
MIFJFSCS-20-20W	1.5/8"*12	32	20	96.6	17	35.9	50
MIFJFSCS-24-20W	1.7/8"*12	32	20	100.8	20	40.1	55
MIFJFSCS-24-24W	1.7/8"*12	40	24	114.8	20	44.1	55
MIFJFSCS-32-32W	2.1/2"*12	50	32	135.9	23.5	51.6	75

Dimensions are for reference only and subject to change without notice.

Warning for Your Safety

The system designer and user have the sole responsibility to select products suitable for their special application requirements to ensure the proper installation. Operation and maintenance of the product. Application details, material compatibility and product ratings should all be considered in the individual selection. Improper selection or use of products can cause property damage or personal injury. METALOK accepts no liability for any improper selection, installation, operation or maintenance.

90 Female 74 Cone SEAT-SAE Hose Fittings



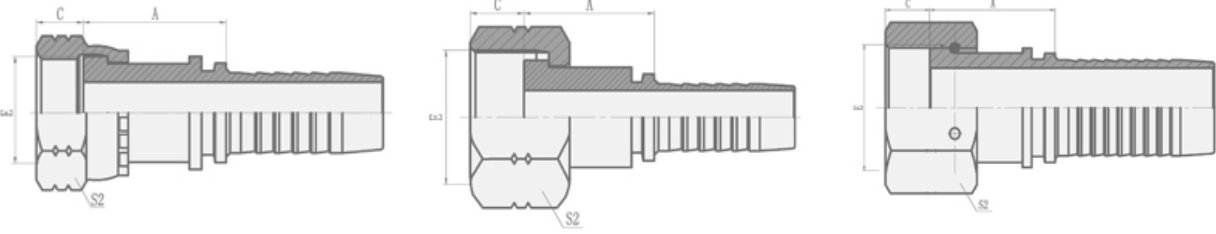
PART NO.	THREAD E	HOSE BORE		DIMINATION			
		DN	DASH	A	C	H	S2
MINFSCS-04-03	7/16"*20	5	3	26.5	9	30.5	15
MINFSCS-04-04	7/16"*20	6	4	30	9	33.5	15
MINFSCS-05-04	1/2"*20	6	4	30	9.5	34	17
MINFSCS-05-05	1/2"*20	8	5	33	9.5	37	17
MINFSCS-05-06	1/2"*20	10	6	35.3	9.5	39.3	17
MINFSCS-06-04	9/16"*18	6	4	30	10.5	34	19
MINFSCS-06-05	9/16"*18	8	5	33	10.5	37	19
MINFSCS-06-06	9/16"*18	10	6	35.3	10.5	39.3	19
MINFSCS-06-08	9/16"*18	12	8	41	10.5	45.5	19
MINFSCS-08-06	3/4"*16	10	6	35.3	11	41.3	24
MINFSCS-08-08	3/4"*16	12	8	41	11	47	24
MINFSCS-08-10	3/4"*16	16	10	56.5	11	51.5	24
MINFSCS-10-08	7/8"*14	12	8	41	13	48	27
MINFSCS-10-10	7/8"*14	16	10	56.5	13	52.5	27
MINFSCS-10-12	7/8"*14	20	12	67	13	64	27
MINFSCS-12-08	1.1/16"*12	12	8	41	15	49.5	32
MINFSCS-12-10	1.1/16"*12	16	10	56.5	15	54	32
MINFSCS-12-12	1.1/16"*12	20	12	65.5	15	63.5	32
MINFSCS-12-16	1.1/16"*12	25	16	76.7	15	70	32
MINFSCS-14-12	1.3/16"*12	20	12	65.5	15	63.5	36
MINFSCS-16-12	1.5/16"*12	20	12	65.5	16	63.5	41
MINFSCS-16-16	1.5/16"*12	25	16	76.7	16	70	41
MINFSCS-16-20	1.5/16"*12	32	20	91.5	16	81	41
MINFSCS-20-20W	1.5/8"*12	32	20	91.5	17	80.5	50
MINFSCS-24-20W	1.7/8"*12	32	20	91.5	20	79.5	55
MINFSCS-24-24W	1.7/8"*12	40	24	109.4	20	94	55
MINFSCS-32-32W	2.1/2"*12	50	32	133.1	23.5	121.8	75

Dimensions are for reference only and subject to change without notice.

Warning for Your Safety

The system designer and user have the sole responsibility to select products suitable for their special application requirements to ensure the proper installation. Operation and maintenance of the product. Application details, material compatibility and product ratings should all be considered in the individual selection. Improper selection or use of products can cause property damage or personal injury. METALOK accepts no liability for any improper selection, installation, operation or maintenance.

ORFS FEMALE FLAT SEAT-SAE Hose Fittings



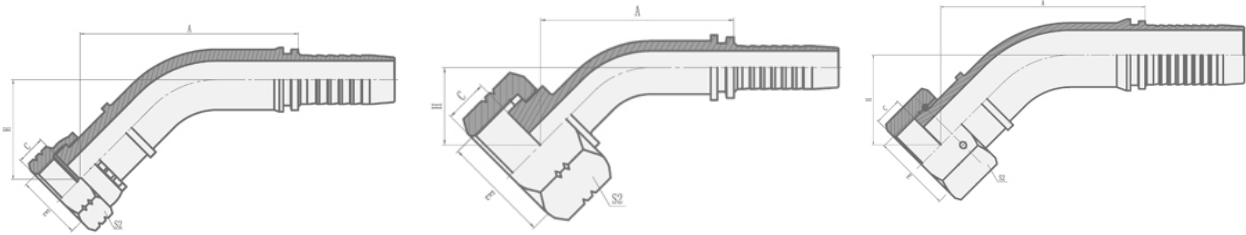
PART NO.	THREAD E	HOSE BORE		DIMENSIONS		
		DN	DASH	A	C	S2
MI-04-04	9/16"*18	6	4	22.5	8.5	19
MI-04-05	9/16"*18	8	5	22.5	8.5	19
MI-04-06	9/16"*18	10	6	22.5	8.5	19
MI-06-04T	11/16"*16	6	4	23.5	10	22
MI-06-05T	11/16"*16	8	5	23.5	10	22
MI-06-06	11/16"*16	10	6	23.5	10	22
MI-06-08	11/16"*16	12	8	26	10	22
MI-08-05T	13/16"*16	8	5	25	11	27
MI-08-06T	13/16"*16	10	6	25	11	27
MI-08-08	13/16"*16	12	8	28	11	27
MI-08-10	13/16"*16	16	10	29	11	27
MI-10-08T	1"*14	12	8	29.5	13.5	30
MI-10-10	1"*14	16	10	33.5	13.5	30
MI-10-12	1"*14	20	12	33.5	13.5	30
MI-12-08T	1.3/16"*12	12	8	30.5	15	36
MI-12-10T	1.3/16"*12	16	10	31.5	15	36
MI-12-12	1.3/16"*12	20	12	35	15	36
MI-12-16	1.3/16"*12	25	16	36	15	36
MI-16-12T	1.7/16"*12	20	12	35	14.8	41
MI-16-14T	1.7/16"*12	22	14	34	14.8	41
MI-16-16T	1.7/16"*12	25	16	35	14.8	41
MI-16-20	1.7/16"*12	32	20	39.5	14.8	41
MI-20-16T	1.11/16"*12	25	16	35	15	50
MI-20-20W	1.11/16"*12	32	20	39.5	15	50
MI-20-24W	1.11/16"*12	40	24	39.5	15	50
MI-24-20T	2"*12	32	20	36	14.8	60
MI-24-24T	2"*12	40	24	36	14.8	60

Dimensions are for reference only and subject to change without notice.

Warning for Your Safety

The system designer and user have the sole responsibility to select products suitable for their special application requirements to ensure the proper installation. Operation and maintenance of the product. Application details, material compatibility and product ratings should all be considered in the individual selection. Improper selection or use of products can cause property damage or personal injury. METALOK accepts no liability for any improper selection, installation, operation or maintenance.

45 ORFS FEMALE FLAT SEAT-SAE Hose Fittings



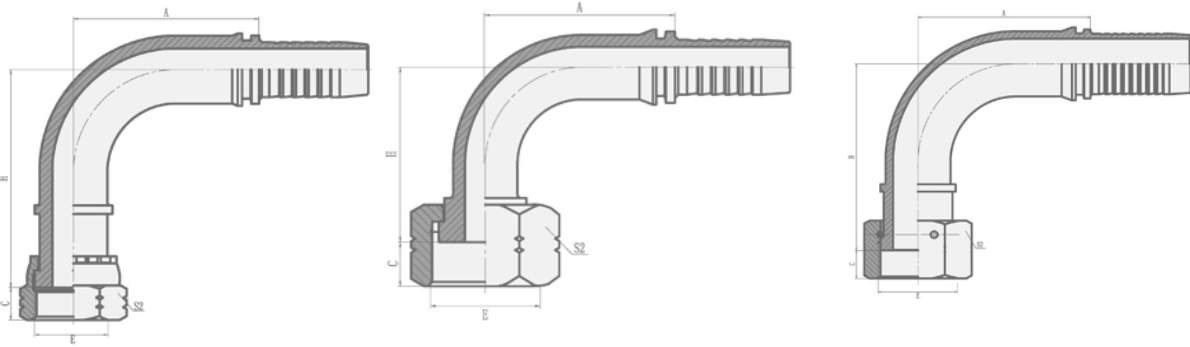
PART NO.	THREAD E	HOSE BORE		DIMENSIONS			
		DN	DASH	A	H	C	S2
MIFOFFS-04-04	9/16"*18	6	4	45.5	23.4	8.5	19
MIFOFFS-04-05	9/16"*18	8	5	47.6	24.3	8.5	19
MIFOFFS-04-06	9/16"*18	10	6	49.2	24.9	8.5	19
MIFOFFS-06-04T	11/16"*16	6	4	39.5	17.4	10	22
MIFOFFS-06-05T	11/16"*16	8	5	42.3	19	10	22
MIFOFFS-06-06	11/16"*16	10	6	51.7	27.4	10	22
MIFOFFS-06-08	11/16"*16	12	8	63.9	29	10	22
MIFOFFS-08-06T	13/16"*16	10	6	44.6	20.3	11	27
MIFOFFS-08-08	13/16"*16	12	8	65.3	30.4	11	27
MIFOFFS-08-10	13/16"*16	16	10	76.5	31.7	11	27
MIFOFFS-10-08T	1"*14	12	8	58.2	23.3	13.5	30
MIFOFFS-10-10	1"*14	16	10	79.7	34.9	13.5	30
MIFOFFS-10-12	1"*14	20	12	86.5	38.4	13.5	30
MIFOFFS-12-08T	1.3/16"*12	12	8	58.2	23.3	15	36
MIFOFFS-12-10T	1.3/16"*12	16	10	69.4	24.6	15	36
MIFOFFS-12-12	1.3/16"*12	20	12	87.6	39.5	15	36
MIFOFFS-12-16	1.3/16"*12	25	16	95.3	41	15	36
MIFOFFS-16-12T	1.7/16"*12	20	12	74	29.6	14.8	41
MIFOFFS-16-14T	1.7/16"*12	22	14	78.7	28.5	14.8	41
MIFOFFS-16-16T	1.7/16"*12	25	16	84.1	29.7	14.8	41
MIFOFFS-16-20	1.7/16"*12	32	20	103.8	46.1	14.8	41
MIFOFFS-20-16T	1.11/16"*12	25	16	80.9	32.7	15	50
MIFOFFS-20-20W	1.11/16"*12	32	20	111.2	49	15	50
MIFOFFS-20-24W	1.11/16"*12	40	24	123.6	52.9	15	50
MIFOFFS-24-20T	2"*12	32	20	94.5	33.8	14.8	60
MIFOFFS-24-24T	2"*12	40	24	108.5	37.7	14.8	60

Dimensions are for reference only and subject to change without notice.

Warning for Your Safety

The system designer and user have the sole responsibility to select products suitable for their special application requirements to ensure the proper installation. Operation and maintenance of the product. Application details, material compatibility and product ratings should all be considered in the individual selection. Improper selection or use of products can cause property damage or personal injury. METALOK accepts no liability for any improper selection, installation, operation or maintenance.

90 ORFS FEMALE FLAT SEAT-SAE Hose Fittings



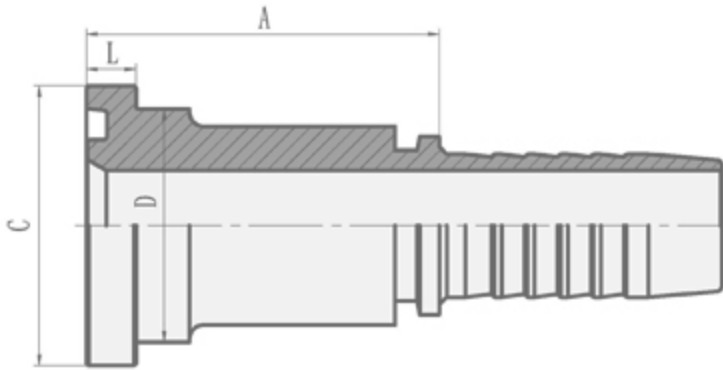
PART NO.	THREAD E	HOSE BORE		DIMENSIONS			
		DN	DASH	A	H	C	S2
MINOFFS-04-04	9/16"*18	6	4	30	41	8.5	19
MINOFFS-04-05	9/16"*18	8	5	33	44	8.5	19
MINOFFS-04-06	9/16"*18	10	6	35.3	46.3	8.5	19
MINOFFS-06-05T	11/16"*16	8	5	33	37.5	10	22
MINOFFS-06-06	11/16"*16	10	6	35.3	49.8	10	22
MINOFFS-06-08	11/16"*16	12	8	41	55	10	22
MINOFFS-08-06T	13/16"*16	10	6	35.3	39.8	11	27
MINOFFS-08-08	13/16"*16	12	8	41	57	11	27
MINOFFS-08-10	13/16"*16	16	10	56.5	61.5	11	27
MINOFFS-10-08T	1"*14	12	8	41	46	13.5	30
MINOFFS-10-10	1"*14	16	10	56.5	66	13.5	30
MINOFFS-10-12	1"*14	20	12	65.5	75.5	13.5	30
MINOFFS-12-10T	1.3/16"*12	16	10	56.5	51.5	15	36
MINOFFS-12-12	1.3/16"*12	20	12	65.5	77	15	36
MINOFFS-12-16	1.3/16"*12	25	16	76.7	83.5	15	36
MINOFFS-16-12T	1.7/16"*12	20	12	65.5	63	14.8	41
MINOFFS-16-14T	1.7/16"*12	22	14	71.2	63	14.8	41
MINOFFS-16-16T	1.7/16"*12	25	16	76.9	67.5	14.8	41
MINOFFS-16-20	1.7/16"*12	32	20	91.5	96	14.8	41
MINOFFS-20-16T	1.11/16"*12	25	16	76.7	67.5	15	50
MINOFFS-20-20W	1.11/16"*12	32	20	93	100	15	50
MINOFFS-20-24W	1.11/16"*12	40	24	109.4	113.5	15	50
MINOFFS-24-20T	2"*12	32	20	91.5	78.5	14.8	60
MINOFFS-24-24T	2"*12	40	24	109.4	92	14.8	60

Dimensions are for reference only and subject to change without notice.

Warning for Your Safety

The system designer and user have the sole responsibility to select products suitable for their special application requirements to ensure the proper installation. Operation and maintenance of the product. Application details, material compatibility and product ratings should all be considered in the individual selection. Improper selection or use of products can cause property damage or personal injury. METALOK accepts no liability for any improper selection, installation, operation or maintenance.

SAE Flange 3000 PSI Hose Fittings



PART NO.	FLANGE SIZE	HOSE BORE		DIMENSIONS			
		DN	DASH	A	C	D	L
MISFTP-08-08	1/2"	12	8	46	30.2	24	67.3
MISFTP-12-08	3/4"	12	8	47	38.1	31.7	67.3
MISFTP-12-10	3/4"	16	10	48	38.1	31.7	67.3
MISFTP-12-12	3/4"	20	12	48	38.1	31.7	67.3
MISFTP-12-16	3/4"	25	16	49	38.1	31.7	67.3
MISFTP-16-12	1"	20	12	51	44.4	38	8
MISFTP-16-16	1"	25	16	52	44.4	38	8
MISFTP-16-20	1"	32	20	53	44.4	38	8
MISFTP-20-16	1.1/4"	25	16	57	50.8	43	8
MISFTP-20-20	1.1/4"	32	20	58	50.8	43	8
MISFTP-24-20	1.1/2"	32	20	68	60.3	50	8
MISFTP-24-24	1.1/2"	40	24	68	60.3	50	8
MISFTP-32-24	2"	40	24	70	71.4	62	9.53
MISFTP-32-32	2"	50	32	70	71.4	62	9.53
MISFTP-40-40	2.1/2"	64	40	76	84.1	74	9.53

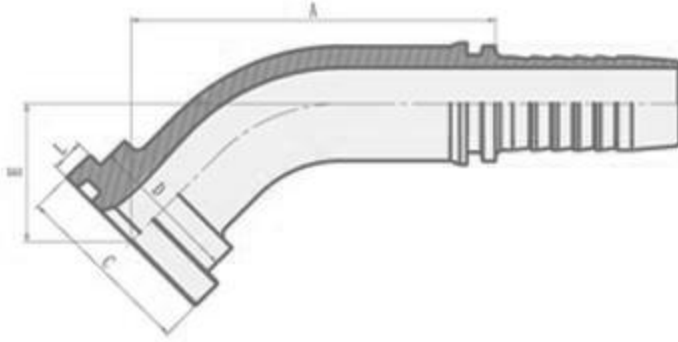
Dimensions are for reference only and subject to change without notice.

Warning for Your Safety

The system designer and user have the sole responsibility to select products suitable for their special application requirements to ensure the proper installation. Operation and maintenance of the product. Application details, material compatibility and product ratings should all be considered in the individual selection. Improper selection or use of products can cause property damage or personal injury. METALOK accepts no liability for any improper selection, installation, operation or maintenance.

FSFTP 45 SAE FLANGE 3000 PSI

Hose Fittings



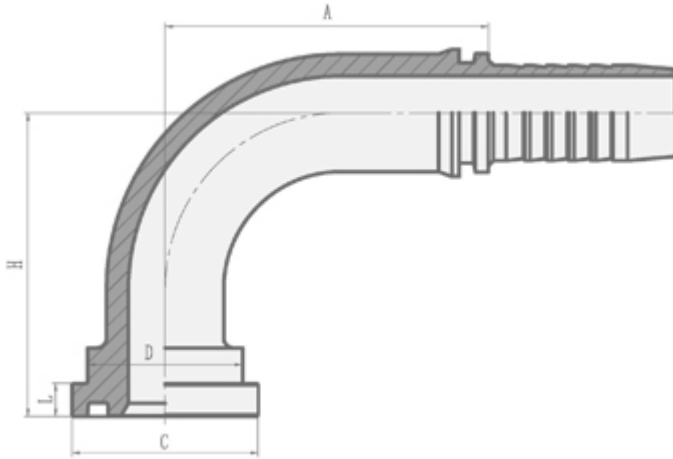
PART NO.	FLANGE SIZE	HOSE BORE		DIMENSIONS				
		DN	DASH	A	B	D	H	L
MIFSFTP-08-08	1/2"	12	8	58.2	30.2	24	23.3	67.3
MIFSFTP-12-08	3/4"	12	8	58.9	38.1	31.7	24	67.3
MIFSFTP-12-10	3/4"	16	10	70.1	38.1	31.7	25.3	67.3
MIFSFTP-12-12	3/4"	20	12	77	38.1	31.7	28.9	67.3
MIFSFTP-16-12	1"	20	12	77	44.4	38	28.9	8
MIFSFTP-16-16	1"	25	16	85.2	44.4	38	29.7	8
MIFSFTP-16-20	1"	32	20	94.5	44.4	38	33.8	8
MIFSFTP-20-16	1.1/4"	25	16	85.2	50.8	43	29.7	8
MIFSFTP-20-20	1.1/4"	32	20	94.5	50.8	43	33.8	8
MIFSFTP-24-20	1.1/2"	32	20	95.9	60.3	50	35.2	8
MIFSFTP-24-24	1.1/2"	40	24	109.9	60.3	50	39.1	8
MIFSFTP-32-24	2"	40	24	109.9	71.4	62	39.1	9.53
MIFSFTP-32-32	2"	50	32	129.3	71.4	62	46.3	9.53

Dimensions are for reference only and subject to change without notice.

Warning for Your Safety

The system designer and user have the sole responsibility to select products suitable for their special application requirements to ensure the proper installation. Operation and maintenance of the product. Application details, material compatibility and product ratings should all be considered in the individual selection. Improper selection or use of products can cause property damage or personal injury. METALOK accepts no liability for any improper selection, installation, operation or maintenance.

90°SAE Flange 3000 PSI Hose Fittings



PART NO.	FLANGE SIZE	HOSE BORE		DIMENSIONS				
		DN	DASH	A	B	D	H	L
MINSFTP-08-08	1/2"	12	8	41	30.2	24	47	67.3
MINSFTP-12-08	3/4"	12	8	41	38.1	31.7	48	67.3
MINSFTP-12-10	3/4"	16	10	56.5	38.1	31.7	52.5	67.3
MINSFTP-12-12	3/4"	20	12	66.2	38.1	31.7	62	67.3
MINSFTP-12-12(H100)	3/4"	20	12	65.5	38.1	31.7	100	67.3
MINSFTP-12-12(H127)	3/4"	20	12	65.5	38.1	31.7	127	67.3
MINSFTP-12-12(H150)	3/4"	20	12	65.5	38.1	31.7	150	67.3
MINSFTP-12-16	3/4"	25	16	76.7	38.1	31.7	67.5	67.3
MINSFTP-16-12	1"	25	12	66.2	44.4	38	62	8
MINSFTP-16-16	1"	25	16	78	44.4	38	67.5	8
MINSFTP-16-16(H100)	1"	25	16	76.7	44.4	38	100	8
MINSFTP-16-16(H127)	1"	32	16	76.7	44.4	38	127	8
MINSFTP-16-16(H150)	1"	25	16	76.7	44.4	38	150	8
MINSFTP-16-20	1"	32	20	91.5	44.4	38	78.5	8
MINSFTP-20-16	1.1/4"	25	16	78	50.8	43	67.5	8
MINSFTP-20-20	1.1/4"	32	20	91.5	50.8	43	78.5	8
MINSFTP-20-20(H100)	1.1/4"	32	20	91.5	50.8	43	100	8
MINSFTP-20-20(H127)	1.1/4"	32	20	91.5	50.8	43	127	8
MINSFTP-20-20(H150)	1.1/4"	32	20	91.5	50.8	43	150	8
MINSFTP-20-24	1.1/4"	40	24	108.5	50.8	43	78.5	8
MINSFTP-24-20	1.1/2"	32	20	91.5	60.3	50	78.5	8
MINSFTP-24-24	1.1/2"	40	24	109.4	60.3	50	94	8
MINSFTP-24-24(H127)	1.1/2"	40	24	109.4	60.3	50	127	8
MINSFTP-32-24	2"	40	24	109.4	71.4	62	94	9.53
MINSFTP-32-32	2"	50	32	131.8	71.4	62	114.3	9.53
MINSFTP-40-32	2.1/2"	50	32	131.8	84.1	74.4	114.3	9.53

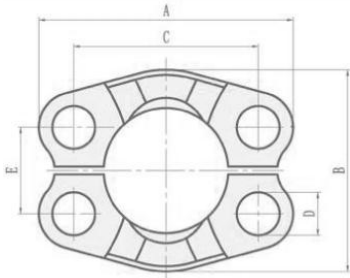
Dimensions are for reference only and subject to change without notice.

Warning for Your Safety

The system designer and user have the sole responsibility to select products suitable for their special application requirements to ensure the proper installation. Operation and maintenance of the product. Application details, material compatibility and product ratings should all be considered in the individual selection. Improper selection or use of products can cause property damage or personal injury. METALOK accepts no liability for any improper selection, installation, operation or maintenance.

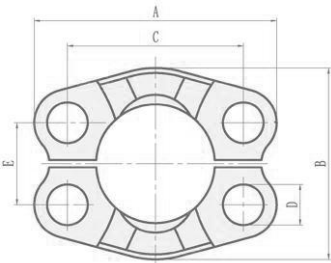


FL SAE SPLIT FLANGE CLAMPS 3000
PSI Hose Fittings



PART NO.	MILANGE SIZE	Bolt	DIMENSIONS					Mpa
			A	B	C	D	E	
FL-08	1/2"	M8*25	53.8	46.1	38.1	9	17.5	34.5
FL-12	3/4"	M10*30	65	52.4	47.6	11	22.2	
FL-16	1"	M10*30	69.9	58.7	52.4	11	26.2	
FL-20	1.1/4"	M10*30	79.2	73	58.7	11	30.2	27.6
FL-24	1.1/2"	M12*35	93.7	82.6	69.9	13.5	35.7	20.7
FL-32	2"	M12*35	101.6	96.8	77.8	13.5	42.9	
FL-40	2.1"	M12*40	114	109	88.9	13.5	50.8	10

FS SAE SPLIT FLANGE CLAMPS 6000
PSI Hose Fittings



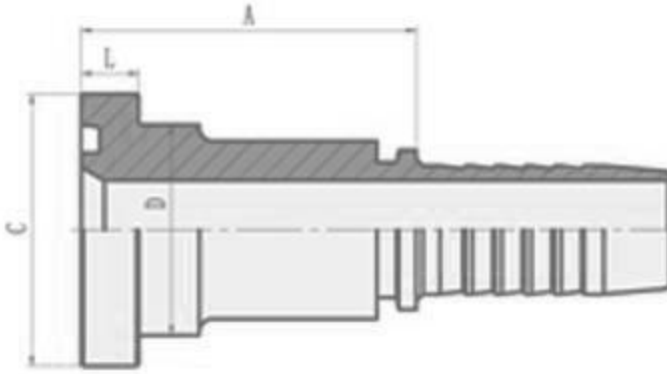
PART NO.	Flange size	BOLT	DIMENSIONS					Mpa
			A	B	C	D	E	
FS-08	1/2"	M8*30	56.3	49.2	40.5	9	18.2	42
FS-12	3/4"	M10*35	71.4	61.8	50.8	11	23.8	
FS-16	1"	M12*45	81	71.4	57.2	11	27.8	
FS-20	1.1/4"	M14*50	95.3	79.2	66.7	11	31.8	
FS-24	1.1/2"	M16*55	112.8	96.8	79.4	13.5	36.6	
FS-32	2"	M20*70	133.4	114	96.8	13.5	44.4	

Dimensions are for reference only and subject to change without notice.

Warning for Your Safety

The system designer and user have the sole responsibility to select products suitable for their special application requirements to ensure the proper installation. Operation and maintenance of the product. Application details, material compatibility and product ratings should all be considered in the individual selection. Improper selection or use of products can cause property damage or personal injury. METALOK accepts no liability for any improper selection, installation, operation or maintenance.

SAE FLANGE 6000 PSI Hose Fittings



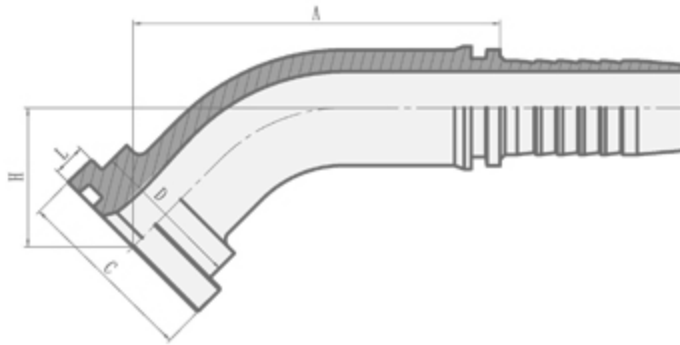
PART NO.	FLANGE SIZE	HOSE BORE		DIMENSIONS			
		DN	DASH	A	C	D	L
MISFSP-08-08	1/2"	12	8	47	31.7	24	7.75
MISFSP-12-10	3/4"	16	10	51	41.3	32	8.76
MISFSP-12-12	3/4"	20	12	51	41.3	32	8.76
MISFSP-16-12	1"	20	12	56	47.6	38	9.53
MISFSP-16-16	1"	25	16	57	47.6	38	9.53
MISFSP-16-20	1"	32	20	61	47.6	38	9.53
MISFSP-20-16	1.1/4"	25	16	65	54	44	10.29
MISFSP-20-20	1.1/4"	32	20	66	54	44	10.29
MISFSP-24-20	1.1/2"	32	20	75	63.5	51	12.57
MISFSP-24-24	1.1/2"	40	24	75	63.5	51	12.57
MISFSP-32-24	2"	40	24	85	79.4	67	12.57
MISFSP-32-32	2"	50	32	85	79.4	67	12.57

Dimensions are for reference only and subject to change without notice.

Warning for Your Safety

The system designer and user have the sole responsibility to select products suitable for their special application requirements to ensure the proper installation. Operation and maintenance of the product. Application details, material compatibility and product ratings should all be considered in the individual selection. Improper selection or use of products can cause property damage or personal injury. METALOK accepts no liability for any improper selection, installation, operation or maintenance.

45 SAE FLANGE 6000 PSI Hose Fittings



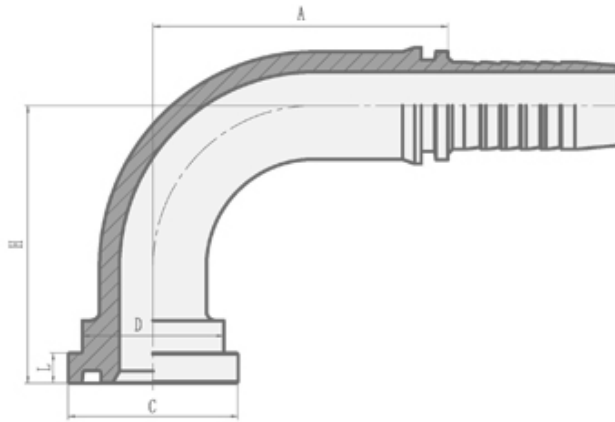
PART NO.	FLANGE SIZE	HOSE BORE		DIMENSIONS				
		DN	DASH	A	C	D	H	L
MIFSFP-08-08	1/2"	12	8	58.9	31.7	24	24	7.75
MIFSFP-08-12	1/2"	20	12	74.9	31.7	24	27.5	7.75
MIFSFP-12-10	3/4"	16	10	72.5	41.3	32	28.2	8.76
MIFSFP-12-12	3/4"	20	12	79.2	41.3	32	31.8	8.76
MIFSFP-16-16	1"	25	16	90.2	47.6	38	34.7	9.53
MIFSFP-20-20	1.1/4"	32	20	103.8	54	44	41.5	10.29
MIFSFP-24-20	1.1/2"	32	20	105.8	63.5	51	45.1	12.57
MIFSFP-24-24	1.1/2"	40	24	116.2	63.5	51	45.5	12.57
MIFSFP-32-24	2"	40	24	125.4	79.4	67	54.7	12.57
MIFSFP-32-32	2"	50	32	135.7	79.4	67	52.7	12.57

Dimensions are for reference only and subject to change without notice.

Warning for Your Safety

The system designer and user have the sole responsibility to select products suitable for their special application requirements to ensure the proper installation. Operation and maintenance of the product. Application details, material compatibility and product ratings should all be considered in the individual selection. Improper selection or use of products can cause property damage or personal injury. METALOK accepts no liability for any improper selection, installation, operation or maintenance.

90° SAE Flange 6000 PSI Hose Fittings



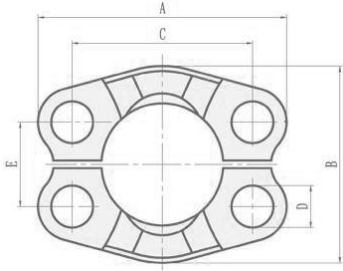
PART NO.	FLANGE SIZE	HOSE BORE		DIMENSIONS				
		DN	DASH	A	C	D	H	L
MINSFSP-08-08	1/2"	12	8	41	31.7	24	48	7.75
MINSFSP-12-10	3/4"	16	10	56.5	41.3	32	56.5	8.76
MINSFSP-12-12	3/4"	20	12	66.2	41.3	32	66	8.76
MINSFSP-16-12	1"	20	12	66.2	47.6	38	69	9.53
MINSFSP-16-16	1"	25	16	78	47.6	38	74.5	9.53
MINSFSP-16-20	1"	32	20	91.5	47.6	38	85.5	9.53
MINSFSP-20-16	1.1/4"	25	16	78	54	44	78.5	10.29
MINSFSP-20-20	1.1/4"	32	20	91.5	54	44	89.5	10.29
MINSFSP-24-20	1.1/2"	32	20	91.5	63.5	51	94.5	12.57
MINSFSP-24-24	1.1/2"	40	24	109.4	63.5	51	108	12.57
MINSFSP-32-24	2"	40	24	109.4	79.4	67	116	12.57
MINSFSP-32-32	2"	50	32	131.8	79.4	67	136.3	12.57

Dimensions are for reference only and subject to change without notice.

Warning for Your Safety

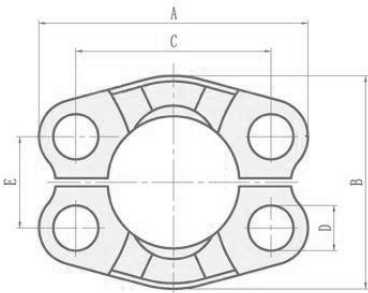
The system designer and user have the sole responsibility to select products suitable for their special application requirements to ensure the proper installation. Operation and maintenance of the product. Application details, material compatibility and product ratings should all be considered in the individual selection. Improper selection or use of products can cause property damage or personal injury. METALOK accepts no liability for any improper selection, installation, operation or maintenance.

FL SAE SPLIT FLANGE CLAMPS 3000 PSI Hose Fittings



PART NO.	FLANGE SIZE	Bolt	DIMENSIONS					Mpa
			A	B	C	D	E	
FL-08	1/2"	M8*25	53.8	46.1	38.1	9	17.5	34.5
FL-12	3/4"	M10*30	65	52.4	47.6	11	22.2	
FL-16	1"	M10*30	69.9	58.7	52.4	11	26.2	
FL-20	1.1/4"	M10*30	79.2	73	58.7	11	30.2	27.6
FL-24	1.1/2"	M12*35	93.7	82.6	69.9	13.5	35.7	20.7
FL-32	2"	M12*35	101.6	96.8	77.8	13.5	42.9	
FL-40	2.1"	M12*40	114	109	88.9	13.5	50.8	10

FS SAE SPLIT FLANGE CLAMPS 6000 PSI Hose Fittings



PART NO.	FLANGE SIZE	Bolt	DIMENSIONS					Mpa
			A	B	C	D	E	
FS-08	1/2"	M8*30	56.3	49.2	40.5	9	18.2	42
FS-12	3/4"	M10*35	71.4	61.8	50.8	11	23.8	
FS-16	1"	M12*45	81	71.4	57.2	11	27.8	
FS-20	1.1/4"	M14*50	95.3	79.2	66.7	11	31.8	
FS-24	1.1/2"	M16*55	112.8	96.8	79.4	13.5	36.6	
FS-32	2"	M20*70	133.4	114	96.8	13.5	44.4	

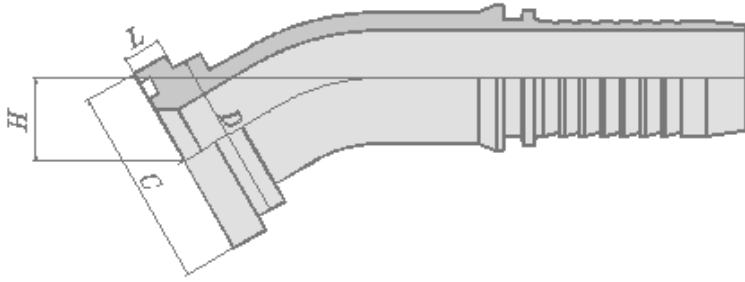
Dimensions are for reference only and subject to change without notice.

Warning for Your Safety

The system designer and user have the sole responsibility to select products suitable for their special application requirements to ensure the proper installation. Operation and maintenance of the product. Application details, material compatibility and product ratings should all be considered in the individual selection. Improper selection or use of products can cause property damage or personal injury. METALOK accepts no liability for any improper selection, installation, operation or maintenance.



TSFTP 30°SAE FLANGE 3000 PSI Hose Fittings



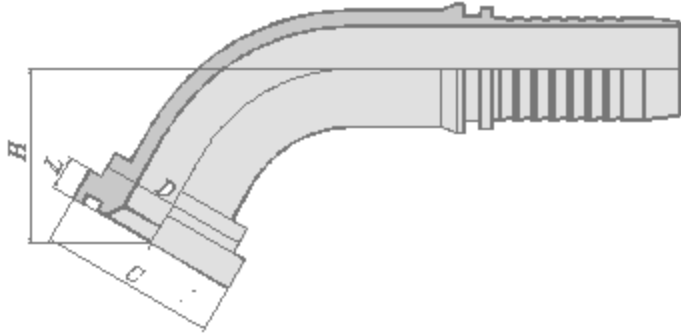
PART NO.	FLANGE SIZE	HOSE BORE		DIMENSIONS			
		DN	DASH	C	H	D	L
MITSFTP-08-08	1/2"	12	8	30.2	14.7	23.9	7
MITSFTP-12-08	3/4"	12	8	38.1	15.7	31.7	7
MITSFTP-12-12	3/4"	20	12	38.1	18.3	31.7	7
MITSFTP-16-12	1"	20	12	44.4	18.3	38	8.2
MITSFTP-16-16	1"	25	16	44.4	18.3	38	8.2
MITSFTP-20-16	1.1/4"	25	16	50.8	18.3	43.2	8.2
MITSFTP-20-20	1.1/4"	32	20	50.8	20.5	43.2	8.2
MITSFTP-24-20	1.1/2"	32	20	60.3	23	50.3	8.2
MITSFTP-24-24	1.1/2"	40	24	60.3	24.8	50.3	8.2
MITSFTP-32-24	2"	40	24	71.4	24.8	62.2	9.8
MITSFTP-32-32	2"	50	32	71.4	28.6	62.2	9.8

Dimensions are for reference only and subject to change without notice.

Warning for Your Safety

The system designer and user have the sole responsibility to select products suitable for their special application requirements to ensure the proper installation. Operation and maintenance of the product. Application details, material compatibility and product ratings should all be considered in the individual selection. Improper selection or use of products can cause property damage or personal injury. METALOK accepts no liability for any improper selection, installation, operation or maintenance.

60°SAE FLANGE 3000 PSI Hose Fittings



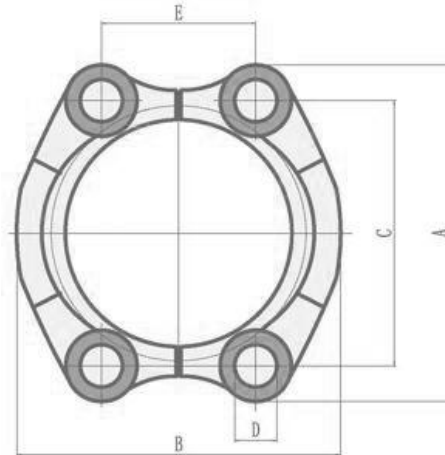
PART NO.	FLANGE SIZE	HOSE BORE		DIMENSIONS			
		DN	DASH	C	H	D	L
MISSFTP-08-08	1/2"	12	8	30.2	31.9	23.9	7
MISSFTP-12-08	3/4"	12	8	38.1	33.6	31.7	7
MISSFTP-12-12	3/4"	20	12	38.1	41.4	31.7	7
MISSFTP-16-12	1"	20	12	44.4	41.4	38	8.2
MISSFTP-16-16	1"	25	16	44.4	43.4	38	8.2
MISSFTP-20-16	1.1/4"	25	16	50.8	43.4	43.2	8.2
MISSFTP-20-20	1.1/4"	32	20	50.8	49.6	43.2	8.2
MISSFTP-24-20	1.1/2"	32	20	60.3	53.9	50.3	8.2
MISSFTP-24-24	1.1/2"	40	24	60.3	60.7	50.3	8.2
MISSFTP-32-24	2"	40	24	71.4	60.7	62.2	9.8
MISSFTP-32-32	2"	50	32	71.4	71.9	62.2	9.8

Dimensions are for reference only and subject to change without notice.

Warning for Your Safety

The system designer and user have the sole responsibility to select products suitable for their special application requirements to ensure the proper installation. Operation and maintenance of the product. Application details, material compatibility and product ratings should all be considered in the individual selection. Improper selection or use of products can cause property damage or personal injury. METALOK accepts no liability for any improper selection, installation, operation or maintenance.

FL-W FLANGE CLAMPS 3000 PSI Hose
Fittings



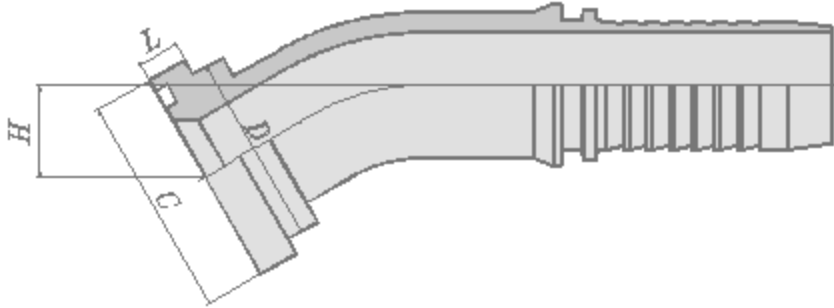
PART NO.	FLANGE SIZE	DIMENSIONS				
		A	B	C	D	E
FL-08W	1/2"	54	46	38.1	9	17.5
FL-12W	3/4"	65.1	52	47.6	11	22.2
FL-16W	1"	69.8	59	52.4	11	26.2
FL-20W	1.1/4"	79.4	73	58.7	11	30.2
FL-200W/A	1.1/4"	79.4	73	58.7	11	30.2
FL-24W	1.1/2"	93.7	83	69.9	13.5	35.7
FL-32W	2"	101.6	97	77.8	13.5	42.9
FL-40W	2.1"	114.6	108	89	13.5	50.8
FL-48W	3"	135	130.6	106.4	16.8	62

Dimensions are for reference only and subject to change without notice.

Warning for Your Safety

The system designer and user have the sole responsibility to select products suitable for their special application requirements to ensure the proper installation. Operation and maintenance of the product. Application details, material compatibility and product ratings should all be considered in the individual selection. Improper selection or use of products can cause property damage or personal injury. METALOK accepts no liability for any improper selection, installation, operation or maintenance.

TSFTP 30°SAE FLANGE 6000 PSI Hose Fittings



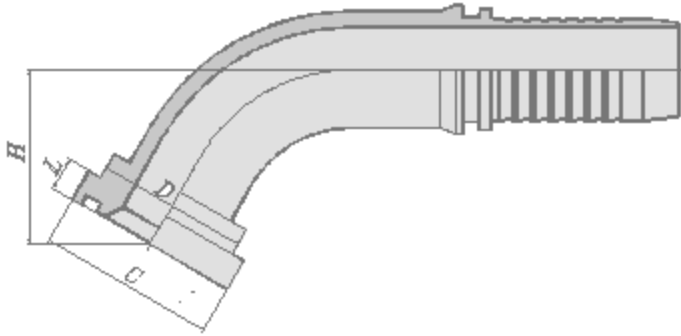
PART NO.	FLANGE SIZE	HOSE BORE		DIMENSIONS			
		DN	DASH	C	H	D	L
MITSFTP-08-08	1/2"	12	8	31.7	15.7	23.9	7.9
MITSFTP-12-12	3/4"	20	12	41.3	19.8	31.7	8.9
MITSFTP-16-16	1"	25	16	47.6	20.8	38	9.6
MITSFTP-20-20	1.1/4"	32	20	54	24	43.6	10.4
MITSFTP-24-20	1.1/2"	32	20	63.5	25.5	50.8	12.7
MITSFTP-24-24	1.1/2"	40	24	63.5	27.3	50.8	12.7
MITSFTP-32-24	2"	40	24	79.4	27.3	66.5	12.7
MITSFTP-32-32	2"	50	32	79.4	31.2	66.5	12.7

Dimensions are for reference only and subject to change without notice.

Warning for Your Safety

The system designer and user have the sole responsibility to select products suitable for their special application requirements to ensure the proper installation. Operation and maintenance of the product. Application details, material compatibility and product ratings should all be considered in the individual selection. Improper selection or use of products can cause property damage or personal injury. METALOK accepts no liability for any improper selection, installation, operation or maintenance.

SSFSP 60° SAE Flange 6000 PSI Hose Fittings



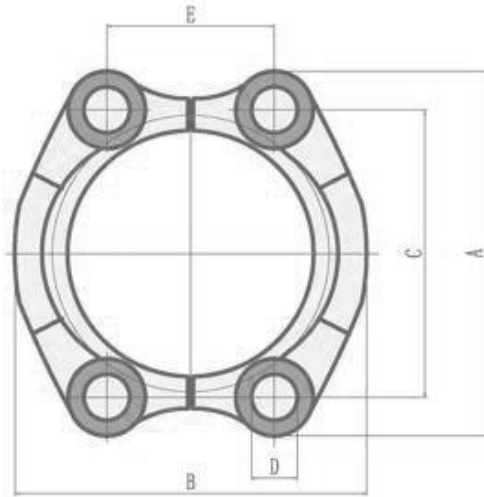
PART NO.	FLANGE SIZE	HOSE BORE		DIMENSIONS			
		DN	DASH	C	H	D	L
MISSFSP-08-08	1/2"	12	8	31.7	33.6	23.9	7.9
MISSFSP-12-12	3/4"	20	12	41.3	44	31.7	8.9
MISSFSP-16-16	1"	25	16	47.6	47.7	38	9.6
MISSFSP-20-20	1.1/4"	32	20	54	55.7	43.6	10.4
MISSFSP-24-20	1.1/2"	32	20	63.5	58.3	50.8	12.7
MISSFSP-24-24	1.1/2"	40	24	63.5	65	50.8	12.7
MISSFSP-32-24	2"	40	24	79.4	65	66.5	12.7
MISSFSP-32-32	2"	50	32	79.4	76.3	66.5	12.7

Dimensions are for reference only and subject to change without notice.

Warning for Your Safety

The system designer and user have the sole responsibility to select products suitable for their special application requirements to ensure the proper installation. Operation and maintenance of the product. Application details, material compatibility and product ratings should all be considered in the individual selection. Improper selection or use of products can cause property damage or personal injury. METALOK accepts no liability for any improper selection, installation, operation or maintenance.

FS-W FLANGE CLAMPS 6000 PSI Hose
Fittings



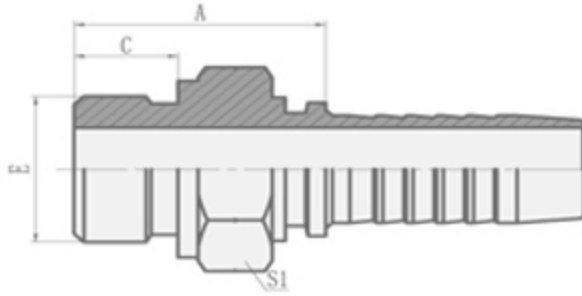
PART NO.	FLANGE SIZE	DIMENSIONS				
		A	B	C	D	E
FS-08W	1/2"	56.3	47	40.5	9	18.2
FS-12W	3/4"	71.4	60	50.8	11	23.8
FS-16W	1"	80	60	57.1	13	27.8
FS-20W	1.1/4"	95.3	77	66.7	15	31.8
FS-24W	1.1/2"	112.7	95	79.4	17	36.5
FS-32W	2"	133.4	114	96.8	21	44.5

Dimensions are for reference only and subject to change without notice.

Warning for Your Safety

The system designer and user have the sole responsibility to select products suitable for their special application requirements to ensure the proper installation. Operation and maintenance of the product. Application details, material compatibility and product ratings should all be considered in the individual selection. Improper selection or use of products can cause property damage or personal injury. METALOK accepts no liability for any improper selection, installation, operation or maintenance.

BSP MALE O-RING SEAL HYDRAULIC HOSE FITTINGS



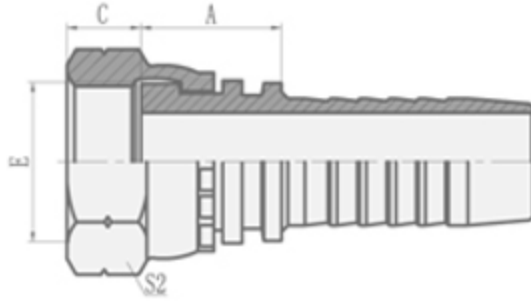
PART NO.	THREAD E	HOSE BORE		O RING	DIMENSIONS		
		DN	DASH		A	C	S1
MIBMORSH-04-04	G1/4"*19	6	4	O111	23.5	11	19
MIBMORSH-04-06	G1/4"*19	10	6	O111	23.5	11	19
MIBMORSH-06-06	G3/8"*19	10	6	O113	26.5	12	22
MIBMORSH-08-04	G1/2"*14	6	4	O115	33.5	14	27
MIBMORSH-08-06	G1/2"*14	10	6	O115	33.5	14	27
MIBMORSH-08-08	G1/2"*14	12	8	O115	34	14	27
MIBMORSH-10-10	G5/8"*14	16	10	O910	36	15.5	30
MIBMORSH-12-10	G3/4"*14	16	10	O119	33.5	15.5	32
MIBMORSH-12-12	G3/4"*14	20	12	O119	38	15.5	32
MIBMORSH-12-16	G3/4"*14	25	16	O119	36	15.5	32
MIBMORSH-16-16	G1"*11	25	16	O217	44.5	18.5	41
MIBMORSH-20-20	G1.1/4"*11	32	20	O222	46	20	50

Dimensions are for reference only and subject to change without notice.

Warning for Your Safety

The system designer and user have the sole responsibility to select products suitable for their special application requirements to ensure the proper installation. Operation and maintenance of the product. Application details, material compatibility and product ratings should all be considered in the individual selection. Improper selection or use of products can cause property damage or personal injury. METALOK accepts no liability for any improper selection, installation, operation or maintenance.

**BSP FEMALE FLAT SEAT HYDRAULIC
HOSE FITTINGS**



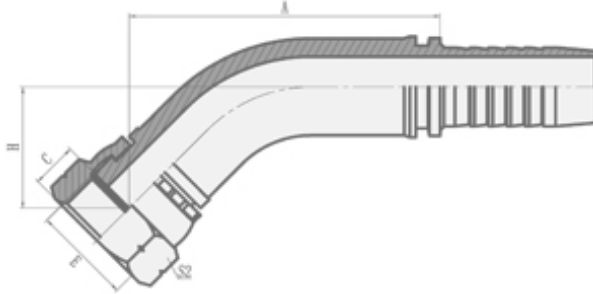
PART NO.	THREAD E	HOSE BORE		DIMENSIONS		
		DN	DASH	A	C	S2
MIBFFSH-04-04	G1/4"*19	6	4	15.5	8	19
MIBFFSH-04-06	G1/4"*19	10	6	15.5	8	19
MIBFFSH-06-04	G3/8"*19	6	4	17	9	22
MIBFFSH-06-05	G3/8"*19	8	5	17	9	22
MIBFFSH-06-06	G3/8"*19	10	6	16.5	9	22
MIBFFSH-06-08	G3/8"*19	12	8	17.5	9	22
MIBFFSH-08-06T	G1/2"*14	10	6	18	10.5	27
MIBFFSH-08-08	G1/2"*14	12	8	18.5	10.5	27
MIBFFSH-10-08	G5/8"*14	12	8	20	12	30
MIBFFSH-10-10	G5/8"*14	16	10	21	12	30
MIBFFSH-12-08T	G3/4"*14	12	8	20.5	13.5	32
MIBFFSH-12-10	G3/4"*14	16	10	21.5	13.5	32
MIBFFSH-12-12	G3/4"*14	20	12	21.5	13.5	32
MIBFFSH-16-12T	G1"*11	20	12	21.5	15.5	41
MIBFFSH-16-16	G1"*11	25	16	23	15.5	41
MIBFFSH-20-20W	G1.1/4"*11	32	20	26	15.5	50
MIBFFSH-24-24W	G1.1/2"*11	40	24	27.5	17.5	55
MIBFFSH-32-32W	G2"*11	50	32	30.5	23	70

Dimensions are for reference only and subject to change without notice.

Warning for Your Safety

The system designer and user have the sole responsibility to select products suitable for their special application requirements to ensure the proper installation. Operation and maintenance of the product. Application details, material compatibility and product ratings should all be considered in the individual selection. Improper selection or use of products can cause property damage or personal injury. METALOK accepts no liability for any improper selection, installation, operation or maintenance.

45 BSP FEMALE FLAT SEAT HYDRAULIC HOSE FITTINGS



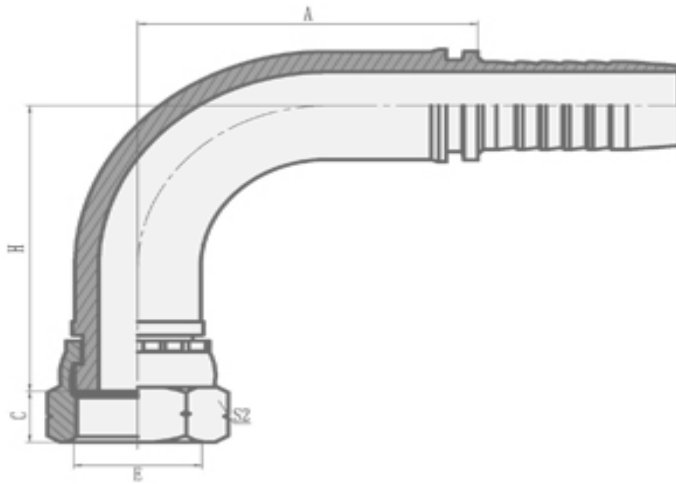
PART NO.	THREAD E	HOSE BORE		DIMENSIONS			
		DN	DASH	A	C	H	S2
MIFBFFSH-04-04	G1/4"*19	6	4	40.9	8	18.8	19
MIFBFFSH-06-06	G3/8"*19	10	6	45.3	9	21	22
MIFBFFSH-08-08	G1/2"*14	12	8	58.9	10.5	24	27
MIFBFFSH-12-12	G3/4"*14	20	12	77.4	13.5	30	32
MIFBFFSH-16-16	G1"*11	25	16	82.7	15.5	31.5	41
MIBFFSH-20-20W	G1.1/4"*11	32	20	97.3	15.5	36.6	50

Dimensions are for reference only and subject to change without notice.

Warning for Your Safety

The system designer and user have the sole responsibility to select products suitable for their special application requirements to ensure the proper installation. Operation and maintenance of the product. Application details, material compatibility and product ratings should all be considered in the individual selection. Improper selection or use of products can cause property damage or personal injury. METALOK accepts no liability for any improper selection, installation, operation or maintenance.

90°BSP FEMALE FLAT SEAT HYDRAULIC HOSE FITTINGS



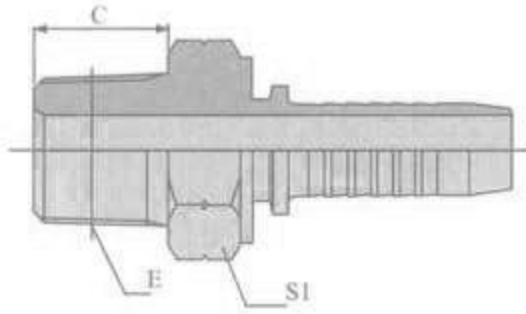
PART NO.	THREAD E	HOSE BORE		DIMENSIONS			
		DN	DASH	A	C	H	S2
MINBFFSH-04-04	G1/4"*19	6	4	30	8	34.5	19
MINBFFSH-06-06	G3/8"*19	10	6	35.3	9	41.3	22
MINBFFSH-08-08	G1/2"*14	12	8	41	10.5	48	27
MINBFFSH-12-12	G3/4"*14	20	12	65.5	13.5	63.5	32
MINBFFSH-16-16	G1"*11	25	16	76.7	15.5	70	41
MINBFFSH-20-20W	G1.1/4"*11	32	20	91.5	15.5	82.5	50
MINBFFSH-24-24W	G1.1/2"*11	40	24	109.4	17.5	98.5	55

Dimensions are for reference only and subject to change without notice.

Warning for Your Safety

The system designer and user have the sole responsibility to select products suitable for their special application requirements to ensure the proper installation. Operation and maintenance of the product. Application details, material compatibility and product ratings should all be considered in the individual selection. Improper selection or use of products can cause property damage or personal injury. METALOK accepts no liability for any improper selection, installation, operation or maintenance.

**BSPT MALE TAPERED HYDRAULIC
HOSE FITTINGS**



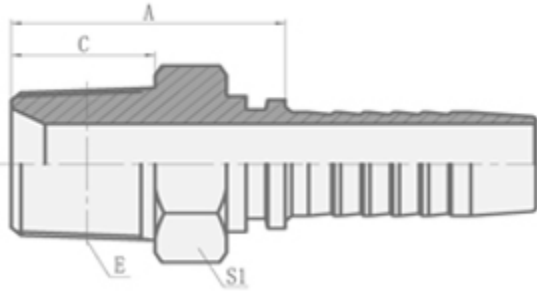
PART NO.	THREAD E	HOSE BORE		DIMENSIONS	
		DN	DASH	C	S1
MIBMTH-02-03	R1/8"X28	6	3	10	12
MIBMTH-02-04	R1/8"-28	6	4	10	12
MIBMTH-04-04	R1/4"-19	6	4	14.5	17
MIBMTH-04-05	R1/4"-19	8	5	14.5	17
MIBMTH-04-06	R1/4"-19	10	6	14.5	17
MIBMTH-06-04	R3/8"-19	6	4	15	19
MIBMTH-06-05	R3/8"-19	8	5	15	19
MIBMTH-06-06	R3/8"-19	10	6	15	19
MIBMTH-06-08	R3/8"-19	12	8	15	22
MIBMTH-08-06	R1/2"-14	10	6	20	22
MIBMTH-08-08	R1/2"-14	12	8	20	22
MIBMTH-08-10	R1/2"-14	16	10	20	24
MIBMTH-12-10	R3/4"-14	16	10	20	30
MIBMTH-12-12	R3/4"-14	20	12	20	30
MIBMTH-12-16	R3/4"-14	25	16	20	32
MIBMTH-16-12	R1"-11	20	12	25.5	36
MIBMTH-16-16	R1"-11	25	16	25.5	36
MIBMTH-16-20	R1"-11	32	20	25.5	41
MIBMTH-20-20	R1.1/4"-11	32	20	26.5	46
MIBMTH-24-20	R1.1/2-11	32	20	26.5	50
MIBMTH-24-24	R1.1/2-11	40	24	26.5	50
MIBMTH-32-32	R2"-11	50	32	30	65

Dimensions are for reference only and subject to change without notice.

Warning for Your Safety

The system designer and user have the sole responsibility to select products suitable for their special application requirements to ensure the proper installation. Operation and maintenance of the product. Application details, material compatibility and product ratings should all be considered in the individual selection. Improper selection or use of products can cause property damage or personal injury. METALOK accepts no liability for any improper selection, installation, operation or maintenance.

BSPT MALE HYDRAULIC HOSE FITTINGS



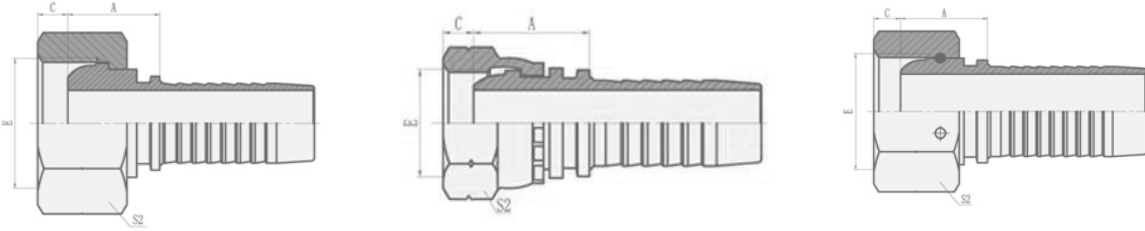
PART NO.	THREAD E	HOSE BORE		DIMENSIONS		
		DN	DASH	A	C	S2
MIBMH-02-03SP	R1/8"*28	5	3	22	10	12
MIBMH-02-04SP	R1/8"*28	6	4	22.5	10	12
MIBMH-04-04SP	R1/4"*19	6	4	27	14.5	14
MIBMH-04-05SP	R1/4"*19	8	5	25	54.4	14
MIBMH-04-06SP	R1/4"*19	10	6	27	14.5	17
MIBMH-06-04SP	R3/8"*19	6	4	27.5	15	17
MIBMH-06-05SP	R3/8"*19	8	5	26.5	15	17
MIBMH-06-06SP	R3/8"*19	10	6	27.5	15	17
MIBMH-06-08SP	R3/8"*19	12	8	30	15	19
MIBMH-08-06SP	R1/2"*14	10	6	34.5	20	22
MIBMH-08-08SP	R1/2"*14	12	8	35	20	22
MIBMH-08-10SP	R1/2"*14	16	10	38	20	22
MIBMH-08-12SP	R1/2"*14	20	12	38	20	27
MIBMH-12-08SP	R3/4"*14	12	8	37	20	27
MIBMH-12-10SP	R3/4"*14	16	10	38	20	27
MIBMH-12-12SP	R3/4"*14	20	12	38.5	20	27
MIBMH-12-16SP	R3/4"*14	25	16	39.5	20	32
MIBMH-16-12SP	R1"*11	20	12	44	25.5	36
MIBMH-16-16SP	R1"*11	25	16	45	25.5	36
MIBMH-20-20SP	R1.1/4"*11	32	20	49.5	26.5	46
MIBMH-24-24SP	R1.1/2"*11	40	24	51.5	26.5	50
MIBMH-32-24SP	R2"*11	40	24	57	30	65
MIBMH-32-32SP	R2"*11	50	32	57	30	65

Dimensions are for reference only and subject to change without notice.

Warning for Your Safety

The system designer and user have the sole responsibility to select products suitable for their special application requirements to ensure the proper installation. Operation and maintenance of the product. Application details, material compatibility and product ratings should all be considered in the individual selection. Improper selection or use of products can cause property damage or personal injury. METALOK accepts no liability for any improper selection, installation, operation or maintenance.

BSP FEMALE MULTISEAL HYDRAULIC HOSE FITTINGS



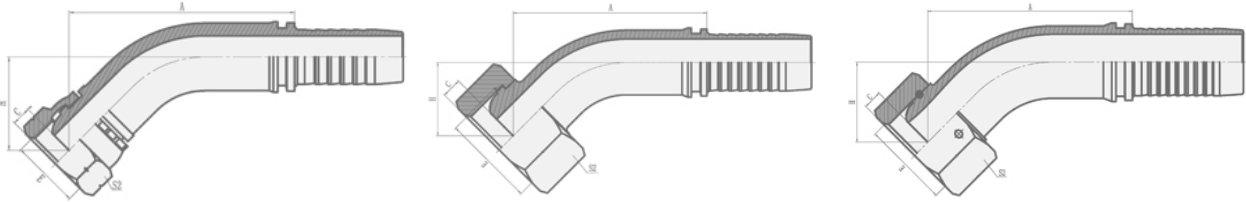
PART NO.	THREAD E	HOSE BORE		DIMENSIONS		
		DN	DASH	A	C	S2
MIBFMH-02-04	G1/8"*28	6	4	19	2	14
MIBFMH-04-03	G1/4"*19	5	3	19	4	19
MIBFMH-04-04	G1/4"*19	6	4	19.5	4	19
MIBFMH-06-05	G3/8"*19	8	5	20	5	22
MIBFMH-06-06	G3/8"*19	10	6	20.5	5	22
MIBFMH-06-08	G3/8"*19	12	8	21	5	22
MIBFMH-08-06T	G1/2"*14	10	6	22.5	6	27
MIBFMH-08-08	G1/2"*14	12	8	23	6	27
MIBFMH-08-10	G1/2"*14	16	10	24	6	27
MIBFMH-10-10	G5/8"*14	16	10	25	8	30
MIBFMH-10-12	G5/8"*14	20	12	25	8	30
MIBFMH-12-08T	G3/4"*14	12	8	25	9.5	32
MIBFMH-12-10	G3/4"*14	16	10	26	9.5	32
MIBFMH-12-12	G3/4"*14	20	12	26	9.5	32
MIBFMH-16-12T	G1"*11	20	12	26.5	11	41
MIBFMH-16-14	G1"*11	22	14	26.5	11	41
MIBFMH-16-16	G1"*11	25	16	28	11	41
MIBFMH-20-16T	G1.1/4"*11	25	16	27.5	11	50
MIBFMH-20-20W	G1.1/4"*11	32	20	31.5	10	50
MIBFMH-24-24W	G1.1/2"*11	40	24	37	11.5	55
MIBFMH-32-32W	G2"*11	50	32	34	15	70

Dimensions are for reference only and subject to change without notice.

Warning for Your Safety

The system designer and user have the sole responsibility to select products suitable for their special application requirements to ensure the proper installation. Operation and maintenance of the product. Application details, material compatibility and product ratings should all be considered in the individual selection. Improper selection or use of products can cause property damage or personal injury. METALOK accepts no liability for any improper selection, installation, operation or maintenance.

BSP FEMALE MULTISEAL HYDRAULIC HOSE FITTINGS



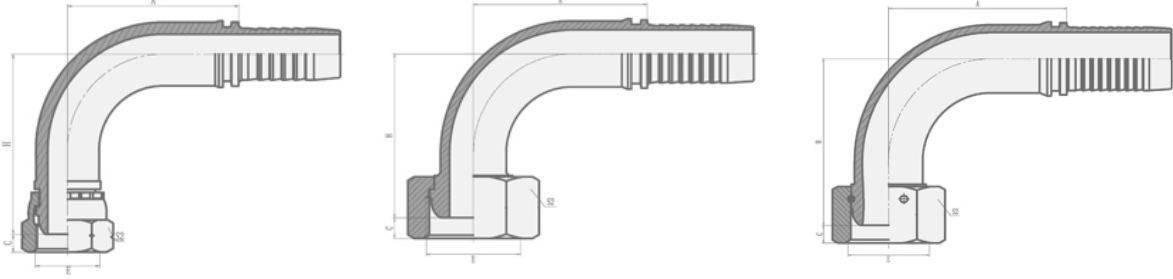
PART NO.	THREAD E	HOSE BORE		DIMENSIONS			
		DN	DASH	A	C	H	S2
MIBFMSHH-02-04	G1/8"*28	6	4	43.7	2	21.6	14
MIBFMSHH-04-03	G1/4"*19	5	3	41.3	4	20.4	19
MIBFMSHH-04-04	G1/4"*19	6	4	43.7	4	21.6	19
MIBFMSHH-06-05	G3/8"*19	8	5	46.2	5	22.9	22
MIBFMSHH-06-06	G3/8"*19	10	6	48.1	5	23.9	22
MIBFMSHH-06-08	G3/8"*19	12	8	60.4	5	25.4	22
MIBFMSHH-08-04T	G1/2"*14	6	4	43.9	6	23.8	27
MIBFMSHH-08-06T	G1/2"*14	10	6	42.5	6	18.2	27
MIBFMSHH-08-08	G1/2"*14	12	8	61.8	6	26.8	27
MIBFMSHH-08-10	G1/2"*14	16	10	73	6	29	27
MIBFMSHH-10-10	G5/8"*14	16	10	73.7	8	28.9	30
MIBFMSHH-10-12	G5/8"*14	20	12	79.8	8	32.5	30
MIBFMSHH-12-08T	G3/4"*14	12	8	63.2	9.5	28.3	32
MIBFMSHH-12-10	G3/4"*14	16	10	70.4	9.5	29.6	32
MIBFMSHH-12-12	G3/4"*14	20	12	80.6	9.5	33.2	32
MIBFMSHH-16-12T	G1"*11	20	12	81.6	11	33.5	41
MIBFMSHH-16-14	G1"*11	22	14	83.3	11	33	41
MIBFMSHH-16-16	G1"*11	25	16	89.2	11	35	41
MIBFMSHH-20-16T	G1.1/4"*11	25	16	91.4	9.1	37.1	50
MIBFMSHH-20-20W	G1.1/4"*11	32	20	102.9	10	41.2	50
MIBFMSHH-24-24W	G1.1/2"*11	40	24	119.8	11.5	49	55
MIBFMSHH-32-32W	G2"*11	50	32	137.4	15	53	70

Dimensions are for reference only and subject to change without notice.

Warning for Your Safety

The system designer and user have the sole responsibility to select products suitable for their special application requirements to ensure the proper installation. Operation and maintenance of the product. Application details, material compatibility and product ratings should all be considered in the individual selection. Improper selection or use of products can cause property damage or personal injury. METALOK accepts no liability for any improper selection, installation, operation or maintenance.

**90°BSP FEMALE MULTISEAL
HYDRAULIC HOSE FITTINGS**



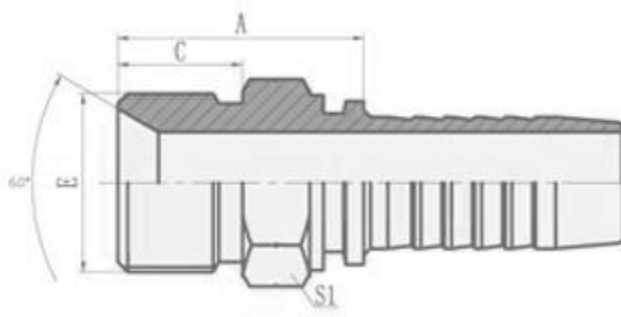
PART NO.	THREAD E	HOSE BORE		DIMENSIONS			
		DN	DASH	A	C	H	S2
MIBFMH-02-04	G1/8"*28	6	4	30	2	38.5	14
MIBFMH-04-03	G1/4"*19	5	3	27	4	35	19
MIBFMH-04-04	G1/4"*19	6	4	30	4	38.5	19
MIBFMH-04-05	G1/4"*19	8	5	33	4	41.5	19
MIBFMH-06-05	G3/8"*19	8	5	33	5	42	22
MIBFMH-06-06	G3/8"*19	10	6	35.3	5	44.8	22
MIBFMH-06-08	G3/8"*19	12	8	41	5	50	22
MIBFMH-08-06T	G1/2"*14	10	6	35.3	6	46.8	27
MIBFMH-08-08	G1/2"*14	12	8	41	6	52	27
MIBFMH-08-10	G1/2"*14	16	10	56.5	6	58	27
MIBFMH-10-10	G5/8"*14	16	10	56.5	8	57.5	30
MIBFMH-10-12	G5/8"*14	20	12	65.4	8	67	30
MIBFMH-12-08T	G3/4"*14	12	8	41	9.5	52	32
MIBFMH-12-10	G3/4"*14	16	10	56.5	9.5	58.5	32
MIBFMH-12-12	G3/4"*14	20	12	65.5	9.5	68	32
MIBFMH-16-12T	G1"*11	20	12	66.2	11	68.5	41
MIBFMH-16-14	G1"*11	22	14	71.2	11	69.5	41
MIBFMH-16-16	G1"*11	25	16	76.7	11	75	41
MIBFMH-20-16T	G1.1/4"*11	25	16	76.7	10	78	50
MIBFMH-20-20W	G1.1/4"*11	32	20	92.3	10	85.3	50
MIBFMH-24-24W	G1.1/2"*11	40	24	109.4	11.5	108	55
MIBFMH-32-32W	G2"*11	50	32	133.1	15	123.8	70

Dimensions are for reference only and subject to change without notice.

Warning for Your Safety

The system designer and user have the sole responsibility to select products suitable for their special application requirements to ensure the proper installation. Operation and maintenance of the product. Application details, material compatibility and product ratings should all be considered in the individual selection. Improper selection or use of products can cause property damage or personal injury. METALOK accepts no liability for any improper selection, installation, operation or maintenance.

BSP MALE 60° CONE SEAT HYDRAULIC HOSE



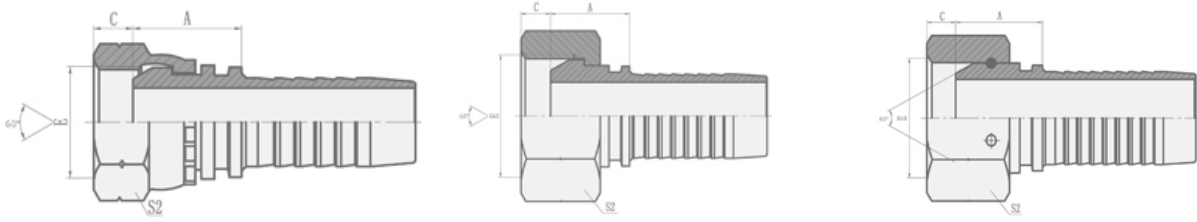
PART NO.	THREAD E	HOSE BORE		DIMENSIONS		
		DN	DASH	A	C	S2
MIBMSCSH-02-03	G1/8"*28	5	3	22	10	12
MIBMSCSH-04-04	G1/4"*19	6	4	24.5	12	14
MIBMSCSH-06-05	G3/8"*19	8	5	26	13.5	17
MIBMSCSH-06-06	G3/8"*19	10	6	27.5	13.5	17
MIBMSCSH-06-08	G3/8"*19	12	8	26.5	13.5	19
MIBMSCSH-08-06	G1/2"*14	10	6	30.5	16	22
MIBMSCSH-08-08	G1/2"*14	12	8	31	16	22
MIBMSCSH-10-08	G5/8"*14	12	8	32.5	17.5	24
MIBMSCSH-10-10	G5/8"*14	16	10	33.5	17.5	24
MIBMSCSH-12-08	G3/4"*14	12	8	35.5	18.5	27
MIBMSCSH-12-10	G3/4"*14	16	10	37	18.5	27
MIBMSCSH-12-12	G3/4"*14	20	12	36.5	18.5	27
MIBMSCSH-16-12	G1"*11	20	12	40.5	20.5	36
MIBMSCSH-16-16	G1"*11	25	16	41.5	20.5	36
MIBMSCSH-20-16	G1.1/4"*11	25	16	43.5	20.5	46
MIBMSCSH-20-20	G1.1/4"*11	32	20	44.5	20.5	46
MIBMSCSH-24-20	G1.1/2"*11	32	20	49	23	50
MIBMSCSH-24-24	G1.1/2"*11	40	24	46	23	50
MIBMSCSH-32-32	G2"*11	50	32	53.5	25.5	65

Dimensions are for reference only and subject to change without notice.

Warning for Your Safety

The system designer and user have the sole responsibility to select products suitable for their special application requirements to ensure the proper installation. Operation and maintenance of the product. Application details, material compatibility and product ratings should all be considered in the individual selection. Improper selection or use of products can cause property damage or personal injury. METALOK accepts no liability for any improper selection, installation, operation or maintenance.

BSP FEMALE 60 CONE HYDRAULIC HOSE FITTINGS



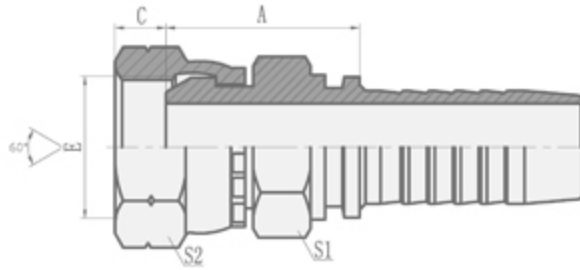
PART NO.	THREAD E	HOSE BORE		DIMENSIONS		
		DN	DASH	A	C	S2
MIBFSCH-02-03	G1/8"*28	5	3	15	5.5	14
MIBFSCH-02-04	G1/8"*28	6	4	15	5.5	14
MIBFSCH-04-03	G1/4"*19	5	3	17	5.5	19
MIBFSCH-04-04	G1/4"*19	6	4	18	5.5	19
MIBFSCH-04-05	G1/4"*19	8	5	18	5.5	19
MIBFSCH-04-06	G1/4"*19	10	6	18	5.5	19
MIBFSCH-06-04	G3/8"*19	6	4	19	6.3	22
MIBFSCH-06-05	G3/8"*19	8	5	19	6.3	22
MIBFSCH-06-06	G3/8"*19	10	6	19.5	6.3	22
MIBFSCH-06-08	G3/8"*19	12	8	19.5	6.3	22
MIBFSCH-08-06T	G1/2"*14	10	6	21	7.5	27
MIBFSCH-08-08	G1/2"*14	12	8	21.5	7.5	27
MIBFSCH-10-08	G5/8"*14	12	8	22	9.5	30
MIBFSCH-10-10	G5/8"*14	16	10	23.5	9.5	30
MIBFSCH-12-08T	G3/4"*14	12	8	22	10.9	32
MIBFSCH-12-10	G3/4"*14	16	10	24	10.9	32
MIBFSCH-12-12	G3/4"*14	20	12	24	10.9	32
MIBFSCH-16-12T	G1"*11	20	12	24	11.7	41
MIBFSCH-16-14	G1"*11	22	14	26	11.7	41
MIBFSCH-16-16	G1"*11	25	16	27	11.7	41
MIBFSCH-20-16T	G1.1/4"*11	25	16	27.5	11	50
MIBFSCH-20-20W	G1.1/4"*11	32	20	30.5	11	50
MIBFSCH-24-20T	G1.1/2"*11	32	20	32	13	55
MIBFSCH-24-24W	G1.1/2"*11	40	24	32	13	55
MIBFSCH-32-24T	G2"*11	40	24	30	16	70
MIBFSCH-32-32W	G2"*11	50	32	31.9	16	70

Dimensions are for reference only and subject to change without notice.

Warning for Your Safety

The system designer and user have the sole responsibility to select products suitable for their special application requirements to ensure the proper installation. Operation and maintenance of the product. Application details, material compatibility and product ratings should all be considered in the individual selection. Improper selection or use of products can cause property damage or personal injury. METALOK accepts no liability for any improper selection, installation, operation or maintenance.

BSP FEMALE 60 CONE DOUBLE HEXAGON HYDRAULIC HOSE FITTINGS



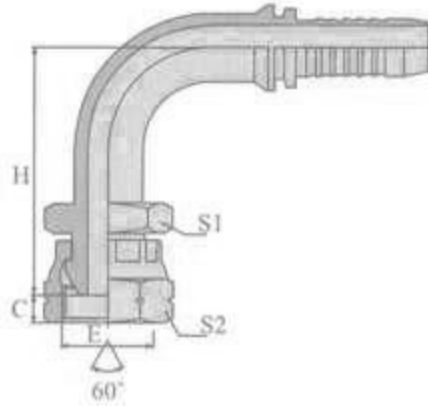
PART NO.	THREAD E	HOSE BORE		DIMENSIONS			
		DN	DASH	A	C	S1	S2
MIBFSCDHH-04-04	G1/4"*19	6	4	23.5	5.5	19	19
MIBFSCDHH-06-06	G3/8"*19	10	6	26.5	6.3	22	22
MIBFSCDHH-08-08	G1/2"*14	12	8	31	7.5	27	27
MIBFSCDHH-10-08	G5/8"*14	12	8	32	9.5	30	30
MIBFSCDHH-12-08	G3/4"*14	12	8	33	10.9	32	32
MIBFSCDHH-12-12	G3/4"*14	20	12	34	10.9	32	32
MIBFSCDHH-16-16	G1"*11	25	16	35.5	11.7	41	41
MIBFSCDHH-20-20	G1.1/4"*11	32	20	43.5	11	50	50

Dimensions are for reference only and subject to change without notice.

Warning for Your Safety

The system designer and user have the sole responsibility to select products suitable for their special application requirements to ensure the proper installation. Operation and maintenance of the product. Application details, material compatibility and product ratings should all be considered in the individual selection. Improper selection or use of products can cause property damage or personal injury. METALOK accepts no liability for any improper selection, installation, operation or maintenance.

**90°BSP FEMALE 60°CONE DOUBLE
HEXAGON HYDRAULIC HOSE FITTINGS**



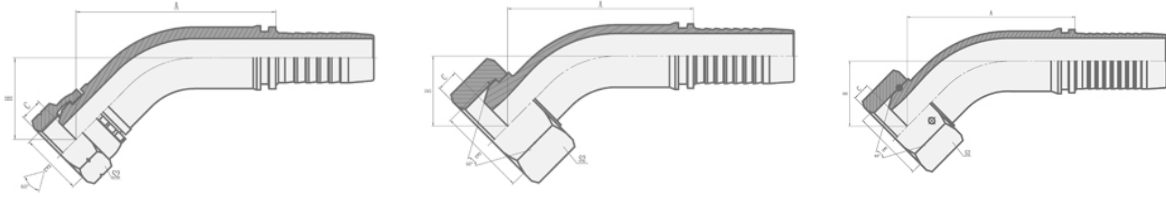
PART NO.	THREAD E	HOSE BORE			DIMENSIONS		
		DN	DASH	C	S1	S2	H
MIBFSCDHH-04-04	G1/4"-19	6	4	5.5	19	19	40.5
MIBFSCDHH-06-06	G3/8"-19	10	6	6.3	22	22	49
MIBFSCDHH-08-08	G1/2"-14	12	8	7.5	27	27	58
MIBFSCDHH-12-12	G3/4"-14	20	12	10.9	32	32	74
MIBFSCDHH-16-16	G1"-11	25	16	11.7	41	41	82.8

Dimensions are for reference only and subject to change without notice.

Warning for Your Safety

The system designer and user have the sole responsibility to select products suitable for their special application requirements to ensure the proper installation. Operation and maintenance of the product. Application details, material compatibility and product ratings should all be considered in the individual selection. Improper selection or use of products can cause property damage or personal injury. METALOK accepts no liability for any improper selection, installation, operation or maintenance.

**45°BSP FEMALE 60°CONE HYDRAULIC
HOSE FITTINGS**



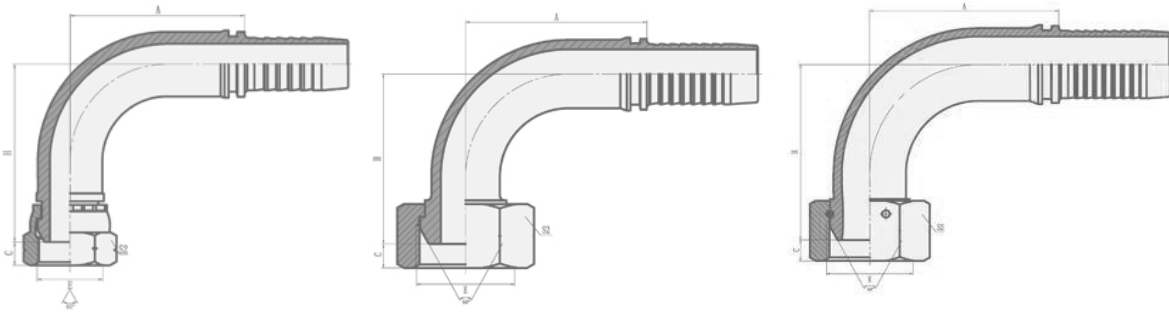
PART NO.	THREAD E	HOSE BORE		DIMENSIONS			
		DN	DASH	A	C	H	S2
MIBFSCH-04-04	G1/4"*19	6	4	42.3	5.5	20.2	19
MIBFSCH-06-04	G3/8"*19	6	4	43.2	6.3	21	22
MIBFSCH-06-05	G3/8"*19	8	5	45.3	6.3	22	22
MIBFSCH-06-06	G3/8"*19	10	6	46.9	6.3	22.6	22
MIBFSCH-08-06T	G1/2"*14	10	6	47.1	7.5	23.9	27
MIBFSCH-08-08	G1/2"*14	12	8	61.1	7.5	26.1	27
MIBFSCH-10-08	G5/8"*14	12	8	61.4	9.5	26.5	30
MIBFSCH-10-10	G5/8"*14	16	10	72.6	9.5	27.8	30
MIBFSCH-12-08T	G3/4"*14	12	8	61.8	10.9	26.9	32
MIBFSCH-12-10	G3/4"*14	16	10	73	10.9	28.2	32
MIBFSCH-12-12	G3/4"*14	20	12	79.2	10.9	31.8	32
MIBFSCH-16-12T	G1"*11	20	12	80.8	11.7	33.4	41
MIBFSCH-16-16	G1"*11	25	16	99.4	11.7	34.2	41
MIBFSCH-20-16T	G1.1/4"*11	25	16	85.3	11	31.1	50
MIBFSCH-20-20W	G1.1/4"*11	32	20	98.8	11	38	50
MIBFSCH-24-24W	G1.1/2"*11	40	24	116.8	13	45.5	55
MIBFSCH-32-32W	G2"*11	50	32	135.7	13	52.7	70

Dimensions are for reference only and subject to change without notice.

Warning for Your Safety

The system designer and user have the sole responsibility to select products suitable for their special application requirements to ensure the proper installation. Operation and maintenance of the product. Application details, material compatibility and product ratings should all be considered in the individual selection. Improper selection or use of products can cause property damage or personal injury. METALOK accepts no liability for any improper selection, installation, operation or maintenance.

**90 BSP FEMALE 60 CONE HYDRAULIC
HOSE FITTINGS**



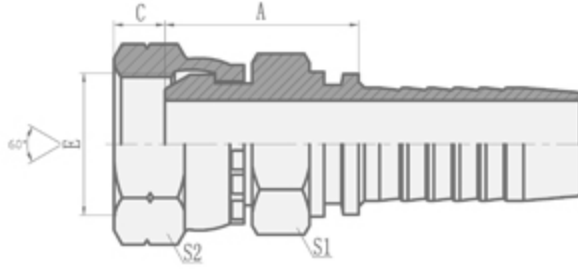
PART NO.	THREAD E	HOSE BORE		DIMENSIONS			
		DN	DASH	A	C	H	S2
MIBFSCH-02-03	G1/8"*28	5	3	26.5	5.5	31.5	14
MIBFSCH-02-04	G1/8"*28	6	4	30	5.5	34.5	14
MIBFSCH-04-03	G1/4"*19	5	3	26.5	5.5	33.5	19
MIBFSCH-04-04	G1/4"*19	6	4	30	5.5	36.5	19
MIBFSCH-04-05	G1/4"*19	8	5	33	5.5	39.5	19
MIBFSCH-04-06	G1/4"*19	10	6	30	5.5	36.5	19
MIBFSCH-06-04	G3/8"*19	6	4	30	6.3	37.7	22
MIBFSCH-06-05	G3/8"*19	8	5	33	6.3	40.7	22
MIBFSCH-06-06	G3/8"*19	10	6	35.3	6.3	43	22
MIBFSCH-08-06T	G1/2"*14	10	6	35.3	7	43.3	27
MIBFSCH-08-08	G1/2"*14	12	8	41	7.5	51	27
MIBFSCH-08-10	G1/2"*14	16	10	56.5	7.5	55.5	27
MIBFSCH-10-08	G5/8"*14	12	8	41	9.5	51.5	30
MIBFSCH-10-10	G5/8"*14	16	10	56.5	9.5	56	30
MIBFSCH-12-08T	G3/4"*14	12	8	41	10.9	52.1	32
MIBFSCH-12-10	G3/4"*14	16	10	56.5	10.9	56.6	32
MIBFSCH-12-12	G3/4"*14	20	12	65.5	10.9	66	32
MIBFSCH-16-12T	G1"*11	20	12	65.5	11.7	68.3	41
MIBFSCH-16-14	G1"*11	22	14	71.2	11.7	69.3	41
MIBFSCH-16-16	G1"*11	25	16	76.7	11.7	73.8	41
MIBFSCH-20-16T	G1.1/4"*11	25	16	78	11	69.5	50
MIBFSCH-20-20W	G1.1/4"*11	32	20	91.5	11	84.3	50
MIBFSCH-24-24W	G1.1/2"*11	40	24	109.4	13	103	55
MIBFSCH-32-32W	G2"*11	50	32	131.8	16	123.3	70

Dimensions are for reference only and subject to change without notice.

Warning for Your Safety

The system designer and user have the sole responsibility to select products suitable for their special application requirements to ensure the proper installation. Operation and maintenance of the product. Application details, material compatibility and product ratings should all be considered in the individual selection. Improper selection or use of products can cause property damage or personal injury. METALOK accepts no liability for any improper selection, installation, operation or maintenance.

**BSP FEMALE 60 CONE DOUBLE HEXAGON
HYDRAULIC HOSE FITTINGS**



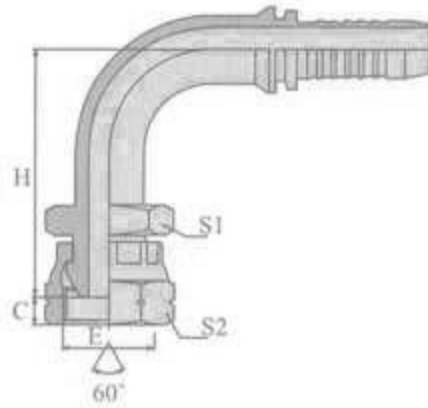
PART NO.	THREAD E	HOSE BORE		DIMENSIONS			
		DN	DASH	A	C	S1	S2
MIBFSCDHH-04-04	G1/4"×19	6	4	23.5	5.5	19	19
MIBFSCDHH-06-06	G3/8"×19	10	6	26.5	6.3	22	22
MIBFSCDHH-08-08	G1/2"×14	12	8	31	7.5	27	27
MIBFSCDHH-10-08	G5/8"×14	12	8	32	9.5	30	30
MIBFSCDHH-12-08	G3/4"×14	12	8	33	10.9	32	32
MIBFSCDHH-12-12	G3/4"×14	20	12	34	10.9	32	32
MIBFSCDHH-16-16	G1"×11	25	16	35.5	11.7	41	41
MIBFSCDHH-20-20	G1.1/4"×11	32	20	43.5	11	50	50

Dimensions are for reference only and subject to change without notice.

Warning for Your Safety

The system designer and user have the sole responsibility to select products suitable for their special application requirements to ensure the proper installation. Operation and maintenance of the product. Application details, material compatibility and product ratings should all be considered in the individual selection. Improper selection or use of products can cause property damage or personal injury. METALOK accepts no liability for any improper selection, installation, operation or maintenance.

90° BSP FEMALE 60° Cone Double Hexagon Hydraulic Hose Fittings



PART NO.	THREAD E	HOSE BORE		DIMENSIONS			
		DN	DASH	C	S1	S2	H
MIBFSCDHH-04-04	G1/4"-19	6	4	5.5	19	19	40.5
MIBFSCDHH-06-06	G3/8"-19	10	6	6.3	22	22	49
MIBFSCDHH-08-08	G1/2"-14	12	8	7.5	27	27	58
MIBFSCDHH-12-12	G3/4"-14	20	12	10.9	32	32	74
MIBFSCDHH-16-16	G1"-11	25	16	11.7	41	41	82.8

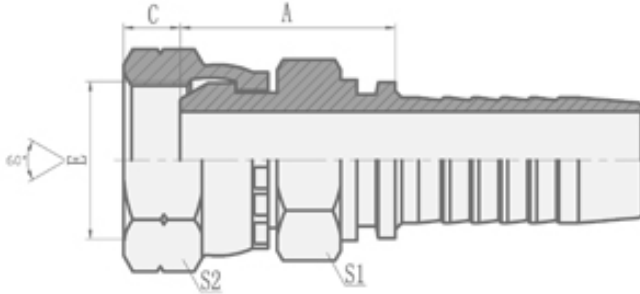
Dimensions are for reference only and subject to change without notice.

Warning for Your Safety

The system designer and user have the sole responsibility to select products suitable for their special application requirements to ensure the proper installation. Operation and maintenance of the product. Application details, material compatibility and product ratings should all be considered in the individual selection. Improper selection or use of products can cause property damage or personal injury. METALOK accepts no liability for any improper selection, installation, operation or maintenance.



BSP FEMALE 60 CONE DOUBLE HEXAGON
HYDRAULIC HOSE FITTINGS



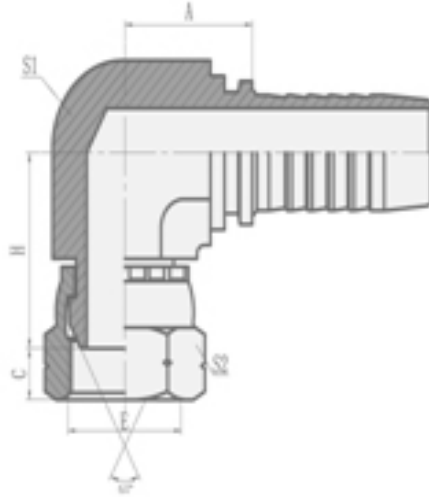
PART NO.	THREAD E	HOSE BORE		DIMENSIONS			
		DN	DASH	A	C	S1	S2
MIBFSCDHH-04-04SM	G1/4"*19	6	4	23	5.5	14	19
MIBFSCDHH-06-06SM	G3/8"*19	10	6	25	6.3	17	22
MIBFSCDHH-08-08SM	G1/2"*14	12	8	28.5	7.5	22	27
MIBFSCDHH-10-08SM	G5/8"*14	12	8	30	9.5	22	30
MIBFSCDHH-12-08SM	G3/4"*14	12	8	32.1	10.9	27	32
MIBFSCDHH-12-12SM	G3/4"*14	20	12	32.5	10.9	27	32
MIBFSCDHH-16-16SM	G1"*11	25	16	36.3	11.7	32	41
MIBFSCDHH-20-20SM	G1.1/4"*11	32	20	41.5	11	41	50

Dimensions are for reference only and subject to change without notice.

Warning for Your Safety

The system designer and user have the sole responsibility to select products suitable for their special application requirements to ensure the proper installation. Operation and maintenance of the product. Application details, material compatibility and product ratings should all be considered in the individual selection. Improper selection or use of products can cause property damage or personal injury. METALOK accepts no liability for any improper selection, installation, operation or maintenance.

**BSP FEMALE 60 CONE DOUBLE HEXAGON
HYDRAULIC HOSE FITTINGS**



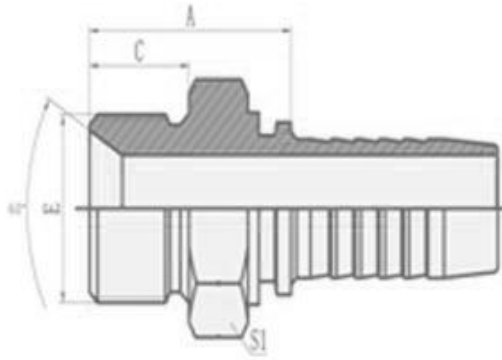
PART NO.	THREAD E	HOSE BORE		DIMENSIONS				
		DN	DASH	A	C	H	S1	S2
MIBFSCDHH-04-04	G1/4"*19	6	4	17.5	5.5	18.5	11	19
MIBFSCDHH-06-04	G3/8"*19	6	4	20	6.3	23	16	22
MIBFSCDHH-06-05	G3/8"*19	8	5	20	6.3	23	16	22
MIBFSCDHH-06-06	G3/8"*19	10	6	20	6.3	24	16	22
MIBFSCDHH-08-06	G1/2"*14	10	6	23	7.5	26.5	19	27
MIBFSCDHH-08-08	G1/2"*14	12	8	23.5	7.5	28.5	19	27
MIBFSCDHH-10-10	G5/8"*14	16	10	25	9.5	29.2	22	30
MIBFSCDHH-12-12	G3/4"*14	20	12	27.5	10.9	33	27	32
MIBFSCDHH-16-16	G1"*11	25	16	32.5	11.7	38.1	33	41

Dimensions are for reference only and subject to change without notice.

Warning for Your Safety

The system designer and user have the sole responsibility to select products suitable for their special application requirements to ensure the proper installation. Operation and maintenance of the product. Application details, material compatibility and product ratings should all be considered in the individual selection. Improper selection or use of products can cause property damage or personal injury. METALOK accepts no liability for any improper selection, installation, operation or maintenance.

**BSP MALE DOUBLE USE FOR 60 CONE SEAT
HYDRDAULIC HOSE FITTINGS**



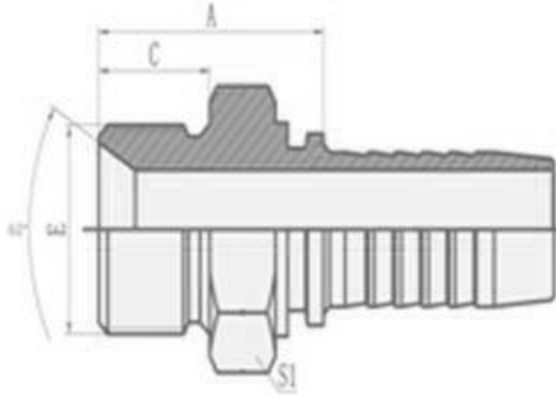
PART NO.	THREAD E	HOSE BORE		DIMENSIONS		
		DN	DASH	A	C	S2
MIBMDUFSCS-02-03	G1/8"*28	5	3	22	10	12
MIBMDUFSCS-04-04	G1/4"*19	6	4	24.5	12	14
MIBMDUFSCS-06-05	G3/8"*19	8	5	26	13.5	17
MIBMDUFSCS-06-06	G3/8"*19	10	6	27.5	13.5	17
MIBMDUFSCS-06-08	G3/8"*19	12	8	26.5	13.5	19
MIBMDUFSCS-06-08	G1/2"*14	10	8	30.5	16	22
MIBMDUFSCS-08-08	G1/2"*14	12	8	31	16	22
MIBMDUFSCS-10-08	G5/8"*14	12	8	32.5	17.5	24
MIBMDUFSCS-10-10	G5/8"*14	16	10	33.5	17.5	24
MIBMDUFSCS-12-08	G3/4"*14	12	8	35.5	18.5	27
MIBMDUFSCS-12-10	G3/4"*14	16	10	37	18.5	27
MIBMDUFSCS-12-12	G3/4"*14	20	12	36.5	18.5	27
MIBMDUFSCS-16-12	G1"*11	20	12	40.5	20.5	36
MIBMDUFSCS-16-16	G1"*11	25	16	41.5	20.5	36
MIBMDUFSCS-20-16	G1.1/4"*11	25	16	43.5	20.5	46
MIBMDUFSCS-20-20	G1.1/4"*11	32	20	44.5	20.5	46
MIBMDUFSCS-24-20	G1.1/2"*11	32	20	49	23	50
MIBMDUFSCS-24-24	G1.1/2"*11	40	24	46	23	50
MIBMDUFSCS-32-32	G2"*11	50	32	53.5	25.5	65

Dimensions are for reference only and subject to change without notice.

Warning for Your Safety

The system designer and user have the sole responsibility to select products suitable for their special application requirements to ensure the proper installation. Operation and maintenance of the product. Application details, material compatibility and product ratings should all be considered in the individual selection. Improper selection or use of products can cause property damage or personal injury. METALOK accepts no liability for any improper selection, installation, operation or maintenance.

BSP MALE DOUBLE USE FOR 60 CONE SEAT HYDRAULIC HOSE FITTINGS



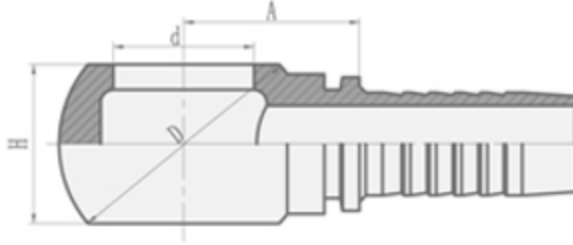
PART NO.	THREAD E	HOSE BORE		DIMENSIONS		
		DN	DASH	A	C	S2
MIBMDUFSCS-02-03	G1/8"*28	5	3	22	10	12
MIBMDUFSCS-04-04	G1/4"*19	6	4	24.5	12	14
MIBMDUFSCS-06-05	G3/8"*19	8	5	26	13.5	17
MIBMDUFSCS-06-06	G3/8"*19	10	6	27.5	13.5	17
MIBMDUFSCS-06-08	G3/8"*19	12	8	26.5	13.5	19
MIBMDUFSCS-08-06	G1/2"*14	10	6	30.5	16	22
MIBMDUFSCS-08-08	G1/2"*14	12	8	31	16	22
MIBMDUFSCS-10-08	G5/8"*14	12	8	32.5	17.5	24
MIBMDUFSCS-10-10	G5/8"*14	16	10	33.5	17.5	24
MIBMDUFSCS-12-08	G3/4"*14	12	8	35.5	18.5	27
MIBMDUFSCS-12-10	G3/4"*14	16	10	37	18.5	27
MIBMDUFSCS-12-12	G3/4"*14	20	12	36.5	18.5	27
MIBMDUFSCS-16-12	G1"*11	20	12	40.5	20.5	36
MIBMDUFSCS-16-16	G1"*11	25	16	41.5	20.5	36
MIBMDUFSCS-20-16	G1.1/4"*11	25	16	43.5	20.5	46
MIBMDUFSCS-20-20	G1.1/4"*11	32	20	44.5	20.5	46
MIBMDUFSCS-24-20	G1.1/2"*11	32	20	49	23	50
MIBMDUFSCS-24-24	G1.1/2"*11	40	24	46	23	50
MIBMDUFSCS-32-32	G2"*11	50	32	53.5	25.5	65

Dimensions are for reference only and subject to change without notice.

Warning for Your Safety

The system designer and user have the sole responsibility to select products suitable for their special application requirements to ensure the proper installation. Operation and maintenance of the product. Application details, material compatibility and product ratings should all be considered in the individual selection. Improper selection or use of products can cause property damage or personal injury. METALOK accepts no liability for any improper selection, installation, operation or maintenance.

BSP BANJO HYDRAULIC HOSE FITTINGS



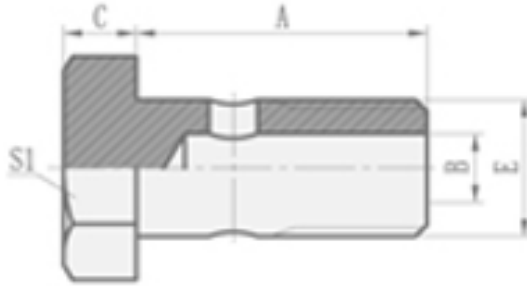
PART NO.	THREAD E	HOSE BORE		DIMENSIONS			
		DN	DASH	A	B	D	H
MIBBH-02-03	G1/8"*28	5	3	18	9.9	22	16
MIBBH-02-04	G1/8"*28	6	4	18.5	9.9	22	16
MIBBH-04-03	G1/4"*19	5	3	19	13.3	24	15
MIBBH-04-04	G1/4"*19	6	4	19.5	13.3	24	15
MIBBH-04-05	G1/4"*19	8	5	19.5	13.3	24	15
MIBBH-04-06	G1/4"*19	10	6	19.5	13.3	24	15
MIBBH-06-04	G3/8"*19	6	4	22	16.7	29	20
MIBBH-06-05	G3/8"*19	8	5	22	16.7	29	20
MIBBH-06-06	G3/8"*19	10	6	22	16.7	29	20
MIBBH-06-08	G3/8"*19	12	8	23	16.7	29	20
MIBBH-08-05	G1/2"*14	8	5	27.5	21	38	25
MIBBH-08-06	G1/2"*14	10	6	27.5	21	38	25
MIBBH-08-08	G1/2"*14	12	8	28	21	38	25
MIBBH-08-10	G1/2"*14	16	10	29	21	38	25
MIBBH-10-10	G5/8"*14	16	10	28	23	40	24
MIBBH-12-10	G3/4"*14	16	10	32	26.5	448	31
MIBBH-12-12	G3/4"*14	20	12	32	26.5	448	31
MIBBH-16-08	G1"*11	12	8	40	33.3	60	42
MIBBH-16-12	G1"*11	20	12	40	33.3	60	42
MIBBH-16-16	G1"*11	25	16	41	33.3	60	42

Dimensions are for reference only and subject to change without notice.

Warning for Your Safety

The system designer and user have the sole responsibility to select products suitable for their special application requirements to ensure the proper installation. Operation and maintenance of the product. Application details, material compatibility and product ratings should all be considered in the individual selection. Improper selection or use of products can cause property damage or personal injury. METALOK accepts no liability for any improper selection, installation, operation or maintenance.

BSP Bolt Hydraulic Hose Fittings



PART NO.	THREAD E	DIMENSIONS			
		A	B	C	S1
MIBBHH-02	G1/8"*28	29.5	4.8	4.8	14
MIBBHH-04	G1/4"*19	28.5	6	6	19
MIBBHH-06	G3/8"*19	38.5	9	7	22
MIBBHH-08	G1/2"*14	44	13	8.5	27
MIBBHH-10	G5/8"*14	48.5	15	10	30
MIBBHH-12	G3/4"*14	56	18	10	32
MIBBHH-16	G1"*11	68.5	22	13	41

Dimensions are for reference only and subject to change without notice.

Warning for Your Safety

The system designer and user have the sole responsibility to select products suitable for their special application requirements to ensure the proper installation. Operation and maintenance of the product. Application details, material compatibility and product ratings should all be considered in the individual selection. Improper selection or use of products can cause property damage or personal injury. METALOK accepts no liability for any improper selection, installation, operation or maintenance.



Our Total customer satisfaction results in A True Partnership.



CUSTOMER BASE

More than three decades of experience, expertise and dedication ensures world class quality and excellent performance of METALOK products resulted in establishing worldwide customer base.

GRATITUDE

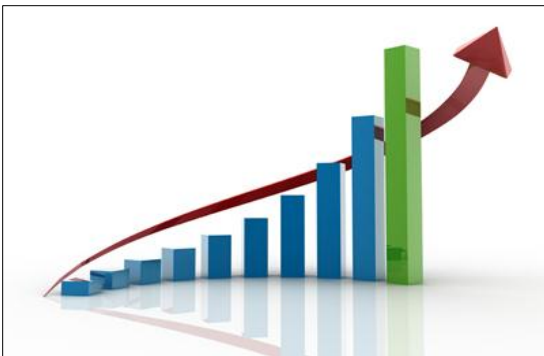
We at METALOK always appreciated and thankful to all our Valued Customers for undaunted support and faith reposed on us which motivates us to perform better all the time

EDGE

Our in-house Design, manufacturing and Testing facilities only emphasizes that METALOK Fitting and Valves are one of the Best, versatile, safe, compatible, easy for installation and operation in Instrumentation, Hydraulic and Industrial applications.

OUR GOAL

Our company's vision is to understand our customers requirements and meet them fully to their entire satisfaction by way of high quality, timely delivery, competitive price and prompt service.



www.metalokindustries.com



METALOK INDUSTRIES
(AN ISO 9001: 2008 Certified Company)

Regd Office & Unit : G-16 & 21, Nikisha Industrial Estate , Near Pandurang wadi, Western Express Highway, Mira Road East, Thane 401 107.



+91 22 28453235
+91 9869552950 (Hassan Shaikh)
+91 9892277161 (Rehan Shaikh)



metalokindustries@gmail.com
sales@metalokindustries.com
metalok@live.com



www.metalokindustries.com

METALOK INDUSTRIES

sales@metalokindustries.com



M
E
T
A
L
O
K

I
N
D
U
S
T
R
I
E
S