



METALOK

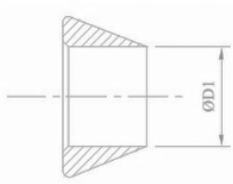
BRASS COMPRESSION TUBE FITTINGS SINGLE FERRULE AND DOUBLE FERRULE



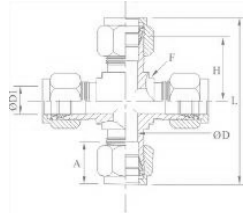
Dimensions are for reference only and subject to change without notice.

Warning for Your Safety

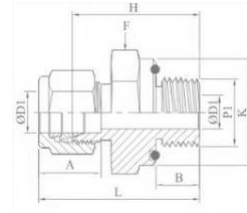
The system designer and user have the sole responsibility to select products suitable for their special application requirements to ensure the proper installation. Operation and maintenance of the product. Application details, material compatibility and product ratings should all be considered in the individual selection. Improper selection or use of products can cause property damage or personal injury. METALOK accepts no liability for any improper selection, installation, operation or maintenance.



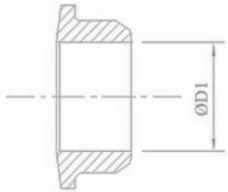
FRONT FERRULE



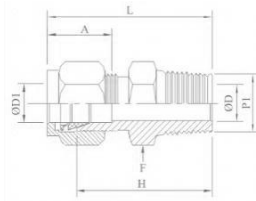
UNION CROSS



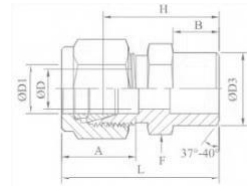
**MALE CONNECTOR O-EAL
MALE UNF THREAD**



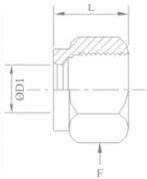
BACK FERRULE



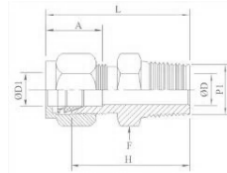
MALE CONNECTOR



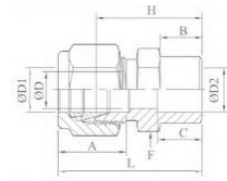
**MALE PIPE WELD
CONNECTOR**



NUT



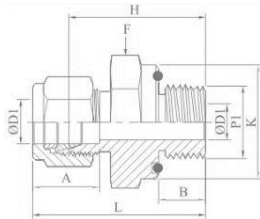
MALE CONNECTOR



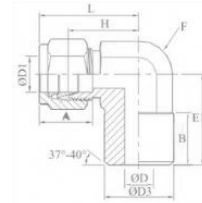
TUBE SOCKET WELD UNION



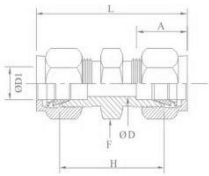
TUBE INSERT



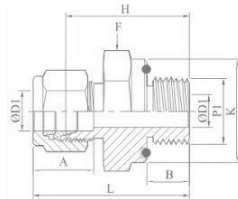
MALE CONNECTOR TUBE



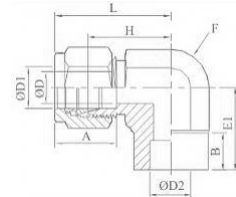
MALE PIPE WELD ELBOW



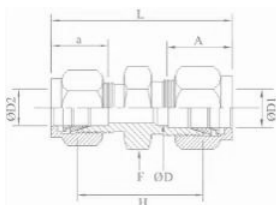
UNION



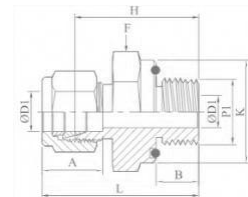
**MALE CONNECTOR TUBE
(METRIC)**



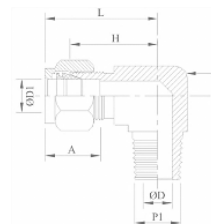
TUBE SOCKET WELD ELBOW



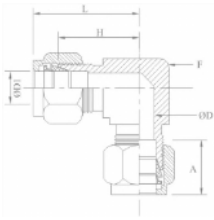
REDUCING UNION



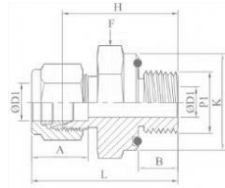
MALE CONNECTOR



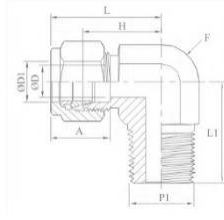
MALE ELBOW



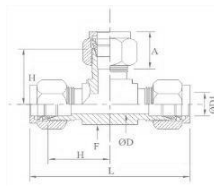
UNION ELBOW



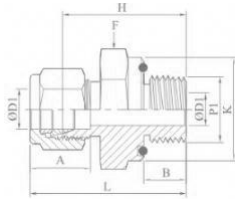
MALE CONNECTOR SAE/MS



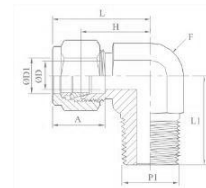
MALE ELBOW



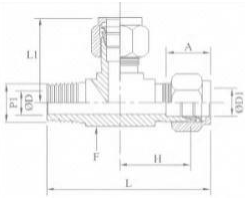
UNION TEE



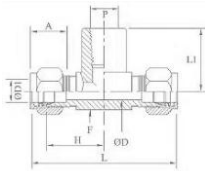
MALE CONNECTOR OS SEAL NPT



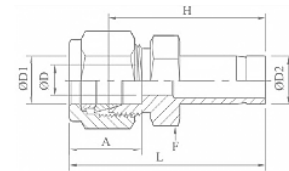
MALE ELBOW



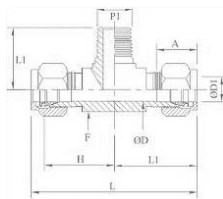
MALE ELBOW TUBE (METRIC)



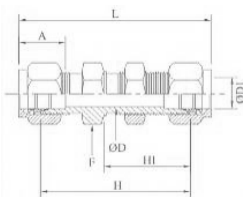
FEMALE BRANCH TEE



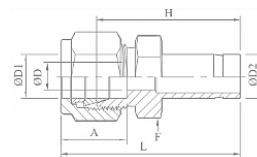
REDUCER TUBE



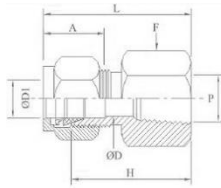
MALE BRANCH TEE



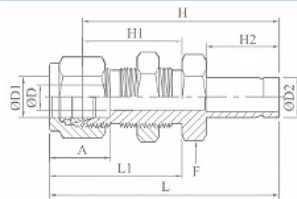
BULKHEAD UNION



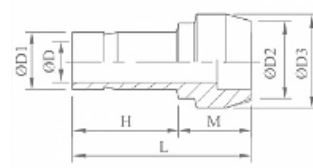
REDUCER TUBE (METRIC)



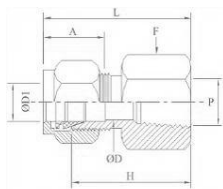
FEMALE CONNECTOR



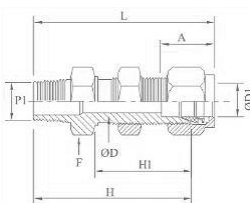
BULKHEAD REDUCER TUBE



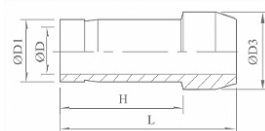
REDUCING PORT CONNECTOR



FEMALE CONNECTOR



BULKHEAD MALE CONNECTOR



PORT CONNECTOR



<p>FEMALE CONNECTOR TUBE TO FEMALE</p>	<p>BULKHEAD FEMALE CONNECTOR</p>	<p>HOSE TO PORT CONNECTOR</p>
<p>FEMALE CONNECTOR TUBE TO FEMALE</p>	<p>CAP-CAPPING END OF TUBE</p>	<p>TUBE TO AN ADAPTOR</p>
<p>FEMALE ELBOW</p>	<p>PLUG- PLUGGING</p>	<p>TUBE TO AN UNION</p>
<p>FEMALE RUN TEE</p>	<p>REDUCER TUBE (INCH) TO STUB (INCH)</p>	<p>TUBE TO BULKHEAD UNION</p>

Dimensions are for reference only and subject to change without notice.

Warning for Your Safety

The system designer and user have the sole responsibility to select products suitable for their special application requirements to ensure the proper installation. Operation and maintenance of the product. Application details, material compatibility and product ratings should all be considered in the individual selection. Improper selection or use of products can cause property damage or personal injury. METALOK accepts no liability for any improper selection, installation, operation or maintenance.



Our Total customer satisfaction results in A True Partnership.



CUSTOMER BASE

More than three decades of experience, expertise and dedication ensures world class quality and excellent performance of METALOK products resulted in establishing worldwide customer base.

GRATITUDE

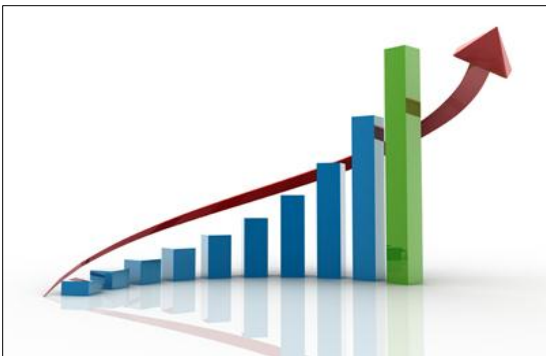
We at METALOK always appreciated and thankful to all our Valued Customers for undaunted support and faith reposed on us which motivates us to perform better all the time

EDGE

Our in-house Design, manufacturing and Testing facilities only emphasizes that METALOK Fitting and Valves are one of the Best, versatile, safe, compatible, easy for installation and operation in Instrumentation, Hydraulic and Industrial applications.

OUR GOAL

Our company's vision is to understand our customers requirements and meet them fully to their entire satisfaction by way of high quality, timely delivery, competitive price and prompt service.



www.metalokindustries.com



METALOK INDUSTRIES
(AN ISO 9001: 2008 Certified Company)

Regd Office & Unit : G-16 & 21, Nikisha Industrial Estate , Near Pandurang wadi, Western Express Highway, Mira Road East, Thane 401 107.



+91 22 28453235
+91 9869552950 (Hassan Shaikh)
+91 9892277161 (Rehan Shaikh)



metalokindustries@gmail.com
sales@metalokindustries.com
metalok@live.com



www.metalokindustries.com

METALOK INDUSTRIES

sales@metalokindustries.com



M
E
T
A
L
O
K

I
N
D
U
S
T
R
I
E
S